

for sale

shared ownership **£120,000**



## Plot 340 Kidnappers Lane Cheltenham GL53 0JH

Discover your opportunity to step onto the property ladder with a range of beautifully designed 2 and 3-bedroom houses and coach houses at the stunning new development of Greenway Chase in Leckhampton, Cheltenham - available now through shared ownership starting at just 40% share.



# Plot 340 Kidnappers Lane Cheltenham GL53 0JH

## Agent Note:

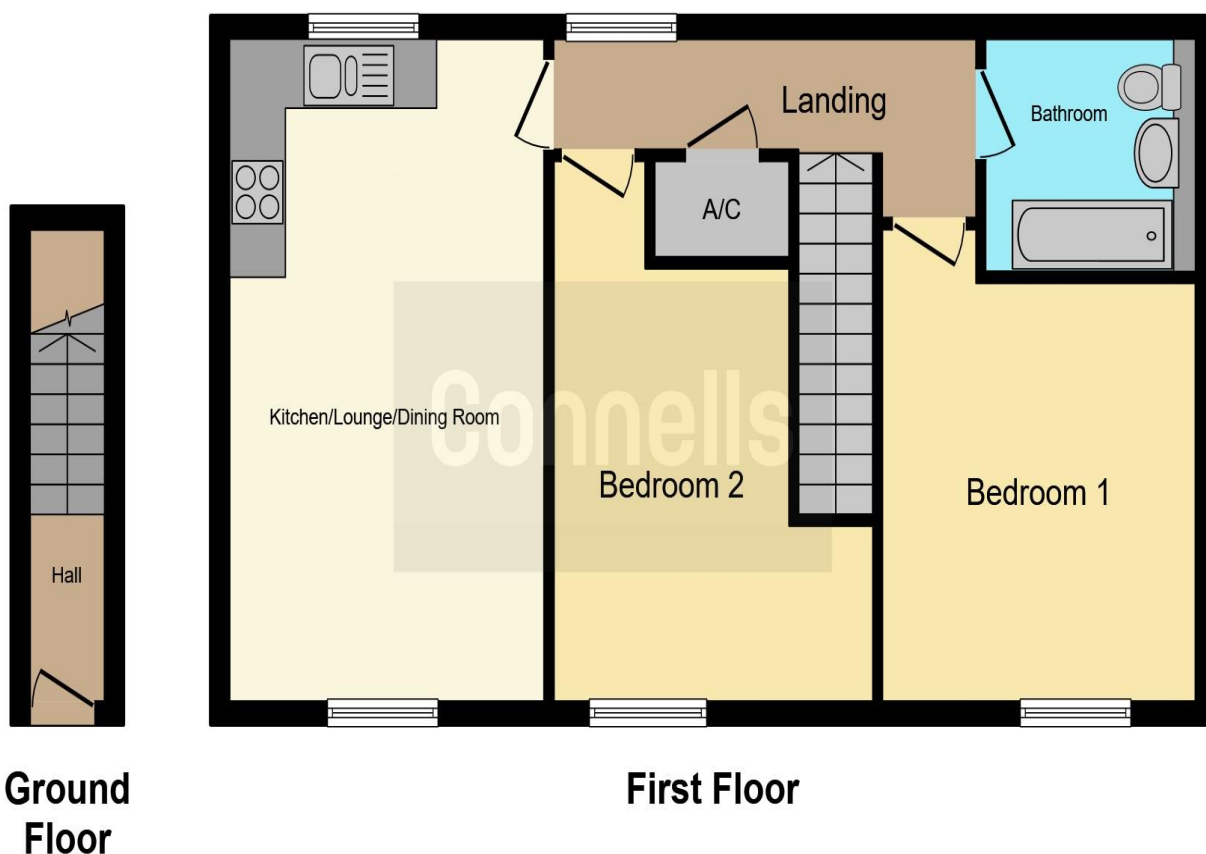
External details or finishes may vary on individual plots and homes may be built in either detached or attached styles depending on the development layout. Exact specification, window styles and whether a property is left or right handed may differ from plot to plot. Dimensions shown in any text or plan are approximate sizes only and actual sizes may be different once constructed. Purchasing a 40% share.











This floor plan is for illustrative purposes only. It is not drawn to scale. Any measurements, floor areas (including any total floor area), openings and orientation are approximate. No details are guaranteed, they cannot be relied upon for any purpose and they do not form part of any agreement. No liability is taken for any error, omission or misstatement. A party must rely upon its own inspection(s). Powered by [www.focalagent.com](http://www.focalagent.com)

To view this property please contact Connells on

**T 01793 708050**  
**E [swindonnorth@connells.co.uk](mailto:swindonnorth@connells.co.uk)**

Unit B11 North Swindon District Centre Thamesdown Drive  
 SWINDON SN25 4AN

Property Ref: SDN313915 - 0002

Tenure:Leasehold EPC Rating: Exempt

Service Charge: Ask Agent

Ground Rent: Ask Agent

**view this property online [connells.co.uk/Property/SDN313915](http://connells.co.uk/Property/SDN313915)**

This is a Leasehold property. We are awaiting further details about the Term of the lease. For further information please contact the branch. Please note additional fees could be incurred for items such as Leasehold packs.

1. MONEY LAUNDERING REGULATIONS Intending purchasers will be asked to produce identification documentation at a later stage and we would ask for your co-operation in order that there will be no delay in agreeing the sale. 2. These particulars do not constitute part or all of an offer or contract. 3. The measurements indicated are supplied for guidance only and as such must be considered incorrect. Potential buyers are advised to recheck measurements before committing to any expense. 4. We have not tested any apparatus, equipment, fixtures, fittings or services and it is in the buyers interest to check the working condition of any appliances.

Connells Residential is registered in England and Wales under company number 1489613, Registered Office is Cumbria House, 16-20 Hockliffe Street, Leighton Buzzard, Bedfordshire, LU7 1GN. VAT Registration Number is 500 2481 05.

see all our properties at [www.connells.co.uk](http://www.connells.co.uk) | [www.rightmove.co.uk](http://www.rightmove.co.uk) | [www.zoopla.co.uk](http://www.zoopla.co.uk)