

for sale

£425,000



Belmont Close Swindon SN3 4QN

Nestled in a quiet and sought-after CUL-DE-SAC in STRATTON ST MARGARET'S this well-presented THREE BEDROOM DETACHED BUNGALOW. Externally the property has DOUBLE DRIVEWAY AND DOUBLE GARAGE.



Belmont Close Swindon SN3 4QN

Accommodation Details

Entrance Porch

Double glazed door to the front aspect. Double glazed window to the side aspect. Door to the entrance hall.

Entrance Hall

Door to all rooms. Single glazed door to the entrance hall. Loft access. Radiator.

Lounge

17' 11" x 12' 11" (5.46m x 3.94m)

Double glazed window to the front and side aspect. Wood burner/ Television point. Telephone point. Two radiators.

Kitchen

13' 6" x 11' 7" (4.11m x 3.53m)

Double glazed window to the side aspect. Door to the utility room. Fully fitted kitchen with a range of base and wall mounted units comprising of cupboard. One and a half sink with drainer and mixer tap. Breakfast bar. Space for cooker. Integrated boiler, fridge freezer and dishwasher. Tiled splash back to water sensitive areas.

Utility Room

6' 10" x 4' 1" (2.08m x 1.24m)

Double glazed window to the side aspect. Door to the garden. Space and plumbing for washing machine.



First Floor Accommodation

First Floor Landing

Bedroom One

13' 9" x 12' 11" (4.19m x 3.94m)

Double glazed window to the rear aspect. Fitted wardrobes and over head storage. Radiator.

Bedroom Two

12' x 10' 5" (3.66m x 3.17m)

Double glazed window to the rear aspect. Radiator.

Bedroom Three/Dining Room

12' 10" x 11' 4" (3.91m x 3.45m)

Double glazed window to the front aspect. Radiator.

Bathroom

Two obscure double glazed window to the side aspect. Three piece suite comprising of Low Level WC, wash hand basin with vanity, panelled bath and separate shower. Linen cupboard. Radiator.

External Features

Garden

Fenced boundaries. Laid to patio and lawn. Mature bushes and shrubs. Shed.

Parking

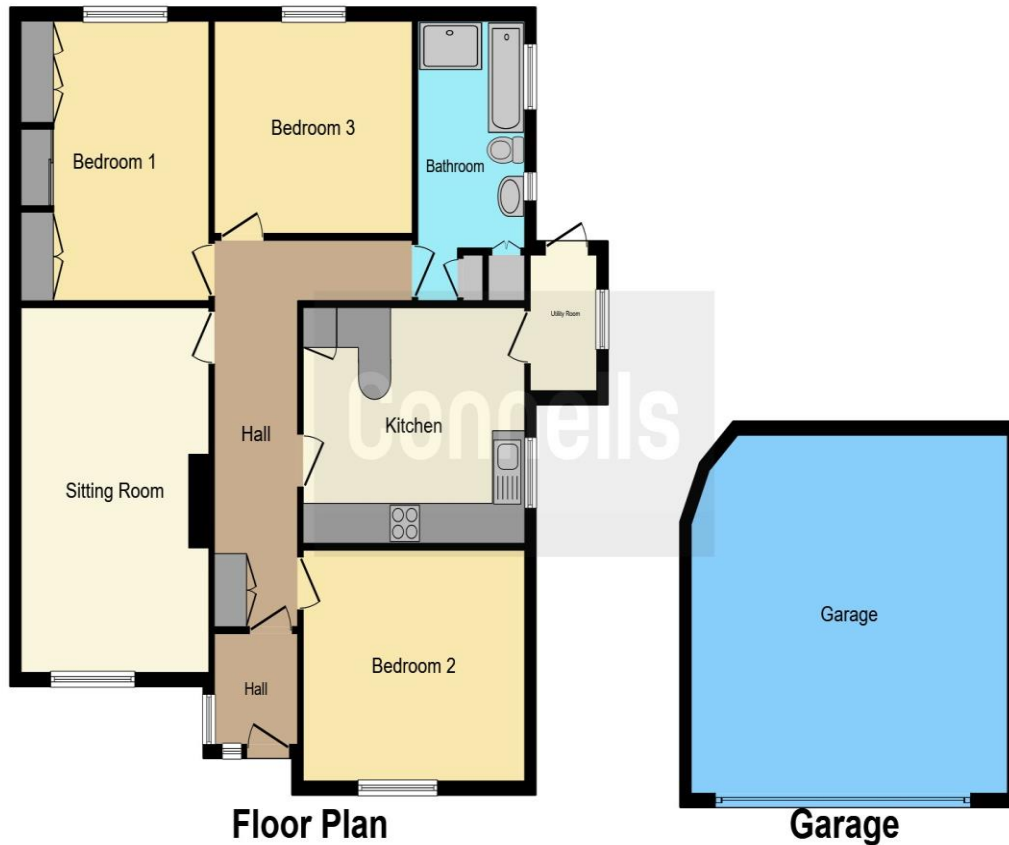
Driveway parking

Garage

17' 8" x 19' 2" (5.38m x 5.84m)

Up and over door.





This floor plan is for illustrative purposes only. It is not drawn to scale. Any measurements, floor areas (including any total floor area), openings and orientation are approximate. No details are guaranteed, they cannot be relied upon for any purpose and they do not form part of any agreement. No liability is taken for any error, omission or misstatement. A party must rely upon its own inspection(s). Powered by www.focalagent.com

To view this property please contact Connells on

T 01793 708050
E swindonnorth@connells.co.uk

Unit B11 North Swindon District Centre Thamesdown Drive
 SWINDON SN25 4AN

Property Ref: SDN313875 - 0002

Tenure: Freehold EPC Rating: D

Council Tax Band: D

view this property online connells.co.uk/Property/SDN313875



1. MONEY LAUNDERING REGULATIONS Intending purchasers will be asked to produce identification documentation at a later stage and we would ask for your co-operation in order that there will be no delay in agreeing the sale. 2. These particulars do not constitute part or all of an offer or contract. 3. The measurements indicated are supplied for guidance only and as such must be considered incorrect. Potential buyers are advised to recheck measurements before committing to any expense. 4. We have not tested any apparatus, equipment, fixtures, fittings or services and it is in the buyers interest to check the working condition of any appliances.

Connells Residential is registered in England and Wales under company number 1489613, Registered Office is Cumbria House, 16-20 Hockliffe Street, Leighton Buzzard, Bedfordshire, LU7 1GN. VAT Registration Number is 500 2481 05.

see all our properties at www.connells.co.uk | www.rightmove.co.uk | www.zoopla.co.uk