

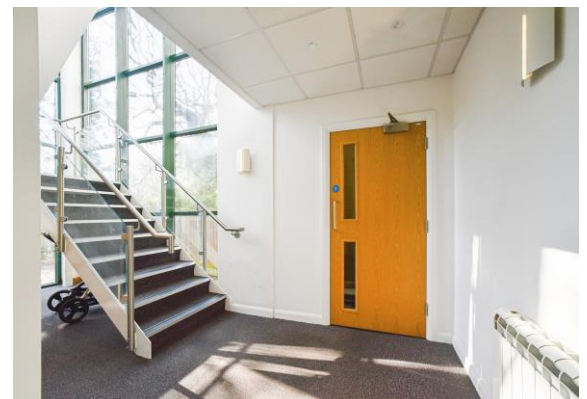
for sale

offers in excess of **£120,000**



Dauntsey House Bentham Close Westlea Swindon SN5 7FR

NO ONWARD CHAIN! This **ONE BEDROOM GROUND FLOOR FLAT** is the perfect choice for someone looking to secure a modern home in a desirable location. **ALLOCATED PARKING** with the property. Communal garden with gated access. Located in **WESTLEA WEST SWINDON**



Dauntsey House Bentham Close Westlea Swindon SN5 7FR

Accommodation Details

Lounge

17' 4" x 11' 11" (5.28m x 3.63m)

Double glazed window to the side aspect. Storage Heater

Kitchen

10' 1" x 9' 6" (3.07m x 2.90m)

Storage Heater. Fully fitted kitchen with a range of wall and base units comprising of cupboards and drawers. Induction hob with electric oven and extractor over. Integrated Fridge. Dual Stainless Steel Sink

Bedroom One

12' 11" x 12' 10" (3.94m x 3.91m)

Double glazed window to the side aspect. Storage. Radiator.

Bathroom

Three piece suite comprising of panelled bath with shower and screen over. W/C and Wash Hand Basin. Radiator.

External Features

Rear Garden

Mainly laid to lawn. Low fenced borders. gated access.

Parking

Allocated Parking Space







This floor plan is for illustrative purposes only. It is not drawn to scale. Any measurements, floor areas (including any total floor area), openings and orientation are approximate. No details are guaranteed, they cannot be relied upon for any purpose and they do not form part of any agreement. No liability is taken for any error, omission or misstatement. A party must rely upon its own inspection(s). Powered by www.focalagent.com

To view this property please contact Connells on

T 01793 708050
E swindonnorth@connells.co.uk

Unit B11 North Swindon District Centre Thamesdown Drive
 SWINDON SN25 4AN

Property Ref: SDN313553 - 0003

Tenure: Leasehold EPC Rating: D

Council Tax Band: A Service Charge: 1403.00

Ground Rent: 200.00

view this property online connells.co.uk/Property/SDN313553

This is a Leasehold property with details as follows; Term of Lease 999 years from 01 Jun 2013. Should you require further information please contact the branch. Please Note additional fees could be incurred for items such as Leasehold packs.

1. MONEY LAUNDERING REGULATIONS Intending purchasers will be asked to produce identification documentation at a later stage and we would ask for your co-operation in order that there will be no delay in agreeing the sale. 2. These particulars do not constitute part or all of an offer or contract. 3. The measurements indicated are supplied for guidance only and as such must be considered incorrect. Potential buyers are advised to recheck measurements before committing to any expense. 4. We have not tested any apparatus, equipment, fixtures, fittings or services and it is in the buyers interest to check the working condition of any appliances.

Connells Residential is registered in England and Wales under company number 1489613, Registered Office is Cumbria House, 16-20 Hockliffe Street, Leighton Buzzard, Bedfordshire, LU7 1GN. VAT Registration Number is 500 2481 05.



see all our properties at www.connells.co.uk | www.rightmove.co.uk | www.zoopla.co.uk