

for sale

£365,000



## Saxon Mill Purton Swindon SN5 4FT

**NO ONWARD CHAIN** This wonderful **FOUR BEDROOM** family home situated on a cul-de-sac in the Ridgeway farm development in **PURTON SWINDON**. The property has **GARAGE AND DRIVEWAY PARKING**

# Saxon Mill Purton Swindon SN5 4FT

## Accommodation Details

### Entrance Hall

Access to kitchen/diner, cloakroom and lounge. Under stair storage cupboard. Radiator

### Kitchen/Diner

14' 1" x 11' 10" ( 4.29m x 3.61m )

Double glazed window to the front aspect. Fully fitted kitchen with a range of base and wall mounted units comprising of cupboards and drawers. Integral appliances including fridge freezer, oven, gas hob, cooler hood and dishwasher. Boiler. One and a half sink with drainer and mixer tap. Partially tiled to water sensitive areas. Space for washing machine. Splash back. Radiator.

### Cloakroom

Two piece suite comprising of Low Level WC and pedestal wash hand basin. Heated towel rail. Partially tiled to water sensitive areas.

## Lounge

18' 9" x 12' ( 5.71m x 3.66m )

Double glazed French door leading to the rear garden. Storage cupboard. Radiator.

## First Floor Accommodation

### First Floor Landing

Access to all bedrooms and family bathroom

### Bedroom One

11' 10" x 10' 9" ( 3.61m x 3.28m )

Double glazed window to the front aspect. Access to ensuite. Built in storage. Radiator.

### Ensuite

Three piece suite comprising of Low Level WC, shower and wash hand basin. Heated towel rail.



## Bedroom Two

11' 6" x 9' 3" ( 3.51m x 2.82m )

Double glazed window to the rear aspect. Built in wardrobes. Radiator.

## Bedroom Three

8' 3" x 8' 1" ( 2.51m x 2.46m )

Double glazed window to the rear aspect.

## Bedroom Four

7' 9" x 7' 2" ( 2.36m x 2.18m )

Double glazed window to the front aspect.

## Bathroom

Fully tiled to all areas. Three piece suite comprising of Low Level WC, pedestal wash hand basin and panelled bath with shower over.

## External Features

### Garden

Fenced boundaries. Block paved low maintenance garden. Trees.

### Parking

Driveway parking

### Garage

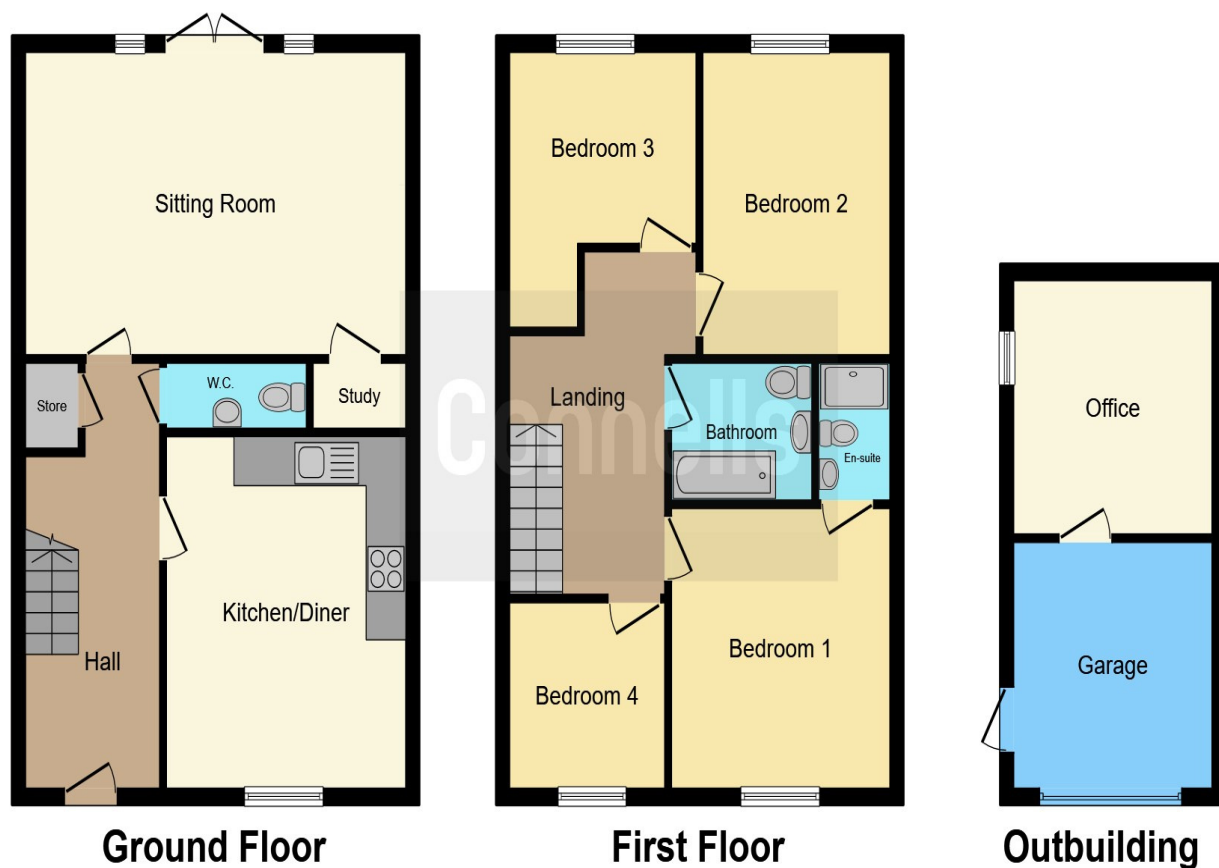
Up and over door











This floor plan is for illustrative purposes only. It is not drawn to scale. Any measurements, floor areas (including any total floor area), openings and orientation are approximate. No details are guaranteed, they cannot be relied upon for any purpose and they do not form part of any agreement. No liability is taken for any error, omission or misstatement. A party must rely upon its own inspection(s). Powered by [www.focalagent.com](http://www.focalagent.com)

To view this property please contact Connells on

**T 01793 708050**  
**E [swindonnorth@connells.co.uk](mailto:swindonnorth@connells.co.uk)**

Unit B11 North Swindon District Centre Thamesdown Drive  
 SWINDON SN25 4AN

Property Ref: SDN312778 - 0007

**Tenure:** Freehold

**EPC Rating:** C

**view this property online [connells.co.uk/Property/SDN312778](http://connells.co.uk/Property/SDN312778)**

1. MONEY LAUNDERING REGULATIONS Intending purchasers will be asked to produce identification documentation at a later stage and we would ask for your co-operation in order that there will be no delay in agreeing the sale. 2. These particulars do not constitute part or all of an offer or contract. 3. The measurements indicated are supplied for guidance only and as such must be considered incorrect. Potential buyers are advised to recheck measurements before committing to any expense. 4. We have not tested any apparatus, equipment, fixtures, fittings or services and it is in the buyers interest to check the working condition of any appliances.

Connells Residential is registered in England and Wales under company number 1489613, Registered Office is Cumbria House, 16-20 Hockliffe Street, Leighton Buzzard, Bedfordshire, LU7 1GN. VAT Registration Number is 500 2481 05.

see all our properties at [www.connells.co.uk](http://www.connells.co.uk) | [www.rightmove.co.uk](http://www.rightmove.co.uk) | [www.zoopla.co.uk](http://www.zoopla.co.uk)