

for sale

£245,000



The Beech Oakfield Swindon SN3 3HQ

EPC A ENERGY EFFICIENT HOME. Oakfield has something for everyone. Whether you're just starting out, need a bit of space for your growing family, want a roof terrace to relax and soak up the sun or you after some lovely outdoor space, you'll find it here!

The Beech Oakfield Swindon SN3 3HQ

Internal Features

Ground Floor Accommodation

Entrance Hall

High quality NorDan front door providing immediate access to the stairs rising to the first floor accommodation and storage cupboard, with access to the open plan area on the ground floor.

Open Plan Kitchen/ Dining Area

14' 10" x 10' (4.52m x 3.05m)

Kitchen / Dining Room

High quality Scandinavian Velfac double glazed composite window to the front aspect. Beautifully presented fully fitted kitchen built with a range of base and wall mounted units comprising of cupboards and drawers. Ample storage. Fitted with modern appliances inclusive of Induction Hob and Integrated Fridge/Freezer unit, Washing Machine and Dishwasher. Cooker-hood located above the hob. Tiling to all water sensitive areas.

Open Plan Living Area

13' 4" x 9' 2" (4.06m x 2.79m)

Lounge Area

Lounge Area

Cloakroom

Cloakroom

First Floor Accommodation

First Floor Landing

Bedroom One

13' 3" x 10' 9" (4.04m x 3.28m)

Bedroom Two

13' 3" x 9' 10" (4.04m x 3.00m)

Bathroom

Three piece suite comprising of bath with mixer taps, Low Level W/C and wash hand basin. Tiling to all water sensitive areas.

External Features

Outside

Enclosed by wooden panel fencing. Small patio area. Mainly laid to lawn. Cycle Store.

Agent Note:

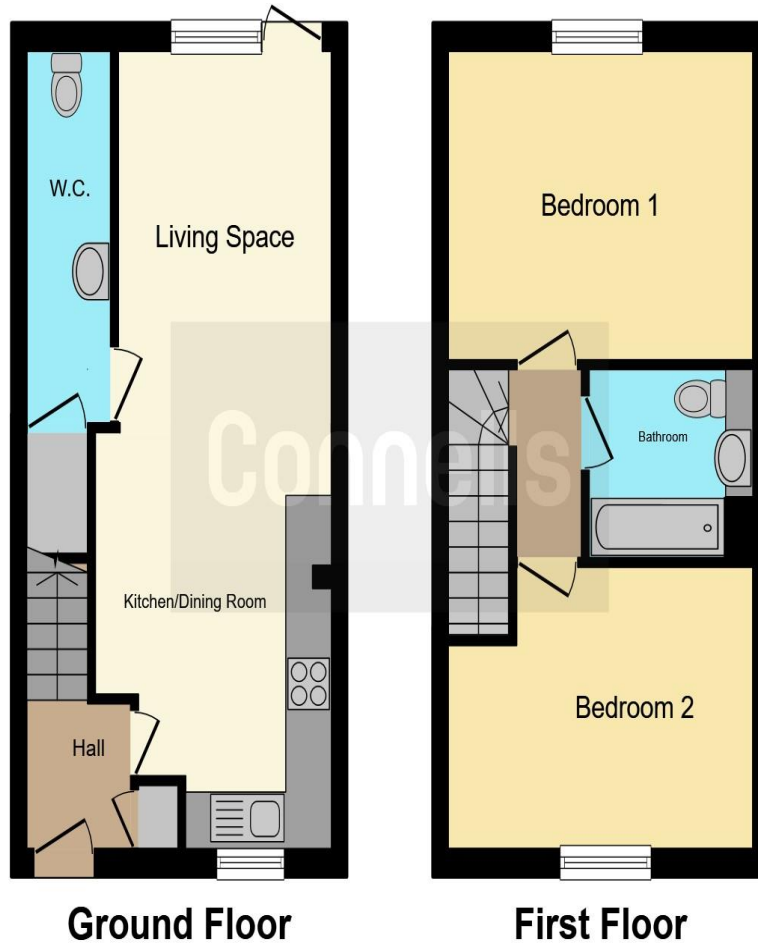
Subject to availability we have two versions of this wonderful properties which has been listed above.

External details or finishes may vary on individual plots and homes may be built in attached styles depending on the development layout. Exact specification, window styles and whether a property is left or right handed may differ from plot to plot. Dimensions shown in any text or plan are approximate sizes only and actual sizes may be different once constructed.









This floorplan is for illustrative purposes only and is not drawn to scale. Measurements, floor-areas, openings and orientations are approximate. They should not be relied upon for any purpose and do not form any part of an agreement. No liability is taken for any error or mis-statement. All parties must rely on their own inspections.

To view this property please contact Connells on

T 01793 708050
E swindonnorth@connells.co.uk

Unit B11 North Swindon District Centre Thamesdown Drive
 SWINDON SN25 4AN

Property Ref: SDN312743 - 0002

Tenure: Freehold

EPC Rating: Exempt

view this property online connells.co.uk/Property/SDN312743

1. MONEY LAUNDERING REGULATIONS Intending purchasers will be asked to produce identification documentation at a later stage and we would ask for your co-operation in order that there will be no delay in agreeing the sale. 2. These particulars do not constitute part or all of an offer or contract. 3. The measurements indicated are supplied for guidance only and as such must be considered incorrect. Potential buyers are advised to recheck measurements before committing to any expense. 4. We have not tested any apparatus, equipment, fixtures, fittings or services and it is in the buyers interest to check the working condition of any appliances.

Connells Residential is registered in England and Wales under company number 1489613, Registered Office is Cumbria House, 16-20 Hockliffe Street, Leighton Buzzard, Bedfordshire, LU7 1GN. VAT Registration Number is 500 2481 05.

see all our properties at www.connells.co.uk | www.rightmove.co.uk | www.zoopla.co.uk