







## Property Description

Our four bed homes have been designed over three floors with kitchen and dining area on the ground floor, living space on the first floor and even a roof terrace on the top floor. You'll also have an integral garage and driveway.

You'll be joining a neighbourhood with a real sense of community with beautifully designed homes and outdoor spaces. You'll be able to choose a home with a smaller private garden and access to a shared community garden, or a home with a larger garden.

Your home will be EPC A rated, and you'll have an air source heat pump instead of a gas boiler and solar panels on the roof to generate energy. We've also included integrated appliances, quality flooring, solid wood front doors and double glazing in all our homes, to name just a few of the features you'll love. All of our homes have been designed by architects, so you know you're getting something bespoke and well-designed.

## Ground Floor

### Kitchen / Dining

16' 11" max x 10' max ( 5.16m max x 3.05m max )

### Integral Garage

17' 6" x 9' 7" ( 5.33m x 2.92m )

## First Floor

### Living Room

16' 11" x 9' 2" ( 5.16m x 2.79m )

### Bedroom Two

12' x 7' 2" ( 3.66m x 2.18m )

### Bedroom Four

9' 7" x 8' 9" ( 2.92m x 2.67m )

### Bathroom

7' 2" x 6' 5" ( 2.18m x 1.96m )

## Second Floor

### Bedroom One

16' 11" x 9' 2" ( 5.16m x 2.79m )

## En Suite

8' 1" x 5' 7" ( 2.46m x 1.70m )

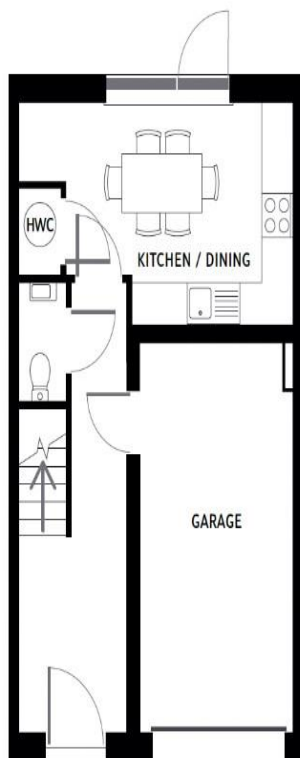
## Bedroom Three

12' 1" x 7' 3" ( 3.68m x 2.21m )

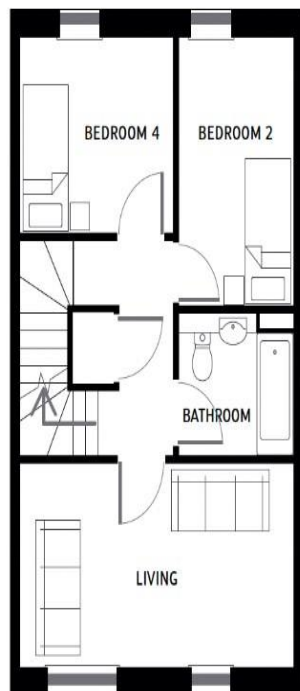
## Agent Note:

We've created these images/illustrations/map to give you a feel for what the development and homes will be like. Home layout may vary depending on plot number. We're sharing as much information as we can as a guide to Oakfield, but there may be things that change before the homes are completed. Any dimensions are just a guide and maps aren't to scale, plus the travel times and distances are estimates. This website doesn't form part of a contract of sale. If you'd like to know more, please ask our show home host or estate agent who'll be happy to talk it through.

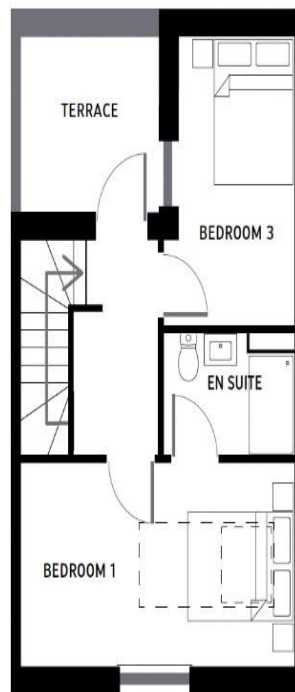




Ground floor



First floor



Second floor



To view this property please contact Connells on

**T 01793 708050**  
**E [swindonnorth@connells.co.uk](mailto:swindonnorth@connells.co.uk)**

Unit B11 North Swindon District Centre Thamesdown Drive  
 SWINDON SN25 4AN

**EPC Rating: Exempt**

**view this property online [connells.co.uk/Property/SDN312650](https://www.connells.co.uk/Property/SDN312650)**

Tenure: Freehold



1. MONEY LAUNDERING REGULATIONS Intending purchasers will be asked to produce identification documentation at a later stage and we would ask for your co-operation in order that there will be no delay in agreeing the sale. 2. These particulars do not constitute part or all of an offer or contract. 3. The measurements indicated are supplied for guidance only and as such must be considered incorrect. Potential buyers are advised to recheck measurements before committing to any expense. 4. We have not tested any apparatus, equipment, fixtures, fittings or services and it is in the buyers interest to check the working condition of any appliances.

Connells Residential is registered in England and Wales under company number 1489613, Registered Office is Cumbria House, 16-20 Hockliffe Street, Leighton Buzzard, Bedfordshire, LU7 1GN. VAT Registration Number is 500 2481 05.

**See all our properties at [www.connells.co.uk](https://www.connells.co.uk) | [www.rightmove.co.uk](https://www.rightmove.co.uk) | [www.zoopla.co.uk](https://www.zoopla.co.uk)**

Property Ref: SDN312650 - 0007