

for sale

£140,000



Vistula Crescent Swindon SN25 1QE

NO ONWARD CHAIN! TWO BEDROOM- FIRST FLOOR APARTMENT.
Located in the convenient location of Haydon End North Swindon.
Generously sized, light and airy OPEN PLAN LIVING ACCOMMODATION is perfect entertaining space. The property benefits from an ALLOCATED PARKING SPACE!

Vistula Crescent Swindon SN25 1QE

Accommodation Details

Entrance Hall

Double glazed window to the rear aspect. Doors leading to all rooms. Airing Cupboard. Storage Cupboard. Intercom security. Doors to the communal entrance.

Kitchen/lounge

21' x 12' MAX narrowing to 10' 5" (6.40m x 3.66m MAX narrowing to 3.17m)

Double glazed French doors with Juliette Balcony to the front aspect. Television point. Telephone point.

Fully fitted kitchen with a range of base and wall mounted units comprising of cupboards and drawers. Sink with drainer and mixer tap. Space and plumbing for washing machine and dishwasher. Space for Fridge Freezer. Integrated oven with four ring electric hob and cooker hood.

Bedroom One

10' 10" x 10' 1" (3.30m x 3.07m)

Double glazed window to the front aspect. Built in wardrobes. Television point. Telephone point. Electric heater.

Bedroom Two

10' 9" x 7' MAX narrowing to 6' 2" (3.28m x 2.13m MAX narrowing to 1.88m)

Double glazed window to the front aspect. Electric heater.

Bathroom

Obscure double glazed window to the rear aspect. Three piece suite comprising of paneled bath with mixer tap and shower over, wash hand basin with vanity and Low Level W/C. Shave point. Heated towel rail.

External Features

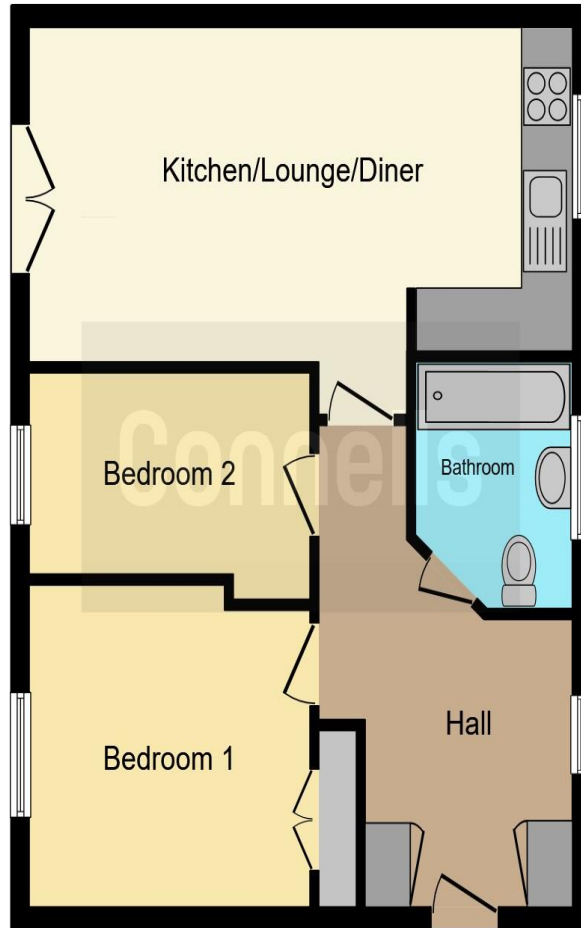
Parking

Allocated parking space. Visitors parking.









This floorplan is for illustrative purposes only and is not drawn to scale. Measurements, floor-areas, openings and orientations are approximate. They should not be relied upon for any purpose and do not form any part of an agreement. No liability is taken for any error or mis-statement. All parties must rely on their own inspections.

To view this property please contact Connells on

T 01793 708050
E swindonnorth@connells.co.uk

Unit B11 North Swindon District Centre Thamesdown Drive
SWINDON SN25 4AN

Property Ref: SDN312111 - 0004

Tenure: Leasehold

EPC Rating: C

view this property online connells.co.uk/Property/SDN312111

This is a Leasehold property with details as follows; Term of Lease 125 years from 01 Jan 2006. Should you require further information please contact the branch. Please Note additional fees could be incurred for items such as Leasehold packs.

1. MONEY LAUNDERING REGULATIONS Intending purchasers will be asked to produce identification documentation at a later stage and we would ask for your co-operation in order that there will be no delay in agreeing the sale. 2. These particulars do not constitute part or all of an offer or contract. 3. The measurements indicated are supplied for guidance only and as such must be considered incorrect. Potential buyers are advised to recheck measurements before committing to any expense. 4. We have not tested any apparatus, equipment, fixtures, fittings or services and it is in the buyers interest to check the working condition of any appliances.

Connells Residential is registered in England and Wales under company number 1489613, Registered Office is Cumbria House, 16-20 Hockliffe Street, Leighton Buzzard, Bedfordshire, LU7 1GN. VAT Registration Number is 500 2481 05.

see all our properties at www.connells.co.uk | www.rightmove.co.uk | www.zoopla.co.uk