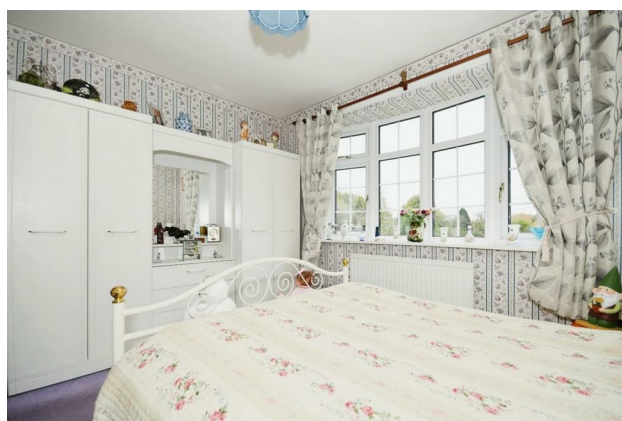


HUNTERS®

HERE TO GET *you* THERE

**Woodthorpe View Top Road, Hardwick Wood, Wingerworth,
Chesterfield, S42 6RQ**

Guide Price £630,000



HUNTERS®

HERE TO GET *you* THERE

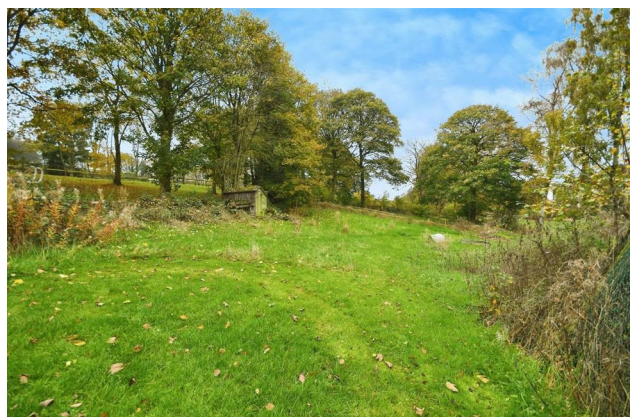
Property Images

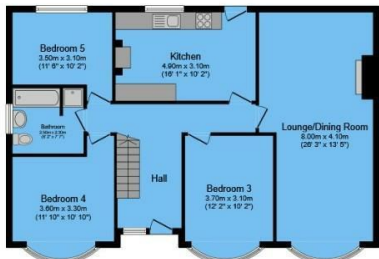


HUNTERS[®]

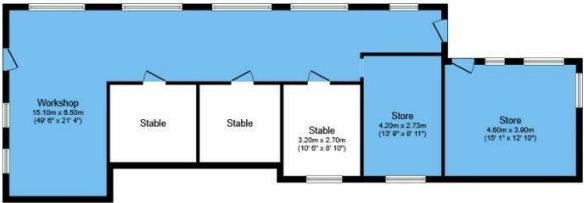
HERE TO GET *you* THERE

Property Images

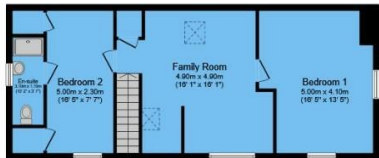




Ground Floor



Outbuilding

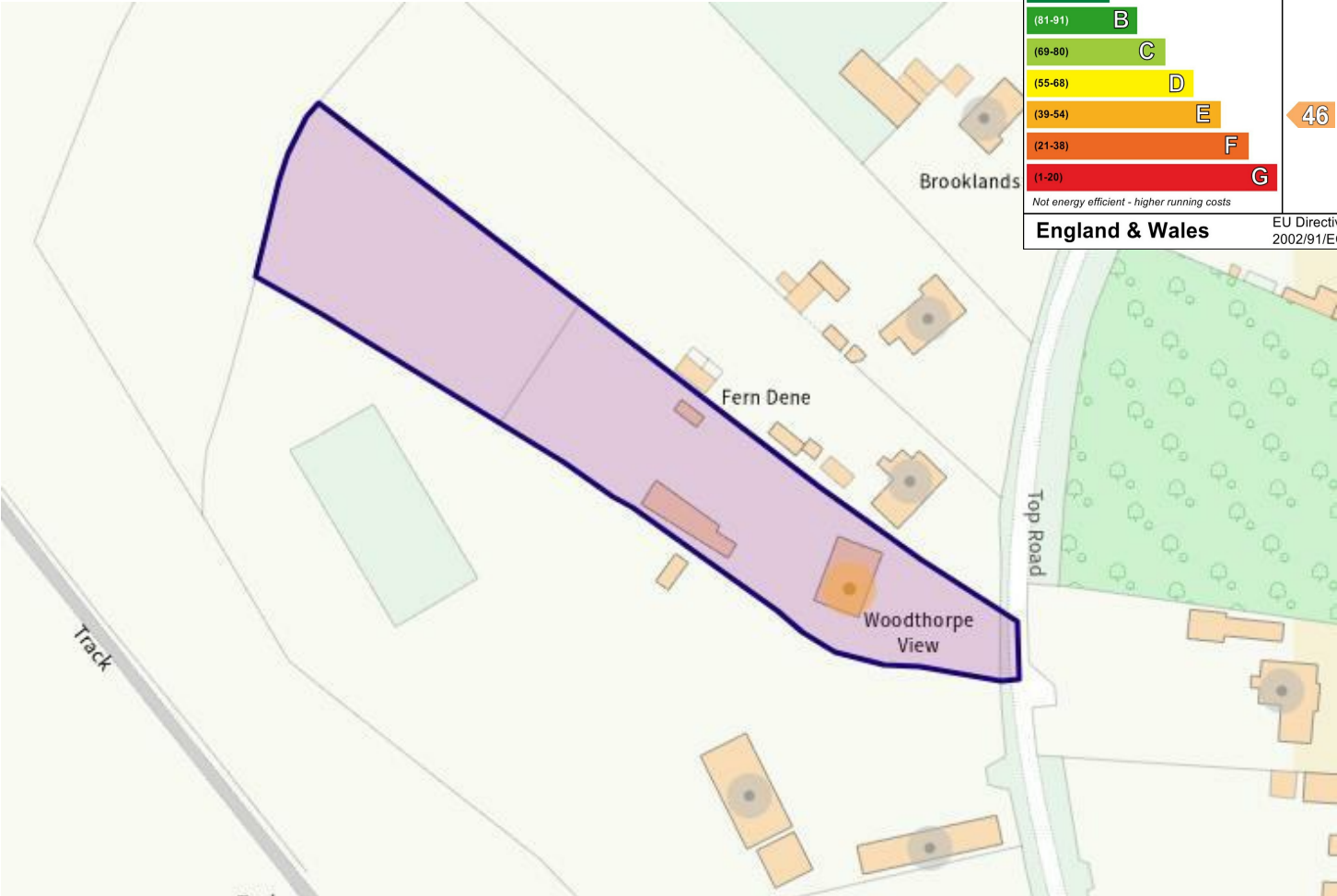


First Floor

Total floor area 244.5 m² (2,632 sq.ft.) approx

This floor plan is for illustrative purposes only. It is not drawn to scale. Any measurements, floor areas (including any total floor area), openings and orientation are approximate. No details are guaranteed, they cannot be relied upon for any purpose and they do not form part of any agreement. No liability is taken for any error, omission or misstatement. A party must rely upon its own inspection(s).
Powered by www.focalagent.com

Energy Efficiency Rating		
	Current	Potential
Very energy efficient - lower running costs		
(92 plus) A		
(81-91) B		
(69-80) C		
(55-68) D		
(39-54) E		
(21-38) F		
(1-20) G		
Not energy efficient - higher running costs		
England & Wales		
		EU Directive 2002/91/EC



Welcome to Woodthorpe View, a charming family home nestled on a small holding with a 1.2-acre plot of private woodland in the highly sought-after location of Hardwick Wood, Wingerworth. This unique property offers a rare opportunity for those looking to create their dream home in a tranquil setting, surrounded by nature.

As you approach the property, you'll be captivated by the serene landscape and mature trees that provide both privacy and a picturesque backdrop. The home itself boasts a spacious layout, perfect for family living, with multiple reception areas that can be customized to suit your lifestyle. Large windows invite natural light and offer beautiful views of the woodland surroundings.

While Woodthorpe View requires some upgrading, it presents an exciting canvas for renovation, allowing you to personalize every detail. Imagine modernizing the kitchen, enhancing the living spaces, and creating a stunning outdoor entertaining area amidst the lush greenery.

Located in a desirable area, this property is conveniently close to local amenities, schools, and recreational facilities, making it an ideal choice for families. Enjoy peaceful walks through the woodland or explore the nearby parks and nature reserves.

Offering 2,632 square feet of accommodation, this property comprises:- entrance hall, fitted kitchen, lounge / diner, three ground floor bedrooms & ground floor, four piece, family bathroom.

On the first floor is the open family room with both first floor bedrooms off (one with en-suite shower room).

Don't miss this opportunity to own a slice of paradise in Hardwick Wood. With its expansive grounds, charming character, and potential for transformation, Woodthorpe View is a rare find.

PROPERTY INFO

Contact us today to arrange a viewing and discover the endless possibilities this home has to offer!

Solid fuel heating - double glazed - septic tank.

FREEHOLD - COUNCIL TAX BAND E

VIEWINGS BY APPOINTMENT ONLY - CALL HUNTERS - PHONES ANSWER

DISCLOSURE

ADVERT & DESCRIPTION DISCLAIMER

- 1.2 ACRE PLOT • IN NEED OF MODERNISATION • PRIVATE GARDENS • FIVE BEDROOMS • FITTED KITCHEN DINER • OUTBUILDINGS AND STABLES • LOTS OF PARKING • CALL HUNTERS NOW



Unit 4, The Glass Yard Sheffield Road, Chesterfield, S41 8JY
Tel: 01246 540540 Email: Chesterfield@hunters.com <https://www.hunters.co>

