



23 Southdown Avenue, Loundsley Green, Chesterfield, S40 4QP

- NO UPWARD CHAIN
- 2 DOUBLE BEDROOMS
- ENCLOSED REAR GARDEN
 - DRIVEWAY PARKING
- WELL MAINTAINED PROPERTY
 - 2 SHOWER ROOMS
 - LARGE SHED WITH POWER
 - CALL HUNTERS NOW

Offers In The Region Of £200,000 - £210,000



Welcome to this NO CHAIN, TWO DOUBLE
BEDROOM SEMI DETACHED HOUSE.

WELL MAINTAINED AND WELL PRESENTED
PROPERTY THROUGHOUT!

Sought after residential area to the West of
Chesterfield - Loundsley Green, close to local
amenities & popular schools.

Downstairs, this property comprises of the entrance
porch, hallway, lounge, fitted breakfast kitchen, WC,
utility room, and a conservatory.

Going upstairs, there are two spacious double
bedrooms, and two three piece suite shower rooms.

Gas central heating and uPVC double glazed windows.

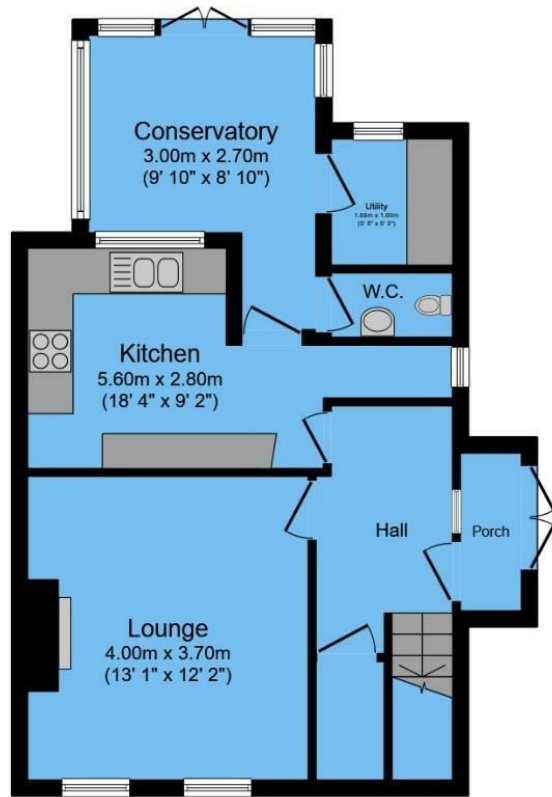
To the rear there is a good sized enclosed rear garden
with large shed (with power). Driveway parking to the
front.

Don't miss out on viewing this property, call Hunters to
book your viewing now!

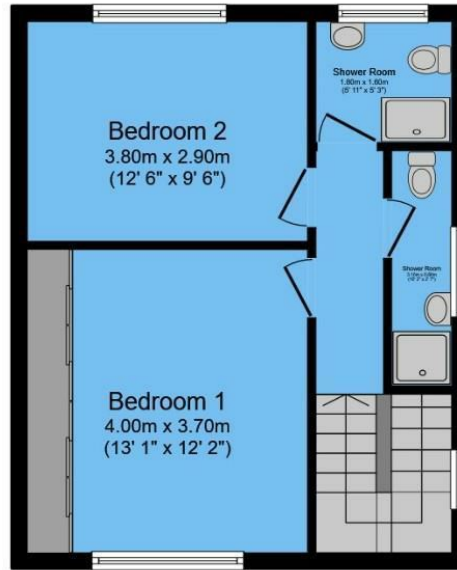
Freehold, Tax Band B, EPC Rating C.







Ground Floor



First Floor

ENERGY PERFORMANCE CERTIFICATE

The energy efficiency rating is a measure of the overall efficacy of a home. The higher the rating the more energy efficient the home is and the lower the fuel bills will be.

Energy Efficiency Rating		Current	Potential
Very energy efficient - lower running costs			
(92 plus) A			
(81-91) B			
(69-80) C		70	83
(55-68) D			
(39-54) E			
(21-38) F			
(1-20) G			
Not energy efficient - higher running costs			
England & Wales		EU Directive 2002/91/EC	

These particulars are intended to give a fair and reliable description of the property but no responsibility for any inaccuracy or error can be accepted and do not constitute an offer or contract. We have not tested any services or appliances (including central heating if fitted) referred to in these particulars and the purchasers are advised to satisfy themselves as to the working order and condition. If a property is unoccupied at any time there may be reconnection charges for any switched off/disconnected or drained services or appliances - All measurements are approximate.

THINKING OF SELLING? If you are thinking of selling your home or just curious to discover the value of your property, Hunters would be pleased to provide free, no obligation sales and marketing advice. Even if your home is outside the area covered by our local offices we can arrange a Market Appraisal through our national network of Hunters estate agents

Total floor area 91.3 sq.m. (982 sq.ft.) approx

This floor plan is for illustrative purposes only. It is not drawn to scale. Any measurements, floor areas (including any total floor area), openings and orientation are approximate. No details are guaranteed, they cannot be relied upon for any purpose and they do not form part of any agreement. No liability is taken for any error, omission or misstatement. A party must rely upon its own inspection(s).

Powered by www.focalagent.com

Viewing

Please contact our Hunters Chesterfield Office on 01246 540540 if you wish to arrange a viewing appointment for this property or require further information.



Unit 4, The Glass Yard Sheffield Road, Chesterfield, S41 8JY

Tel: 01246 540540 Email:

Chesterfield@hunters.com <https://www.hunters.com>