

TOWN & COUNTRY
ESTATES



24 Orchard Court, Trowbridge, Wiltshire, BA14 7AW

£800

LOCATION

Orchard Court is conveniently situated within easy reach of Trowbridge town centre, train station (with direct links to Bath, Bristol and beyond), Tesco Extra, bus routes and the modern cinema and restaurant development.

DESCRIPTION

A very well presented two bedroom first floor apartment, in a great location within walking distance to all of Trowbridge's amenities.

A communal entrance hall leads to the apartment, which offers an entrance hall, living room, kitchen, two bedrooms and bathroom.

Further benefits include gas central heating, Upvc double glazing and an allocated parking space.

ENTRANCE HALL

Upon entering the apartment from the communal entrance, there is a Upvc double glazed window to the rear, intercom handset, telephone point, a radiator and doors to the living room, both bedrooms and the bathroom.

LIVING ROOM

13'1" x 9'2"

The living room has a Upvc double glazed window to the front, radiator, tv point, a glazed door to the kitchen and space for a sofa and dining table.

KITCHEN

11'5" x 5'6"

There is a Upvc double glazed window to the rear, a range of matching base and wall units with rolled top worksurfaces, inset sink with chrome mixer tap, attractive brick effect tiled splash backs, electric cooker, plumbing for washing machine, space for under counter fridge and a wall mounted Baxi gas boiler.

BEDROOM ONE

11'1" x 8'6"

The double bedroom has a Upvc double glazed window to the front and a radiator.

BEDROOM TWO

11'1" x 6'2"

The good size single bedroom has a Upvc double glazed window to the front and a radiator.

BATHROOM

With an obscure Upvc double glazed window to the rear, a paneled bath with chrome mixer tap and wall mounted electric shower over. dual flush WC, pedestal basin, airing cupboard, tiled splash backs and radiator.

EXTERIOR

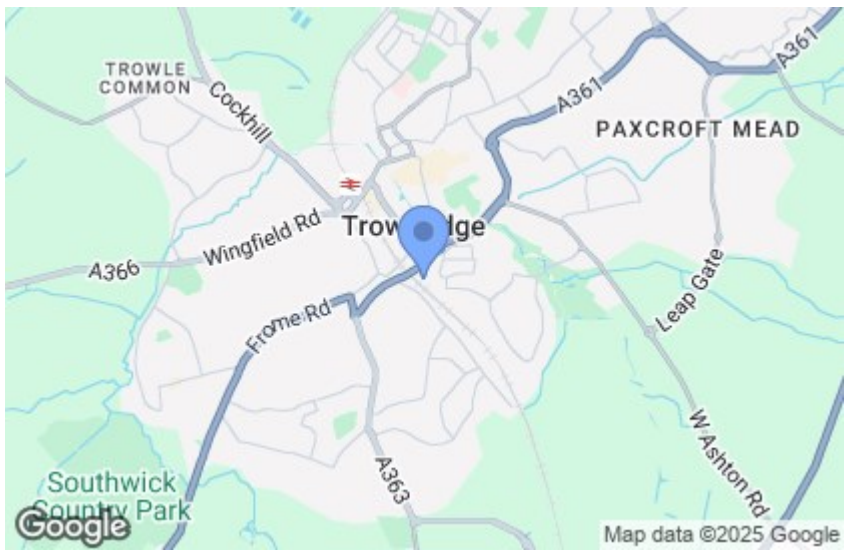
PARKING

There is an allocated parking space in a communal parking area to the rear of the property. The parking space is visible from the apartment.

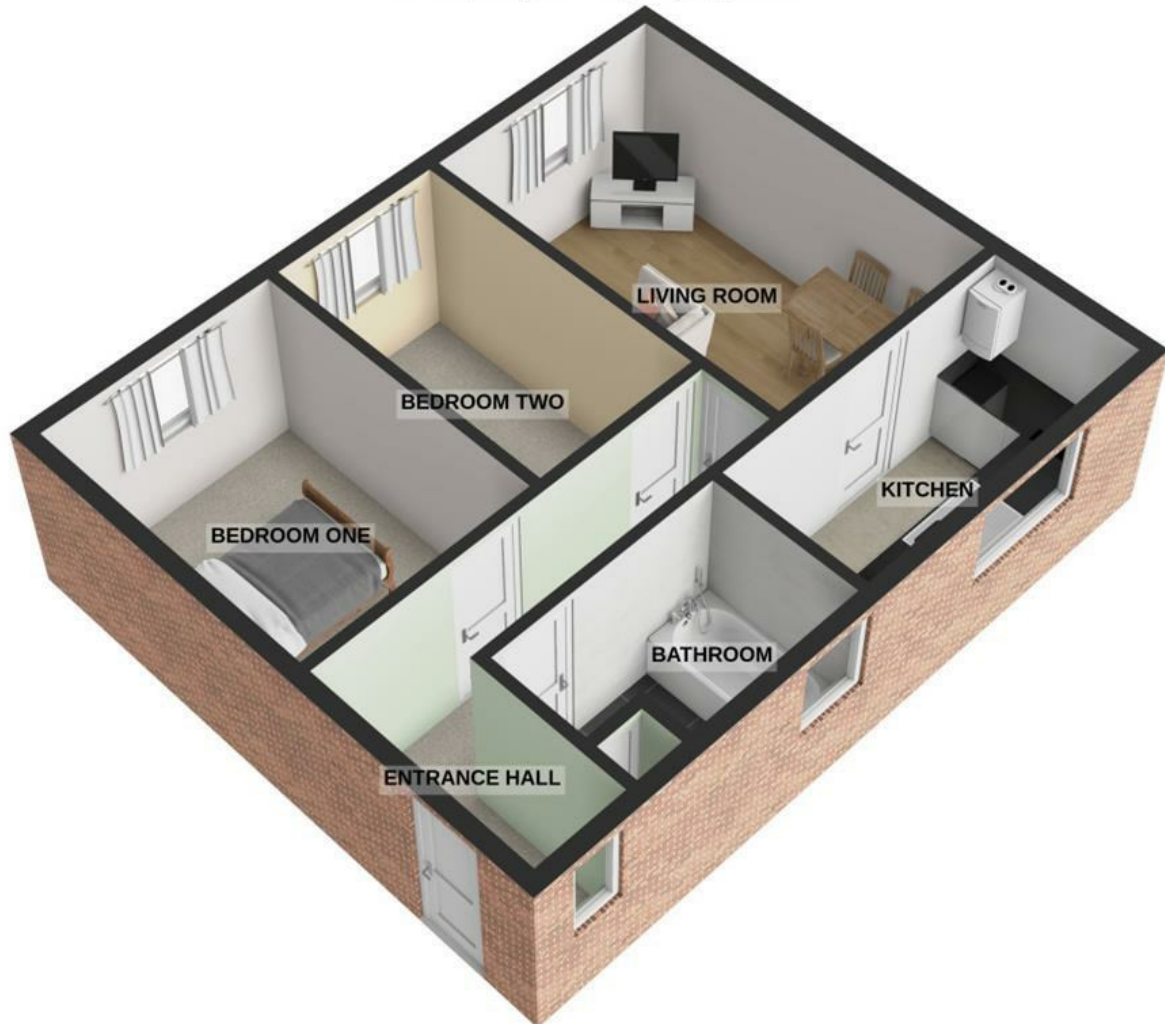
ADDITIONAL INFORMATION

Council Tax Band - A





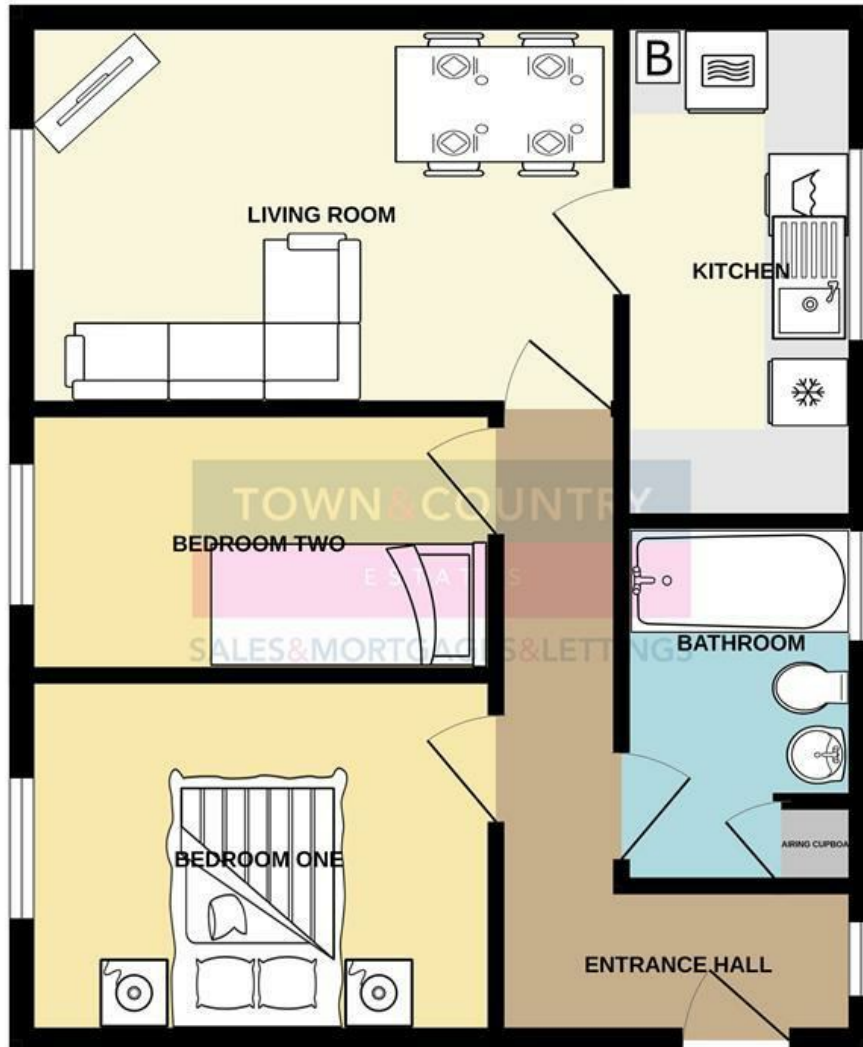
GROUND FLOOR
472 sq.ft. (43.9 sq.m.) approx.



TOTAL FLOOR AREA : 472 sq.ft. (43.9 sq.m.) approx.

For illustrative purposes only. Decorative finishes, fixtures, fittings and furnishings do not represent the current state of the property. Measurements are approximate. Not to scale.
Made with Metropix © 2024

GROUND FLOOR
472 sq.ft. (43.9 sq.m.) approx.



TOTAL FLOOR AREA : 472 sq.ft. (43.9 sq.m.) approx.

Whilst every attempt has been made to ensure the accuracy of the floorplan contained here, measurements of doors, windows, rooms and any other items are approximate and no responsibility is taken for any error, omission or mis-statement. This plan is for illustrative purposes only and should be used as such by any prospective purchaser. The services, systems and appliances shown have not been tested and no guarantee as to their operability or efficiency can be given.
Made with Metropix ©2024

TROWBRIDGE OFFICE
9 Fore Street, Trowbridge,
Wiltshire BA14 8HD

WESTBURY OFFICE
16 High Street, Westbury,
Wiltshire BA13 3BW

Teleph one: 01 225 7 766 99
Email: trowbridge@townandcountryestates.com

Telephone: 0 137 3 8244 44
Email: westbury@townandcountryestates.com

www.townandcountryestates.com

SALES & MORTGAGES & LETTINGS

TOWN & COUNTRY MORTGAGES

FEE FREE Mortgage Services

- RE-MORTGAGES
- FIRST TIME BUYER
- HOME MOVER
- BUY TO LET



YOUR PROPERTY MAY BE REPOSSESSED IF YOU DO NOT
KEEP UP REPAYMENTS ON YOUR MORTGAGE

OFFICE, HOME AND TELEPHONE
APPOINTMENTS AVAILABLE

CONTACT US ON:
01225 776699

BOOK ONLINE:
www.townandcountrymortgages.net

FIND US ON  

OLIVER BROWNING
Managing Director

NB. Town and Country Estates have not tested any equipment, fixtures, fittings or services and cannot guarantee that they are in working order. Buyers are advised to seek professional advice from their solicitors or surveyor. Internal measurements should not be relied upon for fitting of carpets or furniture without checking. These details have been prepared in good faith and whilst believed to be correct give notice that none of the statements are to be relied upon as statements or representations of fact. Some statements are inevitably subjective and are therefore the view of the author at the time the information was prepared. If any items are particularly important to you then please check with this office first, especially if travelling some distance to view.