

TOWN&COUNTRY
ESTATES



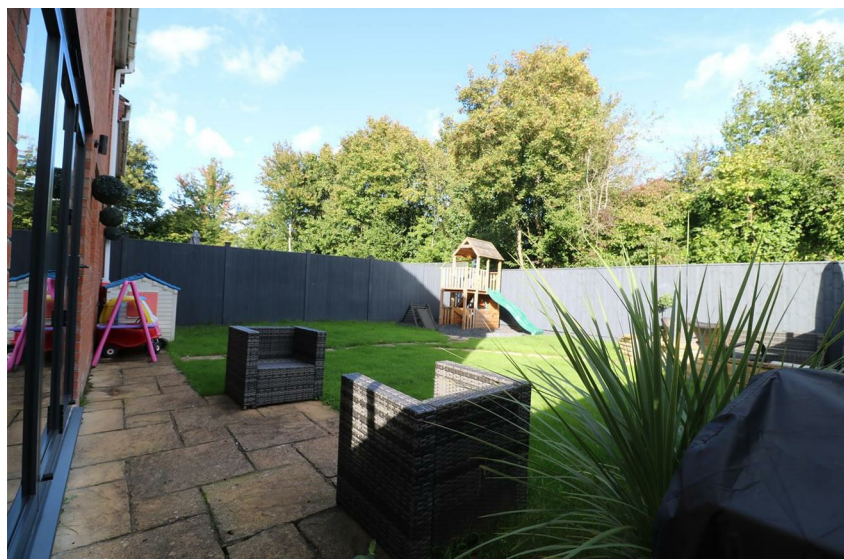
7 Cornbrash Rise, Paxcroft Mead,

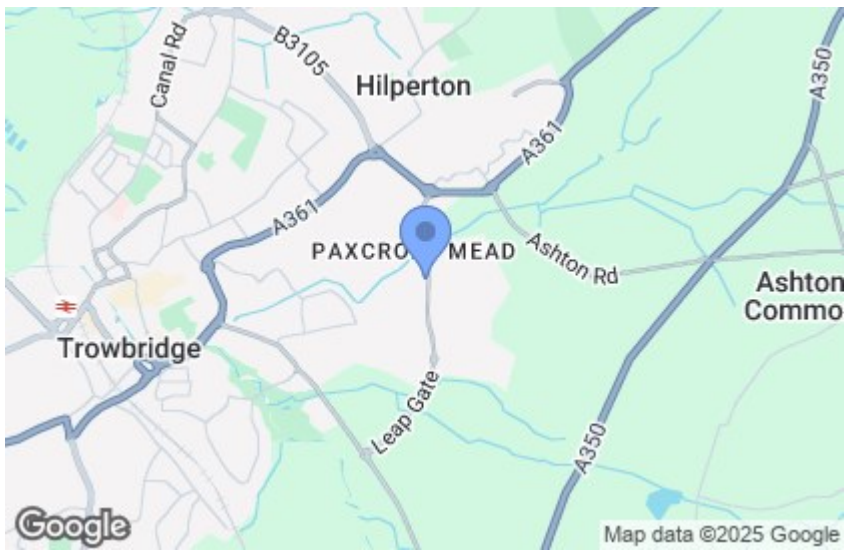
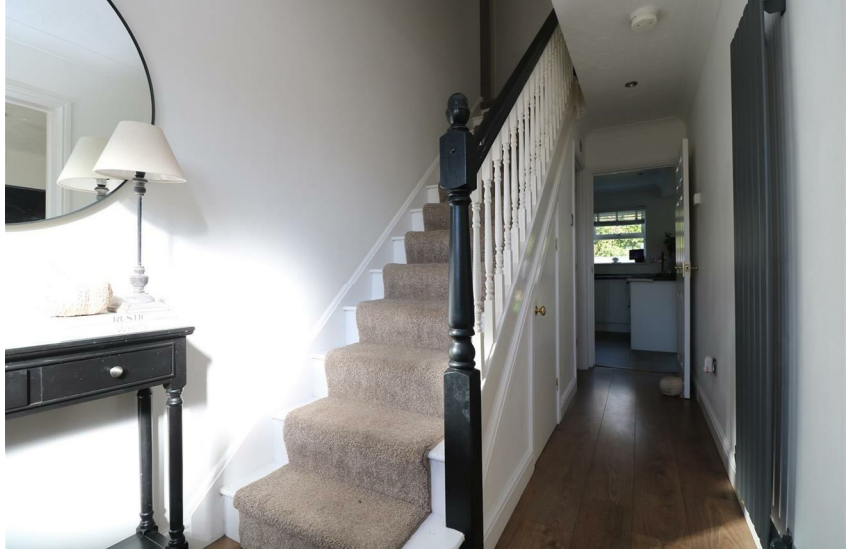
£400,000

DESCRIPTION

Situated on the edge of Trowbridge, the sought after Paxcroft Mead development is known for its well-maintained surroundings, amenities and easy access to Schools, transport links and local parks, makes it an ideal location for families. With close proximity to Trowbridge town centre, where you'll enjoy a range of shops, restaurants, leisure facilities and train station.

This exceptionally well presented, four-bedroom detached family home has recently been refurbished throughout. Notable features include a modern kitchen and bathrooms, all tastefully updated, with a high-end finish. The spacious interior is complemented by stylish, contemporary décor and consists of entrance hall, lounge, a substantial open-plan kitchen/dining room, utility room and downstairs cloakroom. On the first floor, you have four bedrooms, with an ensuite to the primary and a luxury family bathroom. Externally, the home offers plentiful off road parking and a private, enclosed rear garden.









TROWBRIDGE OFFICE
9 Fore Street, Trowbridge,
Wiltshire BA14 8HD

WESTBURY OFFICE
16 High Street, Westbury,
Wiltshire BA13 3BW

Teleph one: 01 225 7 766 99
Email: trowbridge@townandcountryestates.com

Telephone: 0 137 3 8244 44
Email: westbury@townandcountryestates.com

www.townandcountryestates.com

SALES & MORTGAGES & LETTINGS

TOWN & COUNTRY MORTGAGES

FEE FREE Mortgage Services

- RE-MORTGAGES
- FIRST TIME BUYER
- HOME MOVER
- BUY TO LET



YOUR PROPERTY MAY BE REPOSSESSED IF YOU DO NOT
KEEP UP REPAYMENTS ON YOUR MORTGAGE

OFFICE, HOME AND TELEPHONE
APPOINTMENTS AVAILABLE

CONTACT US ON:
01225 776699

BOOK ONLINE:
www.townandcountrymortgages.net

FIND US ON  

OLIVER BROWNING
Managing Director

NB. Town and Country Estates have not tested any equipment, fixtures, fittings or services and cannot guarantee that they are in working order. Buyers are advised to seek professional advice from their solicitors or surveyor. Internal measurements should not be relied upon for fitting of carpets or furniture without checking. These details have been prepared in good faith and whilst believed to be correct give notice that none of the statements are to be relied upon as statements or representations of fact. Some statements are inevitably subjective and are therefore the view of the author at the time the information was prepared. If any items are particularly important to you then please check with this office first, especially if travelling some distance to view.