

TOWN & COUNTRY
ESTATES



38 Ashley Close, Bradford On Avon, , BA15 1RZ

£1,600

LOCATION

The property is conveniently situated on the Bath side of Bradford on Avon both and within walking distance of, St Laurence secondary school and Christchurch primary school. It offers relatively easy and speedy access to the town centre with its many independent shops, high-end restaurants, popular public houses, library, swimming pool, playing fields and tennis courts, and there is a convenience shop just a stones-throw away for the every day essentials. The railway station which provides direct services to Bath, Bristol and London Waterloo is approximately 15 minutes away on foot. There is also a local bus service which offers access into the town centre and further afield.



DESCRIPTION

A well presented three bedroom terraced house. The property benefits from upvc double glazing, gas central heating, three good sized bedrooms each with built in storage cupboards, family bathroom, living room with feature fireplace, dining room overlooking the rear garden, kitchen and utility, downstairs w.c, and front and rear gardens.

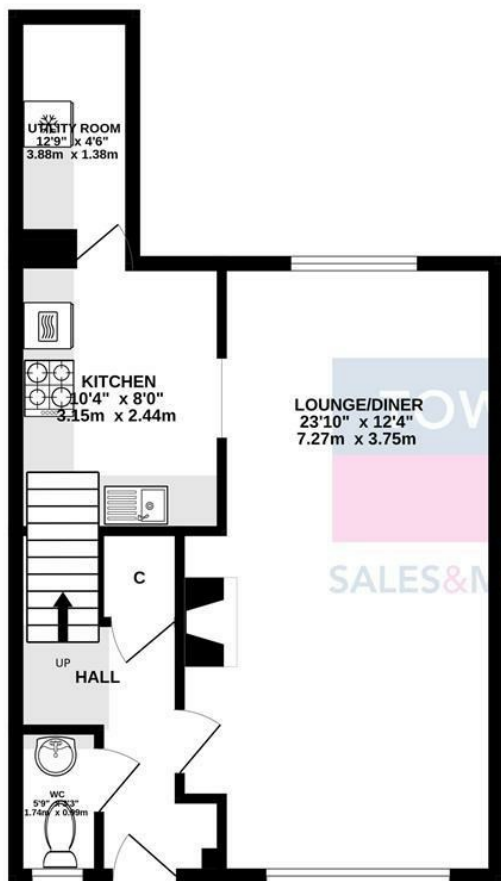




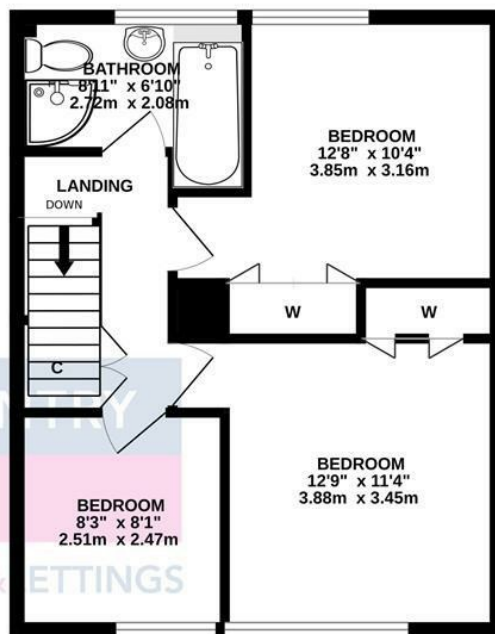




GROUND FLOOR
482 sq.ft. (44.8 sq.m.) approx.



1ST FLOOR
443 sq.ft. (41.2 sq.m.) approx.



TOTAL FLOOR AREA : 925 sq.ft. (85.9 sq.m.) approx.

Whilst every attempt has been made to ensure the accuracy of the floorplan contained here, measurements of doors, windows, rooms and any other items are approximate and no responsibility is taken for any error, omission or mis-statement. This plan is for illustrative purposes only and should be used as such by any prospective purchaser. The services, systems and appliances shown have not been tested and no guarantee as to their operability or efficiency can be given.
Made with Metropix ©2024

