

TOWN & COUNTRY
ESTATES



16 Manvers House, Trowbridge, Wiltshire, BA14 8YX

£150,000

LOCATION

The property is located in the recently converted Manvers House which is conveniently located in Trowbridge town Centre, providing simple access for all amenities including the train station, shopping center, supermarkets, cinema and restaurants.

DESCRIPTION

The property is on the 2nd floor of Manvers house and can be accessed via a communal stair way or by lift. This beautifully presented apartment feels spacious and light and benefits from an entrance hall, modern bathroom, large bedroom and a spacious open plan kitchen/lounge/diner. Externally there is a numbered allocating parking space provided in a secure gated car park.

MAIN ENTRANCE

The building is entered via a secure door with an intercom system. Once inside there is a clean and well presented communal entrance hall, stairs and lift leading to all apartments

ENTRANCE HALL

The property is entered via a secure solid wood door with intercom. The entrance hall has wood effect flooring, electric radiator, storage cupboard, airing cupboard and doors to all rooms.

BATHROOM

The well proportioned and modern bathroom has tiled effect flooring, heating towel rail, extractor fan, tiled splash backs, close couple W.C, pedestal wash hand basin, bath and mains fed shower over.

BEDROOM

9'10" x 11'5"

The large double bedroom has a UPVC double glazed window, electric radiator and space for wardrobes.

LOUNGE/KITCHEN/DINER

22'2" x 10'7"

This light and spacious open plan living space benefits from wood effect laminate flooring, three UPVC double glazed windows and two radiators.

The kitchen area has a matching range of wall, base and draw units with laminate work surfaces, inset stainless steel sink, electric hob with extractor over, built in electric oven, space for washing machine and space for fridge/freezer.

EXTERNAL

Externally the property benefits from a numbered allocated parking space in a secure, gated private car park.

ADDITIONAL INFORMATION/LEASE

Leasehold with 998 years remaining

No Ground Rent

Service Charge - £670 per year

Council Tax Band A

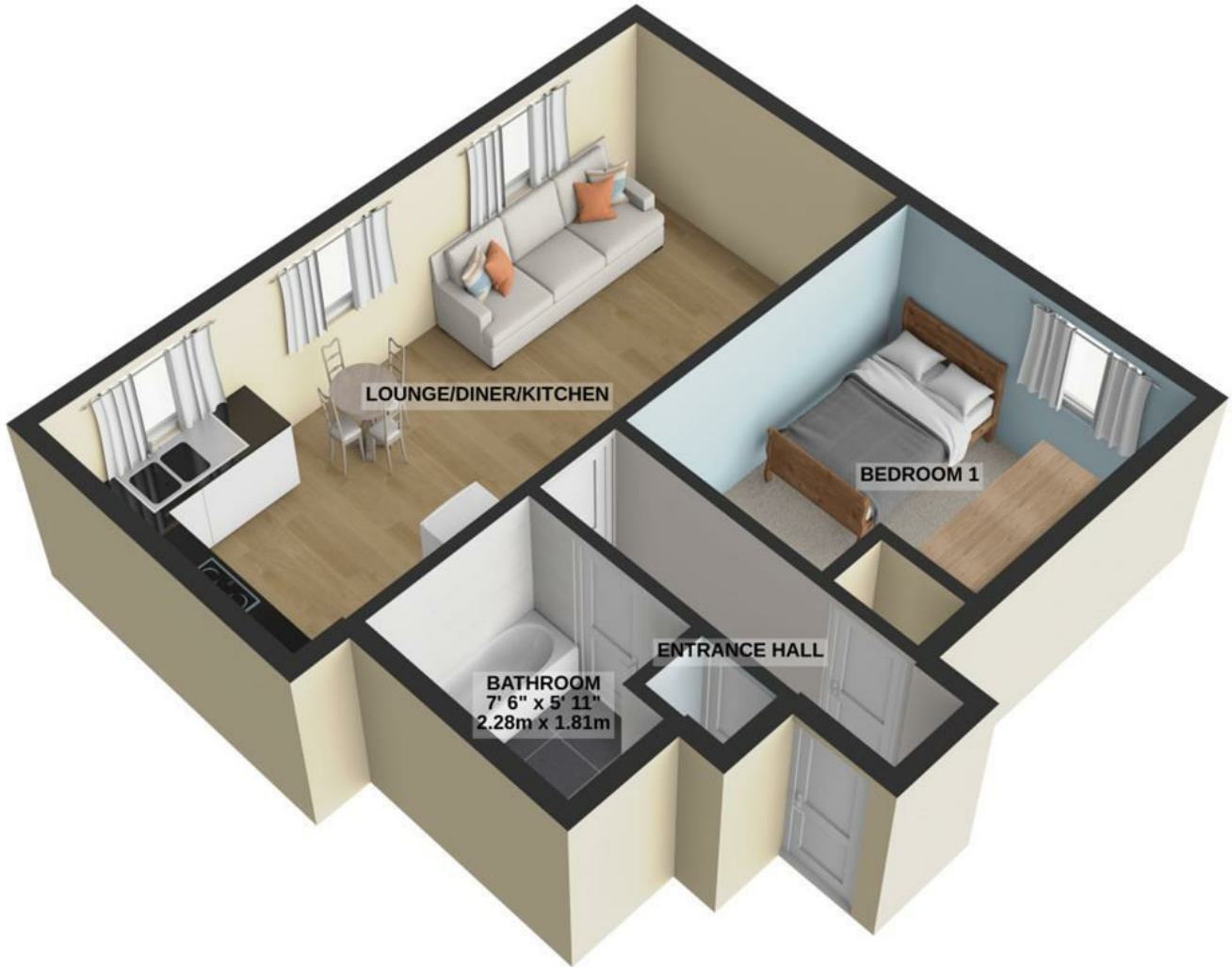






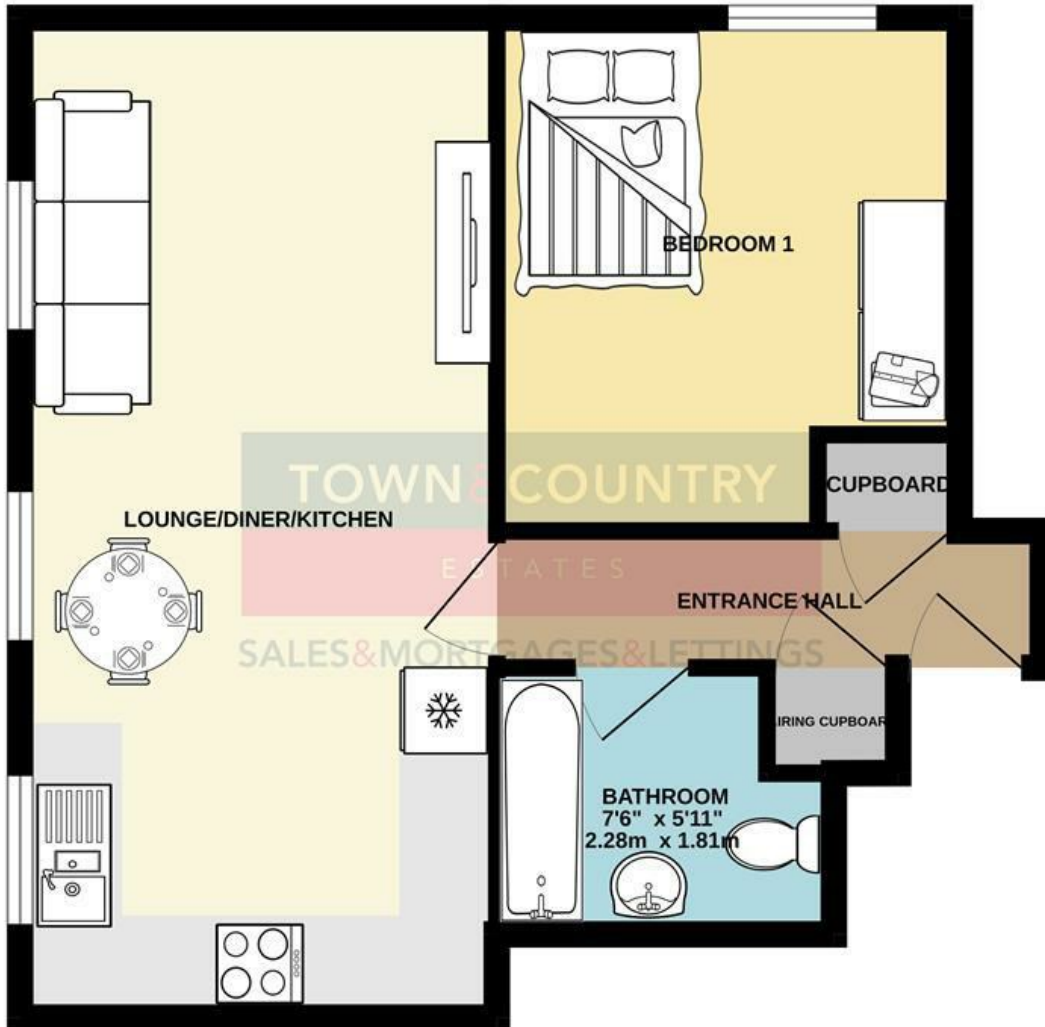


GROUND FLOOR
437 sq.ft. (40.6 sq.m.) approx.



For illustrative purposes only. Decorative finishes, fixtures, fittings and furnishings do not represent the current state of the property. Measurements are approximate. Not to scale.
Made with Metropix © 2024

GROUND FLOOR



Whilst every attempt has been made to ensure the accuracy of the floorplan contained here, measurements of doors, windows, rooms and any other items are approximate and no responsibility is taken for any error, omission or mis-statement. This plan is for illustrative purposes only and should be used as such by any prospective purchaser. The services, systems and appliances shown have not been tested and no guarantee as to their operability or efficiency can be given.
Made with Metropix ©2024

SALES & MORTGAGES & LETTINGS

TOWN & COUNTRY MORTGAGES

FEE FREE Mortgage Services

- RE-MORTGAGES
- FIRST TIME BUYER
- HOME MOVER
- BUY TO LET



YOUR PROPERTY MAY BE REPOSSESSED IF YOU DO NOT
KEEP UP REPAYMENTS ON YOUR MORTGAGE

OFFICE, HOME AND TELEPHONE
APPOINTMENTS AVAILABLE

CONTACT US ON:
01225 776699

BOOK ONLINE:
www.townandcountrymortgages.net



OLIVER BROWNING
Managing Director

FIND US ON  

NB. Town and Country Estates have not tested any equipment, fixtures, fittings or services and cannot guarantee that they are in working order. Buyers are advised to seek professional advice from their solicitors or surveyor. Internal measurements should not be relied upon for fitting of carpets or furniture without checking. These details have been prepared in good faith and whilst believed to be correct give notice that none of the statements are to be relied upon as statements or representations of fact. Some statements are inevitably subjective and are therefore the view of the author at the time the information was prepared. If any items are particularly important to you then please check with this office first, especially if travelling some distance to view.