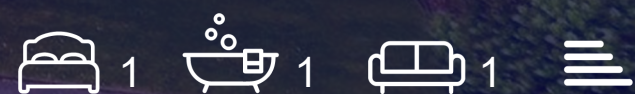




Eastcroft House, Northolt Road, South Harrow, HA2 0ES

Asking Price £250,000





86 Northolt Road

South Harrow, HA2 0ES

- Fifth Floor Apartment
- Lift Serviced
- Modern Open Plan Kitchen
- Entryphone System
- Close To South Harrow Station
- One Double Bedroom
- Open Plan Reception Room
- Fully Tiled Bathroom
- Storage Cupboard
- Leasehold 135 Years Remaining

This well-maintained fifth-floor apartment in Eastcroft House, South Harrow, offers modern living in a prime location just 360 yards from South Harrow's Piccadilly Line Tube Station and close to local amenities, shops, and schools. Featuring a bright and spacious double bedroom with a built-in wardrobe, an open-plan reception room and kitchen with integrated appliances, and a fully tiled bathroom, the property is filled with natural light thanks to floor-to-ceiling windows. Additional highlights include hardwood flooring, a utility cupboard, storage space, an entryphone system, and lift access. Leasehold with 135 years remaining, a ground rent of £380 per annum, and a service charge of £2,100 per annum. Ideal for first-time buyers or investors, viewing is highly recommended.



INTERNALLY

EXTERNALLY

LOCATION

ADDITIONAL INFORMATION





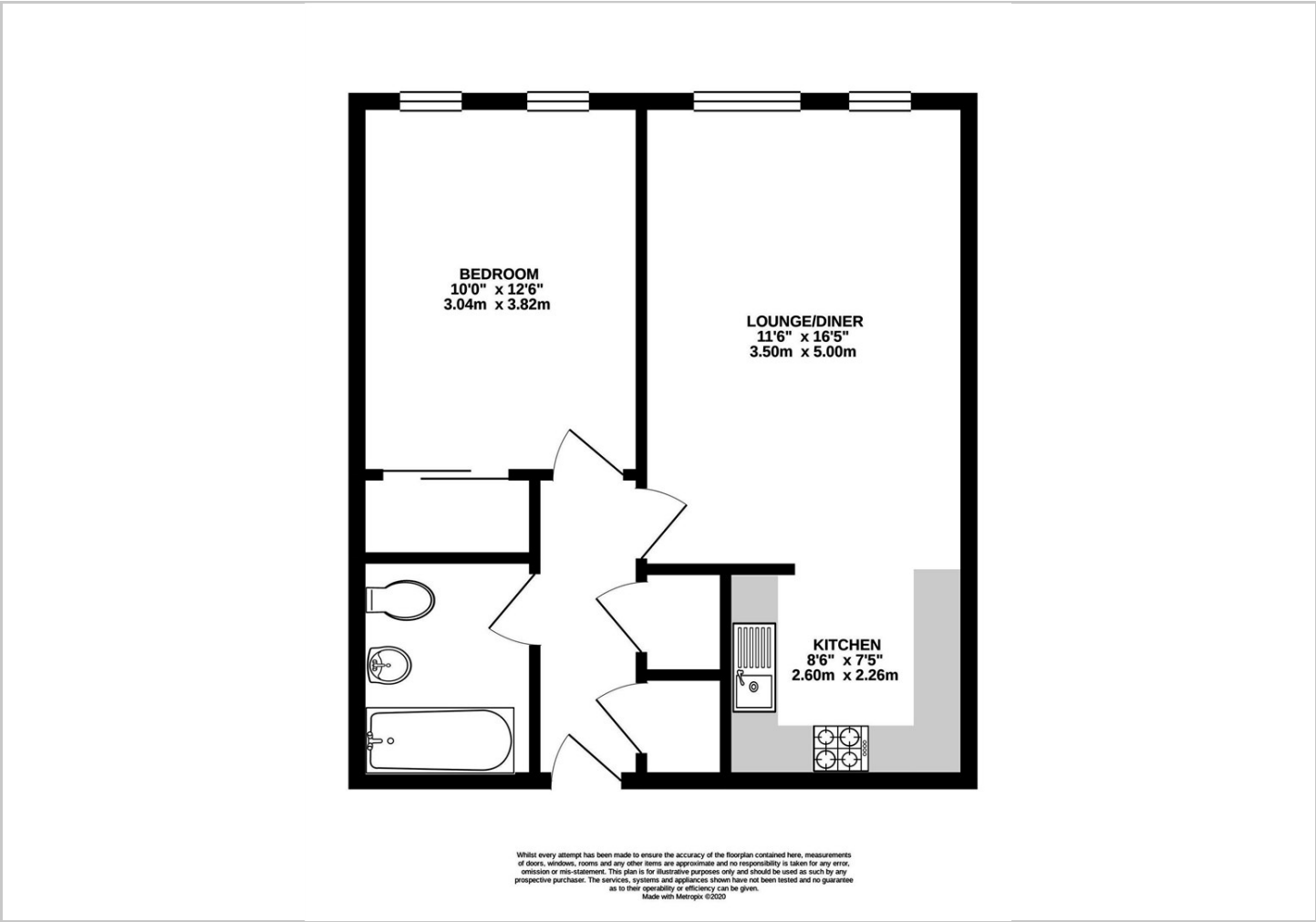
Council Tax Band - C

Leasehold





Floor Plans



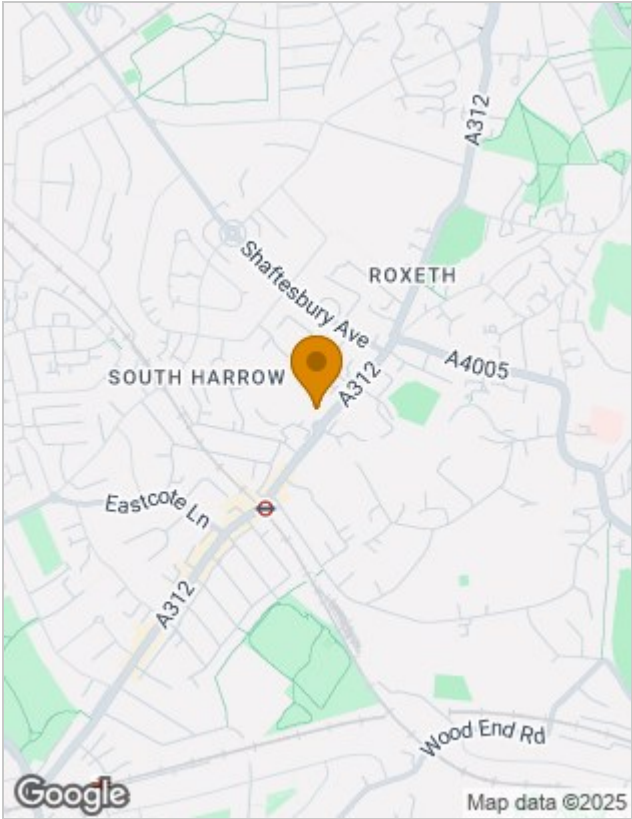
Viewing

Please contact our David Conway & Co Ltd Office on 02084225222 if you wish to arrange a viewing appointment for this property or require further information.

The particulars are set out as a general outline only for the guidance of intended purchasers or lessees, and do not constitute, any part of a contract. Nothing in these particulars shall be deemed to be a statement that the property is in good structural condition or otherwise nor that any of the services, appliances, equipment or facilities are in good working order. Purchasers should satisfy themselves of this prior to purchasing.

269 Northolt Road, Harrow, Middlesex, HA2 8HS
Tel: 02084225222 Email: sales@davidconway.co.uk <https://www.davidconway.co.uk/>

Location Map



Energy Performance Graph

