



Welbeck Road, Harrow, HA2 0RP

Asking Price £775,000

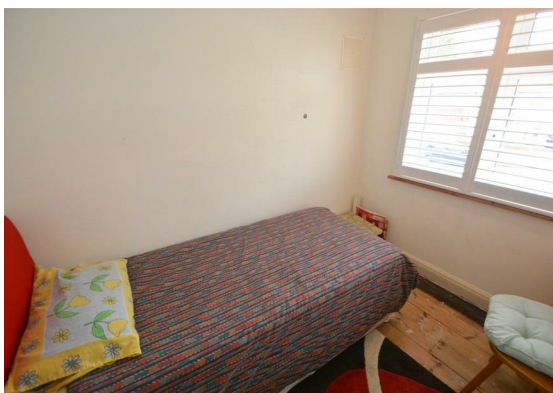


## Welbeck Road, Harrow, HA2 0RP

Located on Welbeck Road, Harrow, this beautifully presented extended four-bedroom semi-detached house combines style and functionality, perfect for families. The home features a bright through lounge with direct garden access, an extended modern kitchen with dining space, and a ground-floor bedroom with an en suite shower room. Upstairs, there are two double bedrooms with fitted wardrobes, a single bedroom, a fully tiled family bathroom, and a separate WC. Externally, the property boasts off-street parking for multiple cars and a large rear garden ideal for outdoor activities. Situated close to local shops, schools, and transport links, including Rayners Lane and West Harrow Underground Stations, this freehold property is within convenient reach of amenities and parks. Council Tax Band E (£2,794.40).



- Semi Detached House
- Four Bedrooms
- Through Lounge
- Modern Kitchen
- Tiled Bathroom
- Separate WC
- Garden
- Off Street Parking



**Council Tax Band: E**

**Freehold**



## INTERNALLY

This beautifully presented four-bedroom semi-detached house offers a perfect blend of style and functionality. Upon entering through the front door, you are greeted by a welcoming hallway that features a staircase to the first-floor landing and convenient under-stair storage. Off the hallway, you'll find a bright and airy through lounge, enhanced by a large bay window at the front and additional windows and a patio door at the rear, which provide abundant natural light and direct access to the garden.

The spacious kitchen is equipped with matching wall and base units, ample countertop space, a gas hob with an extractor fan, built-in ovens, and a stainless steel 1.5 bowl under-mount sink. This area also includes a dining space with a rear door leading to the garden. The ground floor further benefits from a double bedroom with a front-aspect window and an en suite shower room.

Ascending the stairs to the first-floor landing, you'll notice a side-aspect window that floods the area with natural light. The landing provides access to two double bedrooms, both featuring fitted wardrobes, a single bedroom, a fully tiled family bathroom, and a separate WC.

## EXTERNALLY

The property boasts off-street parking for multiple cars and a large rear garden, ideal for outdoor entertaining and family activities.

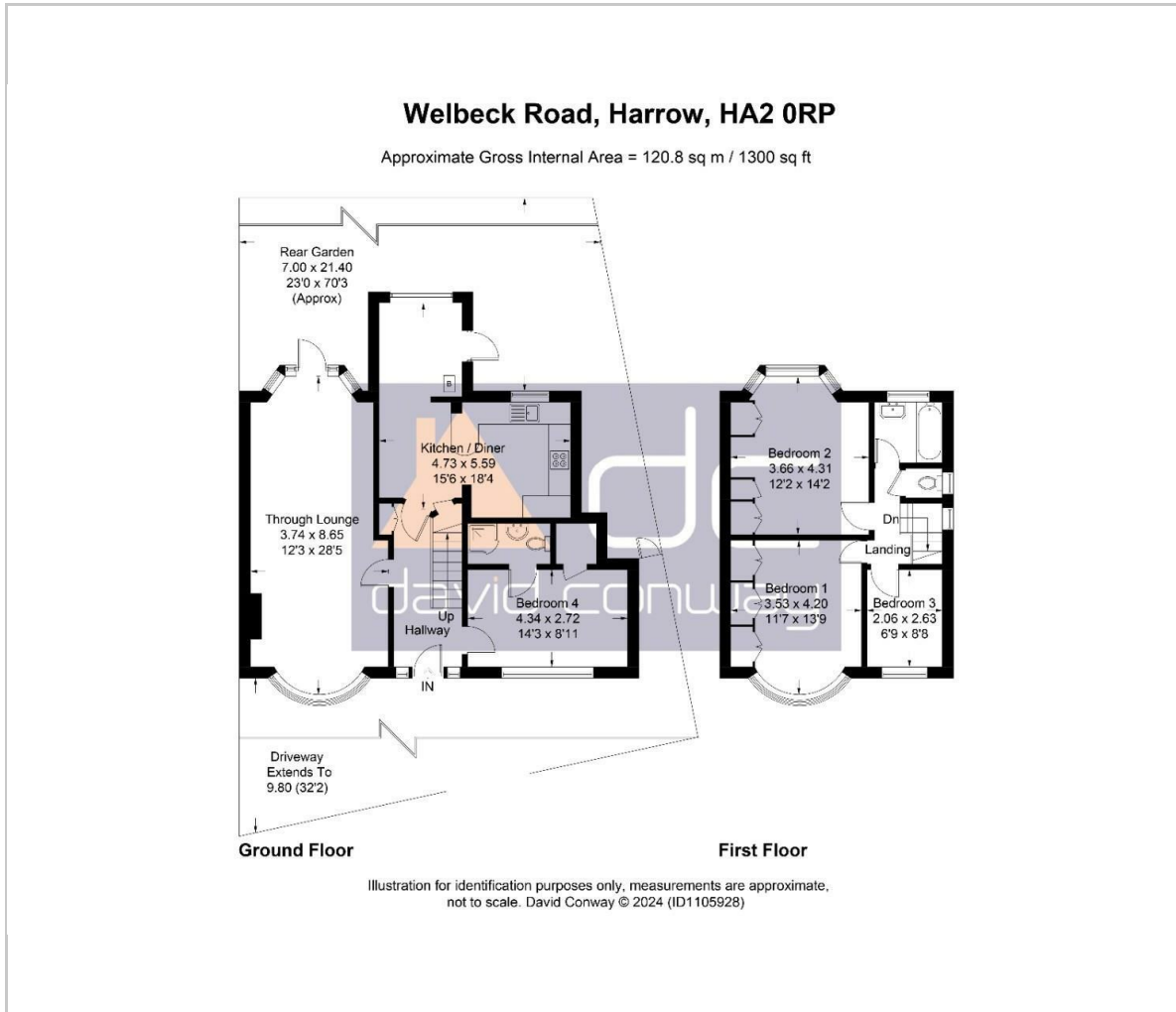
## LOCATION

Welbeck road is located within walking distance to a number of local shops and amenities which include Tesco, Waitrose, Aldi and Iceland as well as West Harrow Park just 0.4 miles away. There are a few schools also conveniently located such as Grange Primary School 0.2 miles away, Whitmore High School & Alexandra School both 0.6 miles away. Local transports links include Rayners Lane Underground Station 0.5 miles away, West Harrow Underground Station 0.8 miles away and South Harrow Underground Station 0.9 miles away.

## ADDITIONAL INFORMATION

Council Tax Band E - £2,794.40

## Floor Plan



## Viewing

Please contact our David Conway & Co Ltd Office on 02084225222 if you wish to arrange a viewing appointment for this property or require further information.

These particulars, whilst believed to be accurate are set out as a general outline only for guidance and do not constitute any part of an offer or contract. Intending purchasers should not rely on them as statements of representation of fact, but must satisfy themselves by inspection or otherwise as to their accuracy. No person in this firm's employment has the authority to make or give any representation or warranty in respect of the property.

269 Northolt Road, Harrow, Middlesex, HA2 8HS  
Tel: 02084225222 Email: sales@davidconway.co.uk <https://www.davidconway.co.uk/>

## Area Map



## Energy Efficiency Graph

