



OVER 60?

Secure this property
for up to **59% less!**

Price

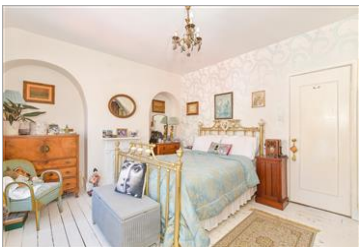
£325,000

Freehold

4x  1x  1x 

**Queen Street,
Littlehampton, West
Sussex, BN17**

cubitt&west
Helping you move forwards



Main features

- Charming Victorian family home
- Pretty decked and lawned rear garden
- Lovely through lounge/diner with attractive wood burner
- French doors leading onto rear garden
- Conveniently located for Town Centre and mainline train station

Accommodation

GROUND FLOOR

Entrance Hallway

Lounge: 11'7 x 11'3 (3.53m x 3.43m)

Dining Area: 11'10 x 11'3 (3.61m x 3.43m)

Kitchen: 14'4 x 7'11 (4.37m x 2.41m)

FIRST FLOOR

Landing

Bedroom 1: 14'9 x 11'7 (4.50m x 3.53m)

Bedroom 3: 14'4 x 7'11 (4.37m x 2.41m)

Bedroom 4: 8'5 x 6'7 (2.57m x 2.01m)

Bathroom

SECOND FLOOR

Landing

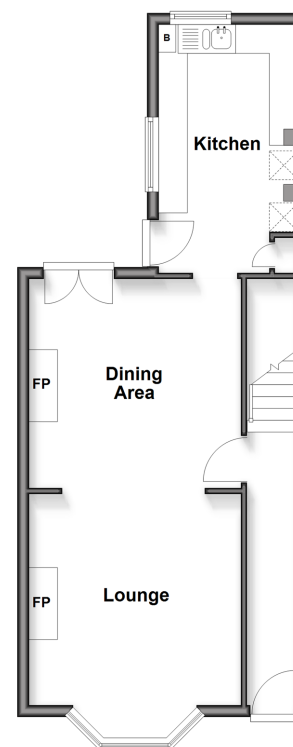
Bedroom 2: 14'9 x 14'4 (4.50m x 4.37m)

OUTSIDE

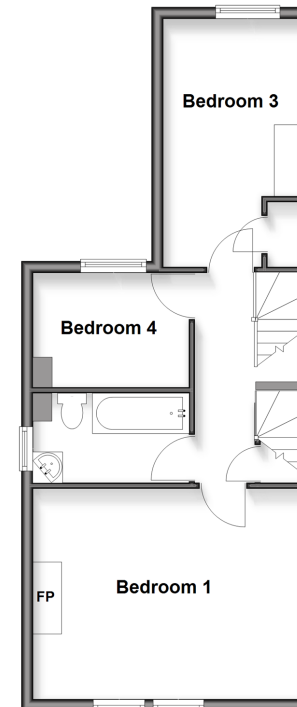
Front Garden

Rear Garden

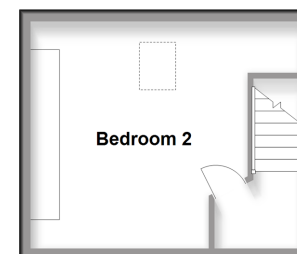
Ground Floor
Approx. 45.8 sq. metres (492.8 sq. feet)



First Floor
Approx. 45.5 sq. metres (489.5 sq. feet)



Second Floor
Approx. 18.5 sq. metres (199.2 sq. feet)



Call Rustington - 01903 775576 ■ cubittandwest.co.uk

- Legal advice should be taken to verify fixtures/fittings, planning, alterations and/or lease details
- Appliances & services are untested, dimensions are approximate and floor plans are not to scale
- Through a Homewise Home For Life Plan people aged 60+ can secure this property for up to 59% less, by purchasing a Lifetime Lease.



23708542/20250718/FM/LFOG