



Guide Price
£250,000

Freehold

3x  1x  1x 

**Elspring Mead, Wick,
Littlehampton, West
Sussex, BN17**

OVER 60?

Secure this property
for up to **59% less!**

cubitt&west
Helping you move forwards



Main features

- Spacious family home with solar panels
- Great buy to let or first time buy
- Modern recently fitted shower room and modern kitchen
- Conservatory leading onto rear garden
- Rear garden benefits from 2 storage facilities

Accommodation

GROUND FLOOR

Entrance Hallway

Cloakroom

Lounge: 15'9 x 11'2 (4.80m x 3.41m)

Dining Area: 12'6 x 8'8 (3.81m x 2.64m)

Kitchen: 14'5 x 7'11 (4.40m x 2.41m)

Conservatory: 12'2 x 11'7 (3.71m x 3.53m)

FIRST FLOOR

Landing

Bedroom 1: 13'5 x 10'6 (4.09m x 3.20m)

Bedroom 2: 11'10 x 10'6 (3.61m x 3.20m)

Bedroom 3: 9'8 x 7'11 (2.95m x 2.41m)

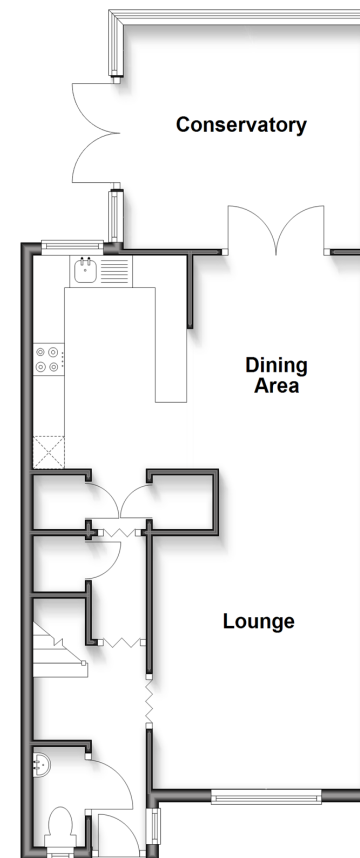
Shower Room

OUTSIDE

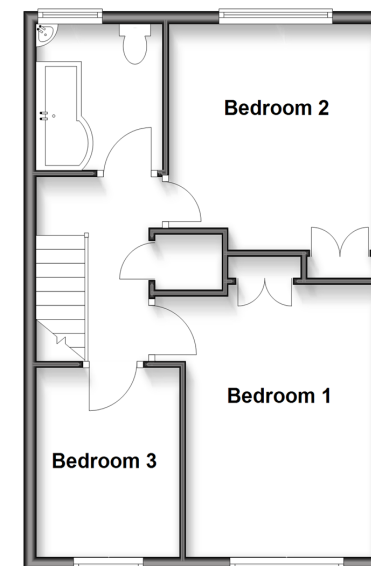
Front Garden

Rear Garden

Ground Floor
Approx. 58.7 sq. metres (631.6 sq. feet)



First Floor
Approx. 44.5 sq. metres (478.7 sq. feet)



Call Rustington - 01903 775576 ■ cubittandwest.co.uk

- Legal advice should be taken to verify fixtures/fittings, planning, alterations and/or lease details
- Appliances & services are untested, dimensions are approximate and floor plans are not to scale
- Through a Homewise Home For Life Plan people aged 60+ can secure this property for up to 59% less, by purchasing a Lifetime Lease.



23708423/20250804/EN/LFOG