

OVER 60?

Secure this property
for up to **59% less!**



Price
£725,000
Freehold

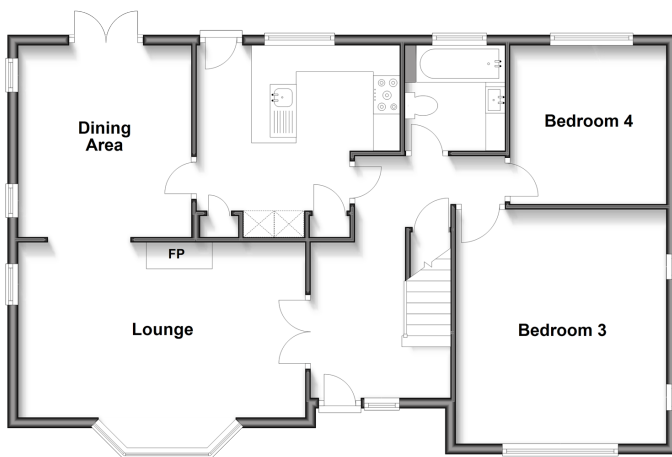
4x  2x  2x 

Greenwood Drive, Angmering, West
Sussex, BN16

cubitt&west
Helping you move forwards

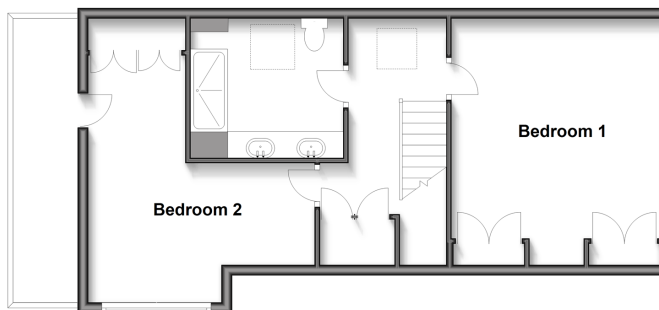
Ground Floor

Approx. 88.1 sq. metres (948.7 sq. feet)



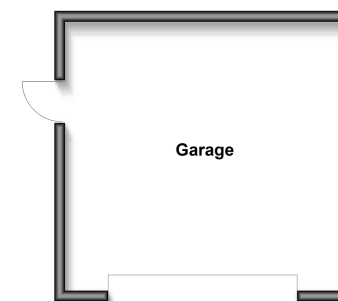
First Floor

Approx. 52.6 sq. metres (566.6 sq. feet)



Outbuilding

Approx. 26.6 sq. metres (286.5 sq. feet)



Accommodation

GROUND FLOOR

Entrance Hallway

Lounge : 18'10 x 9'6 (5.74m x 2.90m)

Dining Area: 11'8 x 10'7 (3.56m x 3.23m)

Kitchen: 12'5 x 9'8 (3.79m x 2.95m)

Bedroom 4: 10'1 x 9'6 (3.08m x 2.90m)

Bedroom 3: 14'2 x 13'0 (4.32m x 3.97m) narrowing to 5'11 x 6'11 (1.80m x 2.11m)

Family Bathroom

FIRST FLOOR

Landing

Bedroom 1: 15'5 x 14'1 (4.70m x 4.30m) narrowing to 8'6 x 5'9 (2.59m x 1.75m)

Bedroom 2: 15'3 x 13'9 (4.65m x 4.19m)

Walk in Storage room

Shower Room

OUTBUILDING

Double Garage

OUTSIDE

Front Garden

Rear Garden



Main features

- A superb family home in sought after Angmering Village
- 2 bedrooms downstairs and bathroom
- 2 upstairs bedrooms & shower room
- Enclosed landscaped rear garden
- Lean to with electric side blinds
- Walking distance to good schools & mainline train station with addition of local bus routes close by



Nearest Schools

Primary Schools: St Wilfrids Catholic Primary 0.9 miles, Georgian Gardens Community Primary 1.0 miles, St Margaret's CofE Primary 1.3 miles

Secondary Schools: The Angmering School 0.1 miles, iles



Transport Information

Train Stations: Angmering 0.5 miles, Goring-by-Sea 3.2 miles, Littlehampton 3.7 miles



Address

Greenwood Drive, Angmering, West Sussex, BN16



Directions

For directions to this property please contact us.



cubitt&west
Helping you move forwards

Call Rustington Branch 01903 775576 ■ cubittandwest.co.uk



■ Legal advice should be taken to verify fixtures/fittings, planning, alterations and/or lease details ■ Appliances & services are untested, dimensions are approximate and floor plans are not to scale
■ Through a Homewise Home For Life Plan people aged 60+ can secure this property for up to 59% less, by purchasing a Lifetime Lease.



23704254/20250502/FM/KP