



Guide Price
£330,000

Freehold

3x  1x  1x 

**Fircroft Crescent,
Rustington,
Littlehampton, West
Sussex, BN16**

OVER 60?

Secure this property
for up to **59% less!**

cubitt&west
Helping you move forwards



Main features

- Semi detached bungalow in great location
- Close to Rustington Village with an array of shops and other amenities
- Great road and rail links close by
- Car port and off road parking
- No onward chain

Accommodation

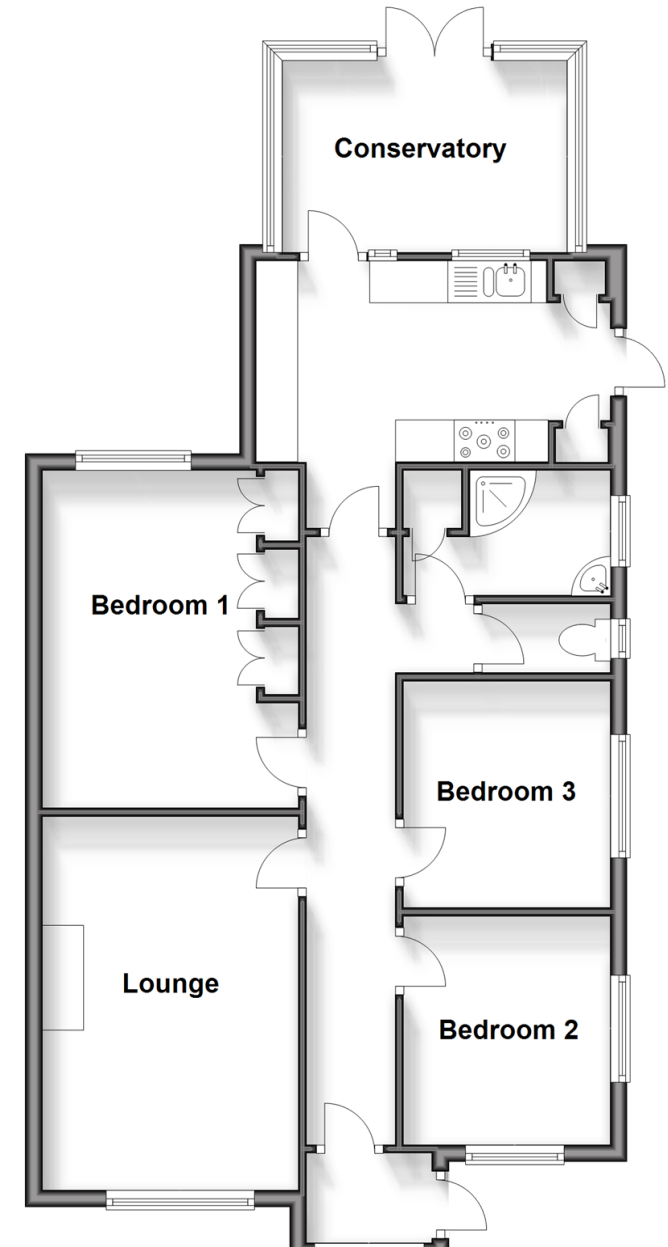
GROUND FLOOR

Entrance
Porch
Hallway
Lounge: 14'6 x 10'1 (4.42m x 3.08m)
Kitchen: 13'8 x 7'5 (4.17m x 2.26m)
Conservatory: 10'9 x 7'2 (3.28m x 2.19m)
Bedroom 1: 13'2 x 10'1 (4.02m x 3.08m)
Bedroom 2: 8'8 x 7'9 (2.64m x 2.36m)
Bedroom 3: 8'9 x 7'8 (2.67m x 2.34m)
Shower Room
Separate Toilet

OUTSIDE

Front Garden
Rear Garden
Car Port
Driveway

Ground Floor
Approx. 77.3 sq. metres (832.3 sq. feet)



Call Rustington - 01903 775576 ■ cubittandwest.co.uk

- Legal advice should be taken to verify fixtures/fittings, planning, alterations and/or lease details
- Appliances & services are untested, dimensions are approximate and floor plans are not to scale
- Through a Homewise Home For Life Plan people aged 60+ can secure this property for up to 59% less, by purchasing a Lifetime Lease.



23708234/20250717/FM/KP