



Price
£525,000

Freehold

3x  1x  2x 

**St. Mary's Close,
Littlehampton, West
Sussex, BN17**

OVER 60?

Secure this property
for up to **59% less!**

cubitt&west
Helping you move forwards

Accommodation

GROUND FLOOR

Entrance Porch

Entrance Hallway

Cloakroom

Lounge: 16'11 x 13'11 (5.16m x 4.24m)

Dining Room: 17'11 x 11'10 (5.46m x 3.61m)

Kitchen: 12'0 x 7'11 (3.66m x 2.41m)

Breakfast Area: 9'0 x 8'4 (2.75m x 2.54m)

Utility Room

FIRST FLOOR

Landing

Bedroom 1: 13'4 x 11'11 (4.07m x 3.63m)

Bedroom 2: 16'0 x 11'11 (4.88m x 3.63m)

Bedroom 3: 10'2 x 7'0 (3.10m x 2.14m)

Bathroom

Separate Toilet

OUTSIDE

Front Garden

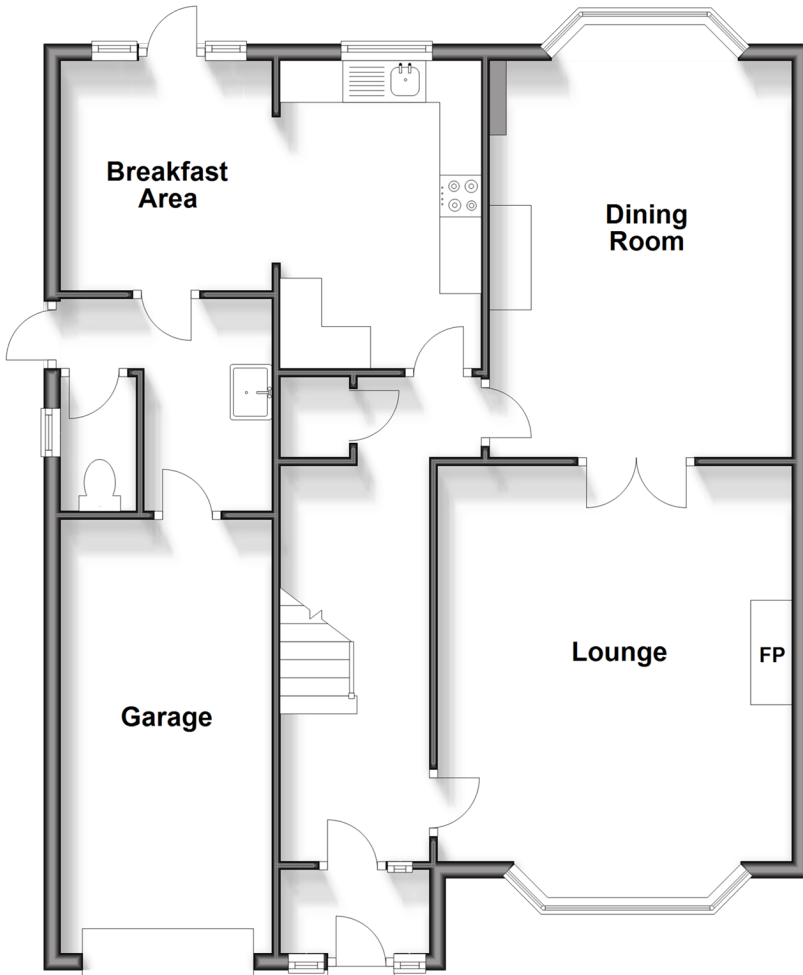
Rear Garden

Integral Garage

Driveway

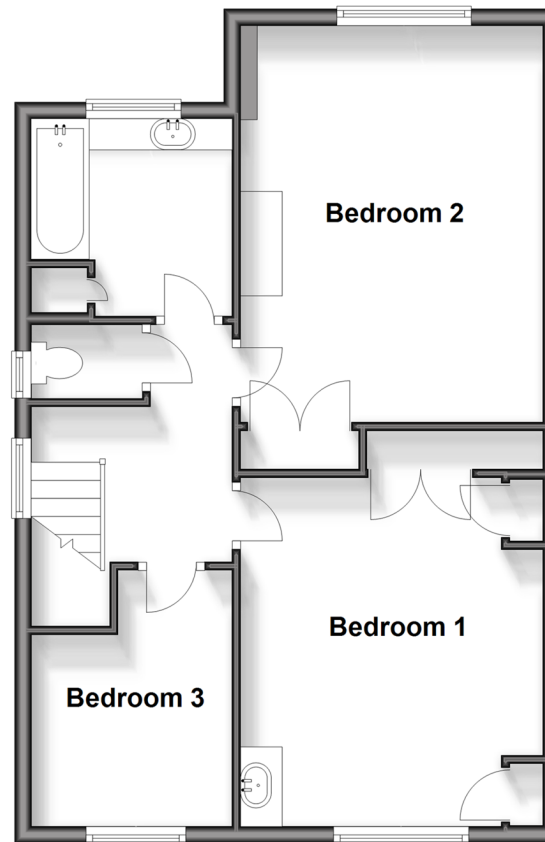
Ground Floor

Approx. 90.0 sq. metres (968.3 sq. feet)



First Floor

Approx. 56.2 sq. metres (605.1 sq. feet)





Main features

- This lovely family home is extremely spacious
- Beautiful well maintained rear garden
- Integral garage and ample parking
- Close to good schools for all ages
- Town centre, train station and seafront short distance away



Nearest Schools

Primary Schools: Connaught Junior School 0.4 miles, St Catherine's Catholic Primary, Littlehampton 0.5 miles, Flora McDonald Junior School 0.7 miles

Secondary Schools: Littlehampton Community School, The



Transport Information

Train Stations: Littlehampton 0.5 miles, Angmering 1.9 miles, Ford 2.3 miles



Address

St. Mary's Close, Littlehampton, West Sussex, BN17



Directions

For directions to this property please contact us.



cubitt&west
Helping you move forwards

Call Rustington Branch 01903 775576 ■ cubittandwest.co.uk



■ Legal advice should be taken to verify fixtures/fittings, planning, alterations and/or lease details ■ Appliances & services are untested, dimensions are approximate and floor plans are not to scale
■ Through a Homewise Home For Life Plan people aged 60+ can secure this property for up to 59% less, by purchasing a Lifetime Lease.



23708238/20240821/EN/KP