

OVER 60?

Secure this property
for up to **59% less!**



Price
£375,000
Freehold

2x  1x  1x 

St. Mary's Way, Littlehampton, West
Sussex, BN17

cubitt&west
Helping you move forwards



Main features

- Great location for town centre and good transport links
- Would benefit from a little updating
- Spacious rooms throughout
- Ideal for putting your own stamp on
- Good size rear garden
- Offered for sale with no ongoing chain

Accommodation

GROUND FLOOR

Entrance Hallway

Lounge: 15'3 x 11'9 (4.65m x 3.58m)

Kitchen/Dining Area: 17'2 x 10'2 (5.24m x 3.10m)

Bedroom 1: 15'4 x 11'4 (4.68m x 3.46m)

Bedroom 2: 11'1 x 9'0 (3.38m x 2.75m)

Bathroom

Separate Toilet

OUTSIDE

Front Garden

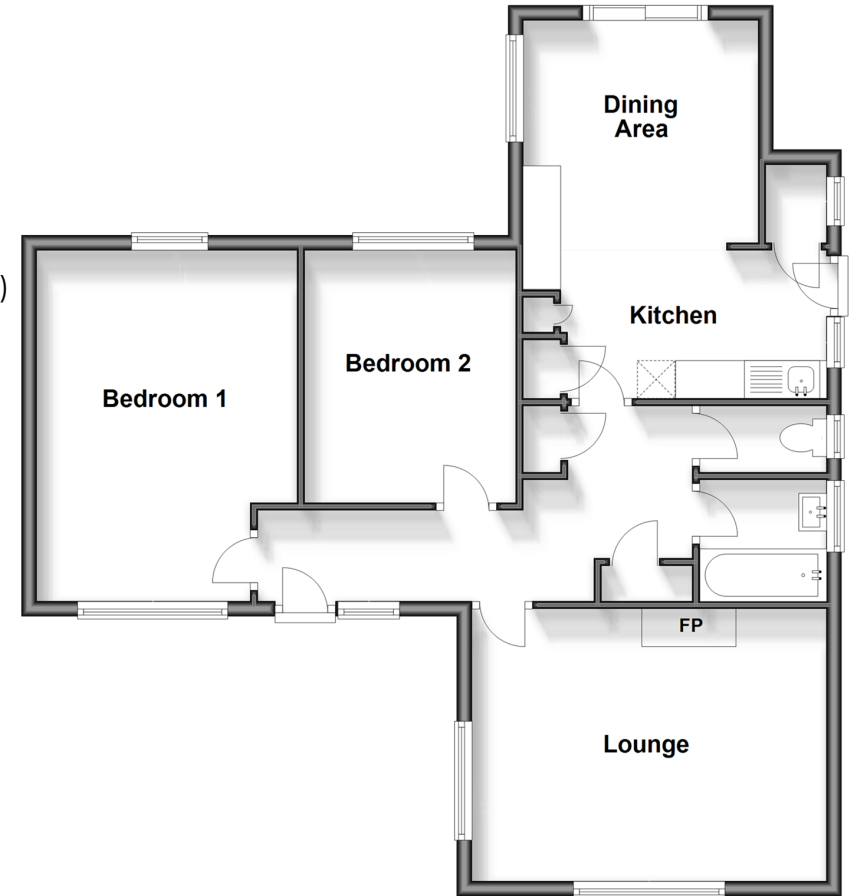
Rear Garden

Garage

Driveway

Ground Floor

Approx. 77.0 sq. metres (828.8 sq. feet)



Call Rustington - 01903 775576 ■ cubittandwest.co.uk

- Legal advice should be taken to verify fixtures/fittings, planning, alterations and/or lease details
- Appliances & services are untested, dimensions are approximate and floor plans are not to scale
- Through a Homewise Home For Life Plan people aged 60+ can secure this property for up to 59% less, by purchasing a Lifetime Lease.



23217506/20240705/FM/KP