

OVER 60?

Secure this property
for up to **59% less!**



Guide Price

£260,000

Freehold

3x  1x  1x 

Potters Mead, Littlehampton, West Sussex,

BN17

cubitt & west
Helping you move forwards



Main features

- Well presented home close to town centre & train station
- Good size downstairs accommodation
- Good schools for all ages nearby
- Attractive outlook to the front
- Ideal first time buy or investment opportunity

Accommodation

GROUND FLOOR

- Entrance Hallway
- Cloakroom
- Lounge/Dining Area: 26'10 x 10'9 (8.18m x 3.28m)
- Kitchen: 14'6 x 7'10 (4.42m x 2.39m)

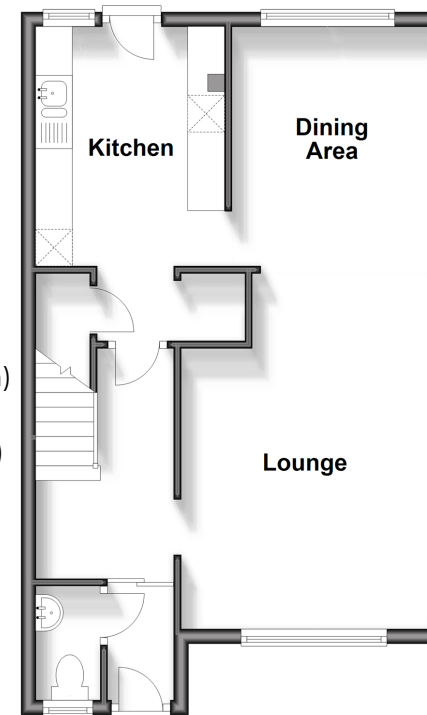
FIRST FLOOR

- Landing
- Bedroom 1: 15'3 x 9'5 (4.65m x 2.87m)
- Bedroom 2: 11'6 x 10'3 (3.51m x 3.13m)
- Bedroom 3: 9'8 x 7'8 (2.95m x 2.34m)
- Bathroom

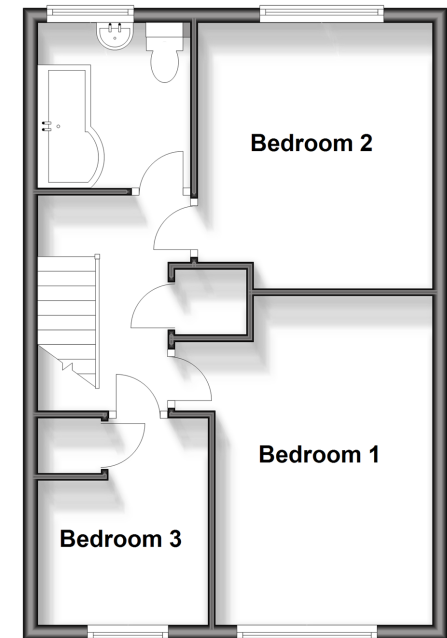
OUTSIDE

- Front Garden
- Rear Garden

Ground Floor
Approx. 46.1 sq. metres (496.7 sq. feet)



First Floor
Approx. 44.3 sq. metres (477.1 sq. feet)



Call Rustington - 01903 775576 ■ cubittandwest.co.uk

- Legal advice should be taken to verify fixtures/fittings, planning, alterations and/or lease details
- Appliances & services are untested, dimensions are approximate and floor plans are not to scale
- Through a Homewise Home For Life Plan people aged 60+ can secure this property for up to 59% less, by purchasing a Lifetime Lease.



23707635/20241003/EN/KP