



Offers Over
£460,000
Freehold

4x  2x  1x 

Jasmine Close, Littlehampton, West
Sussex, BN17

cubitt & west
Helping you move forwards



Main features

- Great size family home on sought after Marlborough Place
- Well presented throughout
- Spacious & versatile downstairs accommodation
- Walking distance to Rustington Village
- Close to good schools for all ages

Accommodation

GROUND FLOOR

Entrance Hallway
Cloakroom

Lounge: 16'1 x 13'3 (4.91m x 4.04m)

Dining Area: 9'1 x 8'0 (2.77m x 2.44m)

Kitchen: 11'9 x 9'2 (3.58m x 2.80m)

Utility Room: 4'9 x 4'8 (1.45m x 1.42m)

FIRST FLOOR

Landing

Bedroom 1: 13'3 maximum x 11'3 (4.04m x 3.43m)

En-suite Shower Room

Bedroom 2: 11'4 x 9'4 (3.46m x 2.85m)

Bedroom 3: 14'1 x 8'7 (4.30m x 2.62m)

Bedroom 4: 8'7 x 8'6 (2.62m x 2.59m)

Family Bathroom

OUTSIDE

Front Garden

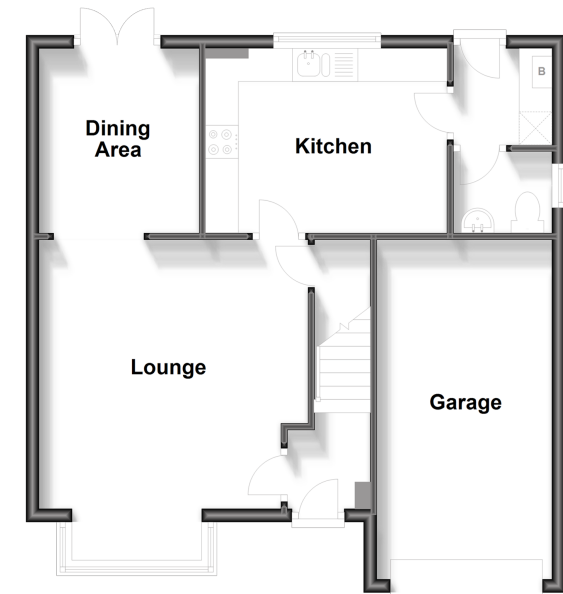
Rear Garden

Garage

Driveway

Ground Floor

Approx. 58.1 sq. metres (625.4 sq. feet)



First Floor

Approx. 54.5 sq. metres (586.5 sq. feet)



Call Rustington - 01903 775576 ■ cubittandwest.co.uk

- Legal advice should be taken to verify fixtures/fittings, planning, alterations and/or lease details
- Appliances & services are untested, dimensions are approximate and floor plans are not to scale



23707900/20240419/KP/KP