

Location



3 Yew Tree Drive, Sutton-In-Ashfield, NG17 2RW

Offers Over £600,000



5



3

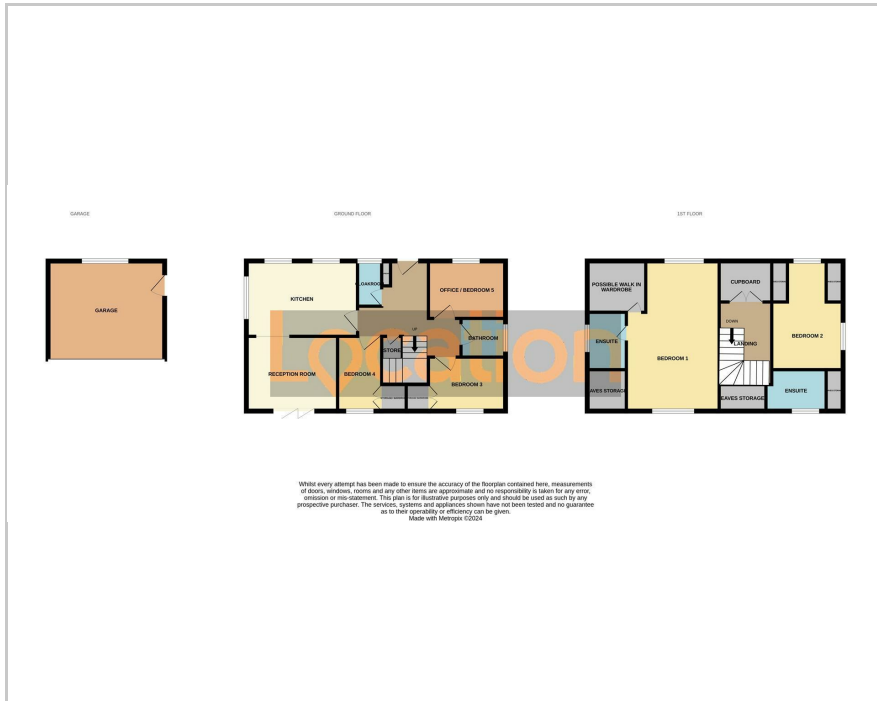


2



B

Floor Plan



Area Map



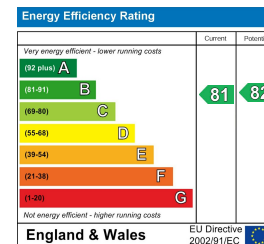
Accommodation

- New Detached Executive Home
- Four Bedrooms
- Two Receptions
- Three Bathrooms
- Quiet Location
- Solar Panels
- Double Garage, Electric Roller Door
- Off Road Parking For Several Vehicles
- Gardens To Rear Great For Entertaining
- Council Tax Band TBC

Viewing

Please contact our Mansfield Sales Office on 01623654555 if you wish to arrange a viewing appointment for this property or require further information.

Energy Efficiency Graph



These particulars, whilst believed to be accurate are set out as a general outline only for guidance and do not constitute any part of an offer or contract. Intending purchasers should not rely on them as statements of representation of fact, but must satisfy themselves by inspection or otherwise as to their accuracy. No person in this firm's employment has the authority to make or give any representation or warranty in respect of the property.

13-15 Albert Street, Mansfield, NG18 1EA

Tel: 01623654555 Email: enquires@locationmansfield.co.uk www.locationstateagency.co.uk