

Location

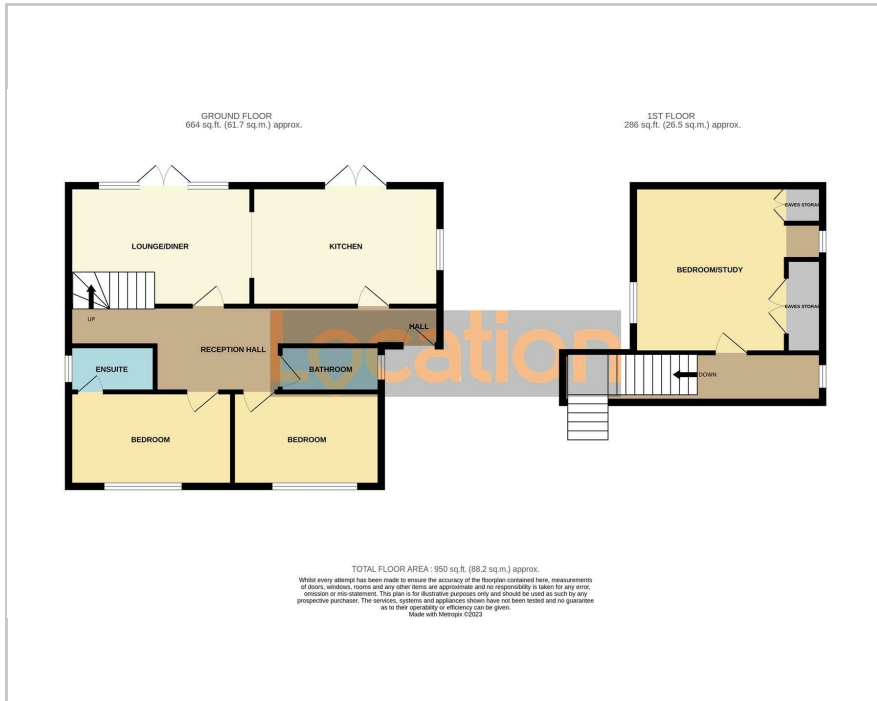


37 Greenholme Close, Nottingham, NG17 8AE

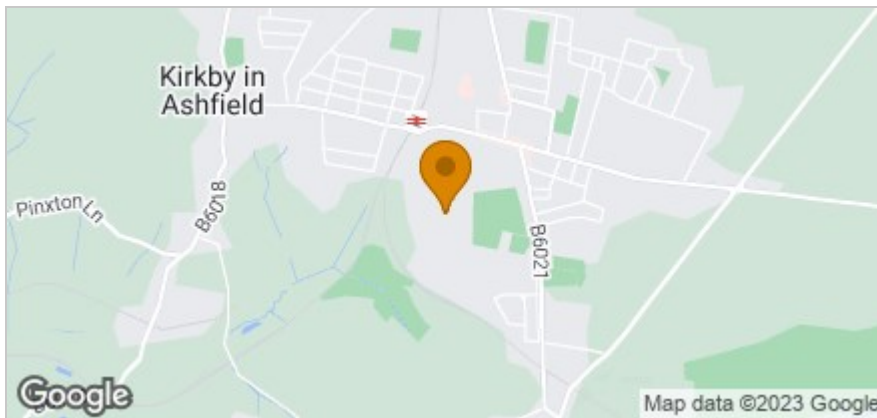
£300,000



Floor Plan



Area Map



Accommodation

- Detached Bungalow
- Extended and Renovated
- Three Bedrooms
- Fitted Robes & Ensuite to Master
- Modern Karndean Flooring
- Gas entral Heating
- Upvc Double Glazing
- Lovely Garden & off road Parking
- Council Tax Band B

Viewing

Please contact our Mansfield Sales Office on 01623654555 if you wish to arrange a viewing appointment for this property or require further information.

Energy Efficiency Graph

Energy Efficiency Rating		Current	Potential
Very energy efficient - lower running costs			
(92 plus)	A		
(81-91)	B		
(69-80)	C		
(55-68)	D		
(39-54)	E		
(21-38)	F		
(1-20)	G		
Not energy efficient - higher running costs			
England & Wales		EU Directive 2002/91/EC	



These particulars, whilst believed to be accurate are set out as a general outline only for guidance and do not constitute any part of an offer or contract. Intending purchasers should not rely on them as statements of representation of fact, but must satisfy themselves by inspection or otherwise as to their accuracy. No person in this firms employment has the authority to make or give any representation or warranty in respect of the property.

13-15 Albert Street, Mansfield, NG18 1EA

Tel: 01623654555 Email: enquires@locationmansfield.co.uk www.locationstateagency.co.uk