

43 Sherwood Street, Reading, Berkshire, RG30 1LF

£335,000 Freehold

Walmsley



Offered to the market is, in our opinion, this very well-presented Victorian end-of-terrace property, conveniently located to the west of Reading town centre. The internal accommodation includes an entrance hall, sitting room, and a separate dining room with under stairs cupboard. The modern high-gloss kitchen is fitted with an integrated hob and oven, and there is a useful utility room with plumbing for a washing machine and a side door providing access to the garden. The bathroom has been refitted and features a modern suite with a shower over the bath. Upstairs, there are three bedrooms arranged in a 2+1 layout. Externally, the property benefits from a low-maintenance rear south facing garden with a patio seating area, an area of artificial lawn, and a side pedestrian access gate.

Viewing is highly recommended. The property is ideally positioned within easy reach of a variety of local amenities, including shops, supermarkets, cafés, restaurants, and traditional pubs. It also benefits from excellent transport links, with Reading West Train Station nearby and multiple frequent bus services providing easy access into the town centre and beyond.

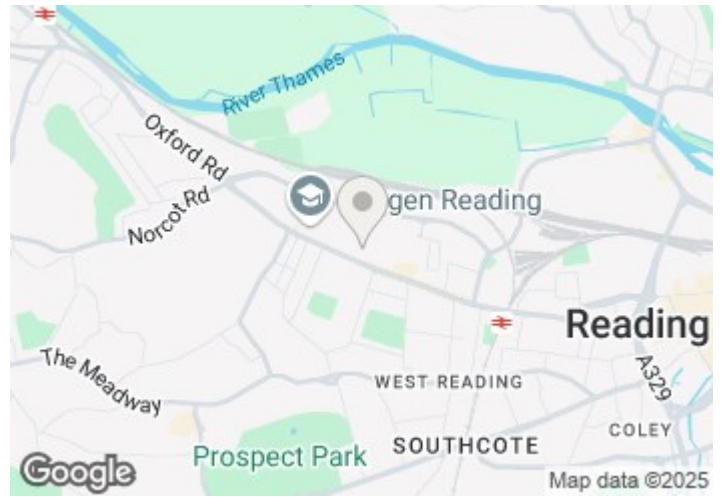
EPC D

Council Tax Band B

<https://moverly.com/sale/8DFhxzhgGm4hYEw11fPiV7/view>



walmsley.co.uk

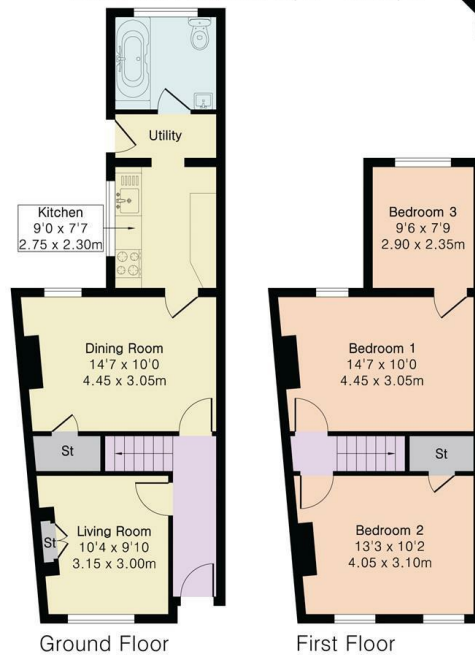


Floor Plan

Approximate Gross Internal Area 865 sq ft - 80 sq m

Ground Floor Area 472 sq ft - 44 sq m

First Floor Area 393 sq ft - 36 sq m



These particulars, whilst believed to be accurate are set out as a general outline only for guidance and do not constitute any part of an offer or contract. Intending purchasers should not rely on them as statements of representation of fact, but must satisfy themselves by inspection or otherwise as to their accuracy. No person in this firm's employment has the authority to make or give any representation or warranty in respect of the property.