



Meadow Way, Caversham, Reading, RG4 5LY

£410,000

**Walmsley**



## Meadow Way, Caversham, Reading, RG4 5LY

Walmsley Estate Agency is delighted to present this modern town house, located in a sought-after area of Caversham. This well-presented property spans across three separate floors, offering impressive accommodation. The ground floor comprises an entrance hall, a cloakroom, and a kitchen with fitted appliances. On the first floor, you'll find two double bedrooms and a family bathroom. The second floor features a spacious master bedroom with an en-suite bathroom. Externally, the property boasts an enclosed, low-maintenance rear garden with side and rear access, as well as resident and visitor parking facilities.

Meadow Way is conveniently situated within easy walking distance of Caversham, Reading, and the mainline train station. The local area is well-served by a variety of shops, schools, bus services, and other local amenities. Viewing this property is highly recommended. EPC rating C. Council tax band D.

\* Service charge for communal grounds £285.31 per annum.

<https://moverly.com/sale/S346esGoJuVsj4d6HNPewu/view>

## Tenure - Freehold





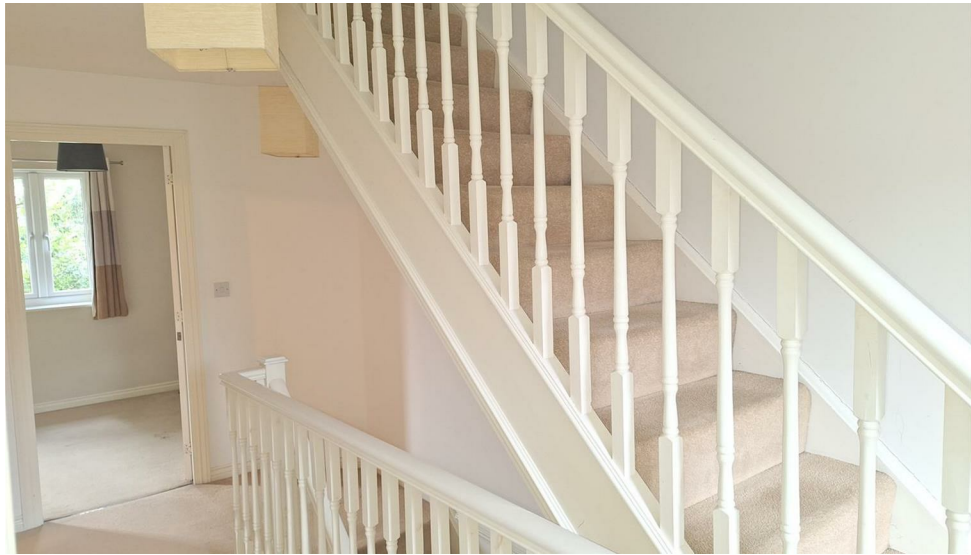
- End Town House
- Off Road Parking
- No Chain
- Ensuite
- Council Tax Band D
- EPC - C

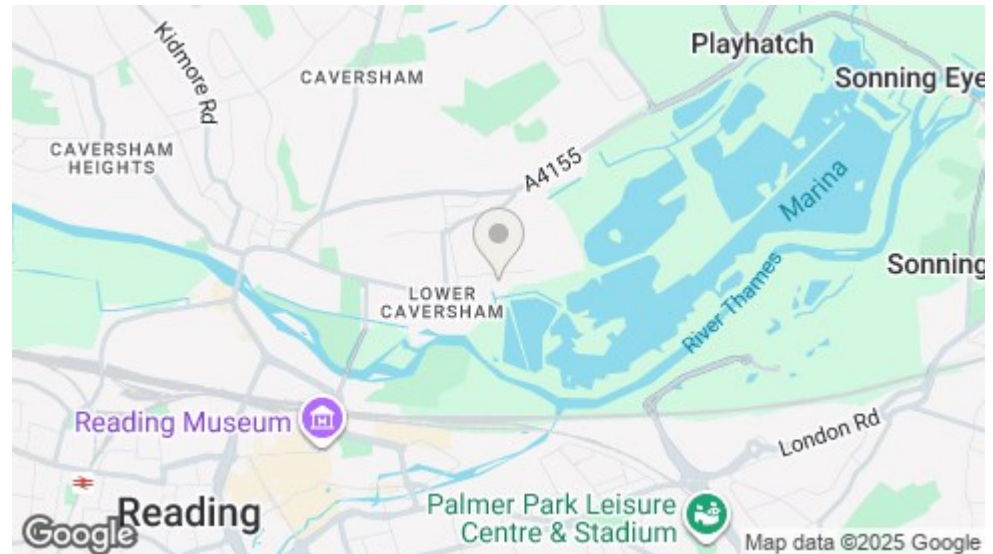
 3
  2
  1
  C

RESIDENTIAL SALES • LETTINGS • PROPERTY MANAGEMENT • NEW HOMES













Important: Walmsley Estate Agents would inform prospective purchasers that these sales particulars have been prepared as a general guide only. A detailed survey has not been carried out, nor the services, appliances and fittings tested. Room sizes should not be relied upon for furnishing purposes and are approximate. If floor plans are included, they are for guidance only and illustration purposes only and may not be to scale. If there are any important matters likely to affect your decision to buy, please contact us before viewing the property.



9-11 Bridge Street, Caversham, Reading, RG4 8AA  
Email: [cavershamsales@walmsley.co.uk](mailto:cavershamsales@walmsley.co.uk) [www.walmsley.co.uk](http://www.walmsley.co.uk)

0118 947 0511

