



Kidmore Road, Caversham Heights, Reading, RG4 7NA

£219,950

Walmesley

Kidmore Road, Caversham Heights, Reading, RG4 7NA

A smart ground floor apartment, situated in the highly regarded Caversham Heights, conveniently located within walking distance of Caversham centre and Reading mainline train station. The property offers light and spacious accommodation comprising a contemporary open plan reception room; incorporating living room and kitchen with high gloss cupboards and integrated appliances, master bedroom and modern fitted shower room. Further benefits of this property include off street parking, spot lighting and gas radiator central heating. Viewing is highly recommended. EPC rating C. Council Tax band B.

- * Current service charge £485 per annum.
- * Current ground rent £400 per annum.
- * Lease length remaining 116.

Tenure - Leasehold





- Highly Desirable Location
- Ground Floor
- Beautifully Presented
- High Gloss Kitchen
- Parking
- EPC Rating C
- Council Tax Band B

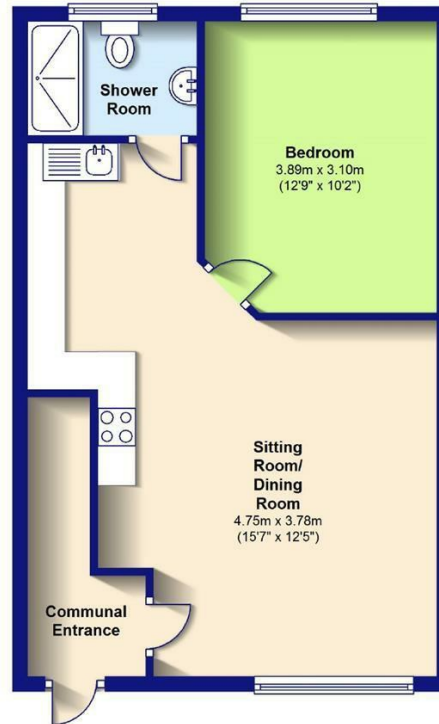


RESIDENTIAL SALES • LETTINGS • PROPERTY MANAGEMENT • NEW HOMES



Ground Floor

Approx. 47.7 sq. metres (513.1 sq. feet)



Total area: approx. 47.7 sq. metres (513.1 sq. feet)

This floorplan is not to scale. They are for guidance only and accuracy is not guaranteed. Plan produced by Prominent Plans. Plan produced using PlanUp.

72 Kidmore road, Flat 2, -

Important: Walmsley Estate Agents would inform prospective purchasers that these sales particulars have been prepared as a general guide only. A detailed survey has not been carried out, nor the services, appliances and fittings tested. Room sizes should not be relied upon for furnishing purposes and are approximate. If floor plans are included, they are for guidance only and illustration purposes only and may not be to scale. If there are any important matters likely to affect your decision to buy, please contact us before viewing the property.

