

Bartholomew Close, EC1A

£3,900 Per calendar month

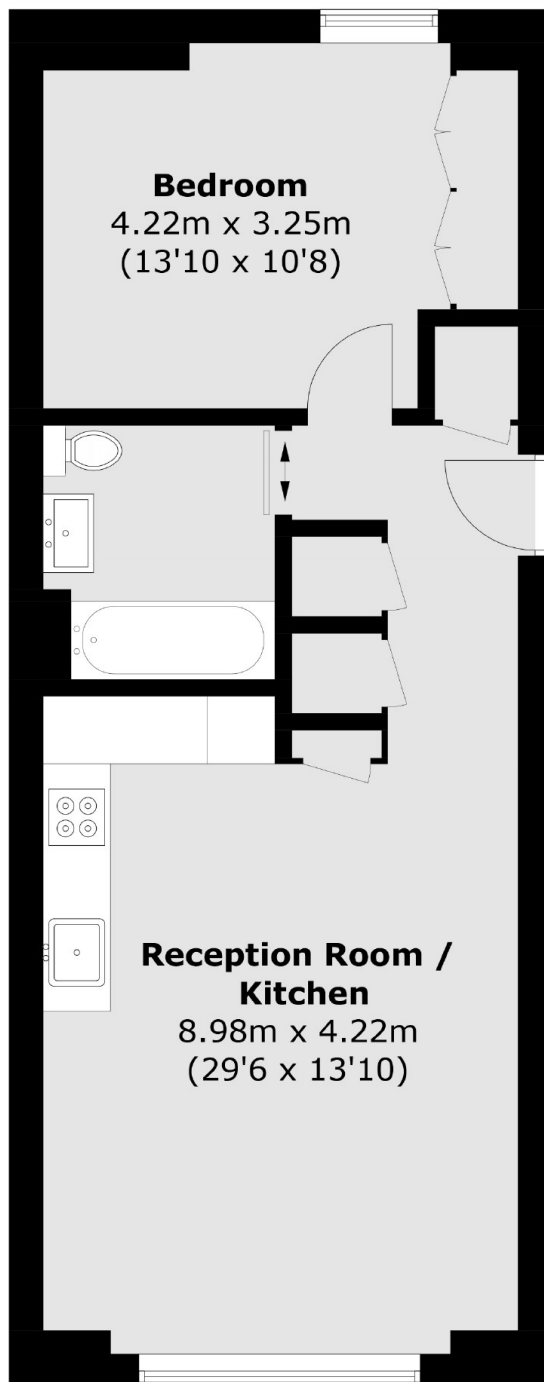
This luxurious, bright & spacious one double bedroom apartment is on the of the highly sought after Bart's Square development, close to Smithfield. Residents have access to a 24 hour concierge, cinema room & private bar.

Bart's Square is one of the most prestigious and sought after developments in the area and is just a short walk from the the City with easy access to both Farringdon and St Paul's stations.

Features

- Wood Floors Throughout
- Garden Views
- 24 Hour Concierge
- Resident Bar and Lounge
- Cinema Room
- Managed by Dexters

Bartholomew Close,
London, EC1A



Total area (approx.): 49.3 sq. m (530.7 sq. ft)