

## Bollinder Place, EC1V

**£5,000** Per calendar month

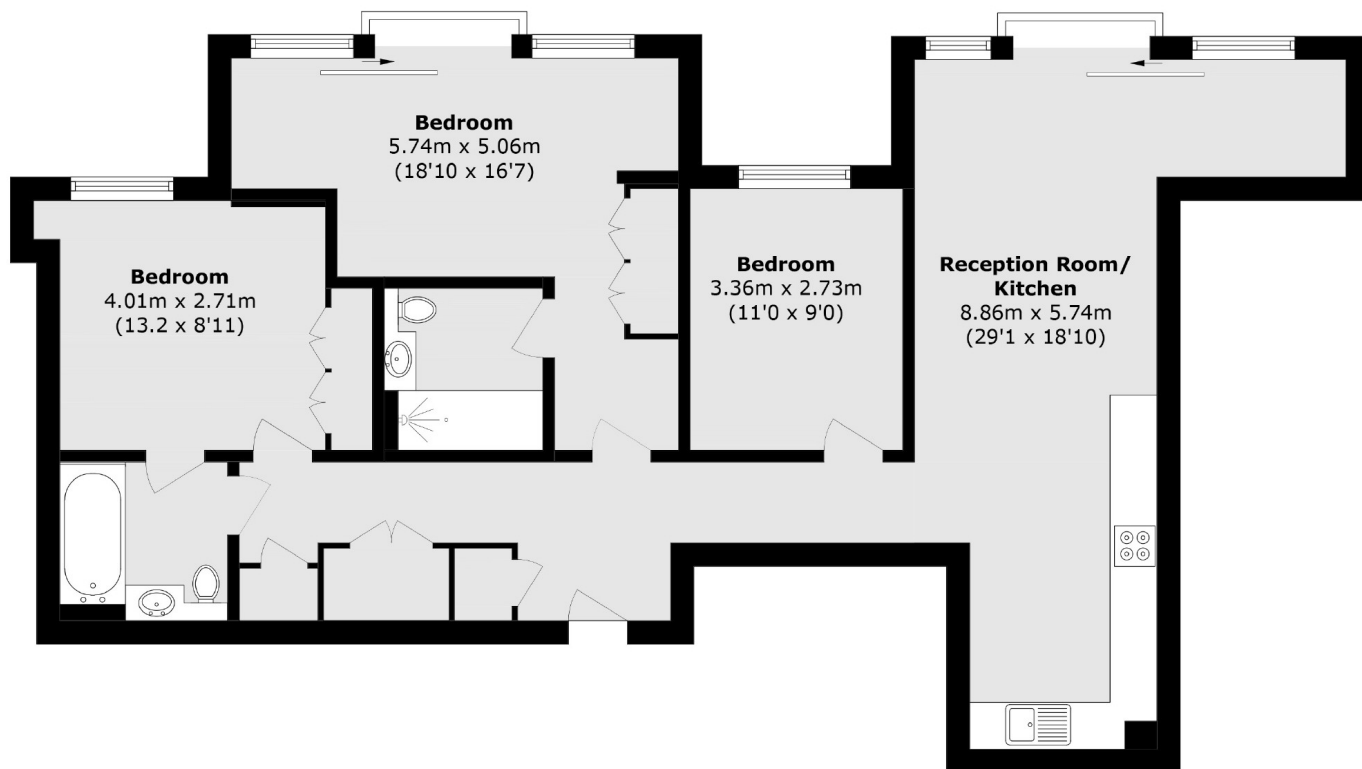
A three double bedroom apartment in a new luxury development, over 1,000sqft comprises an open plan living area with a modern kitchen and integrated appliances. All rooms have full height windows throughout, with great views of the City. Residents have access to excellent facilities including a lounge, gym, pool and a sauna.

Valencia Tower enjoys a prime location, less than half a mile from both Angel and Old Street Stations on the Northern Line. This strategic placement offers residents swift and convenient access to both the City and Central London. The tenancy is professionally managed by Dexters.

### Features

- Three Double Bedrooms
- Two Bathrooms
- 1038sqft / 95sqm
- 24hrs concierge
- Pool, Gym & Spa
- Comfort Cooling
- Resident's Lounge

# Bollinder Place, London, EC1V



Total area (approx.): 96.5 sq. m (1038.7 sq. ft)