



Lily Place, EC1N

£3,500 Per week

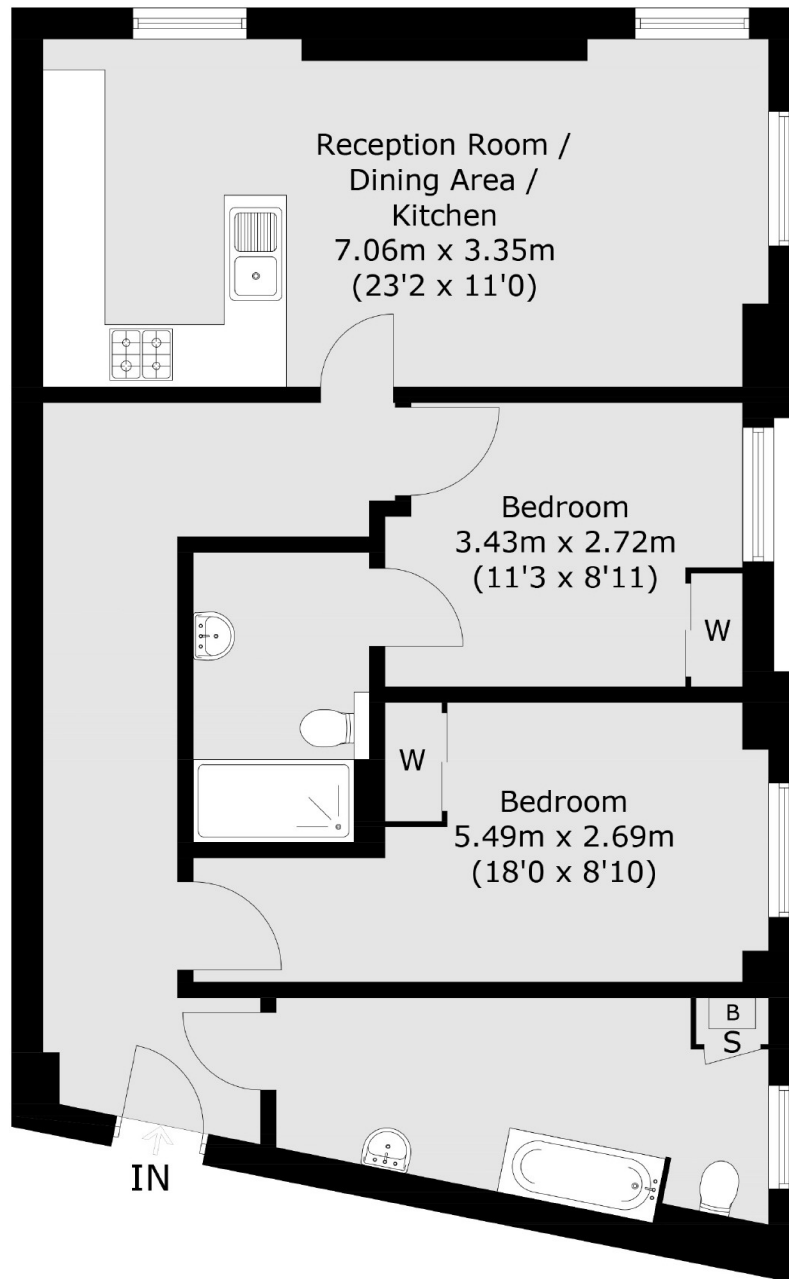
A newly refurbished two bedroom two bathroom flat Managed by Dexters. With limed-oak parquet flooring throughout, stylish 'art deco style' bathrooms and brand new 'industrial' style double glazed windows.

This impressive former warehouse conversion is quietly tucked away between Farringdon Road and Hatton Garden and enjoys excellent transport links and easy access to a wide variety of local shops, supermarkets and cafes.

Features

Managed by Dexters
Newly Renovated
Warehouse Conversion
Parquet Wood Flooring
Skylight/High Ceilings

Lily Place,
London, EC1N



First Floor

Total area (approx.): 75.7 sq. m (814 sq. ft)

Dexters

Clerkenwell
1b Britton St
London
EC1M 5NW
Lettings
020 7483 6370

Energy Rating: C. We aim to make our particulars both accurate and reliable. However they are not guaranteed; nor do they form part of an offer or contract. If you require clarification on any points then please contact us, especially if you're traveling some distance to view. Please note that appliances and heating systems have not been tested and therefore no warranties can be given as to their good working order.

 **RICS** | Regulated
Estate Agent
and Letting Agent

[dexters.co.uk](https://www.dexters.co.uk)