



West Smithfield, EC1A

£2,550 Per calendar month

A bright and well-presented one-bedroom apartment with a large private terrace, is situated in a charming period building in the heart of Clerkenwell, just moments from Farringdon Station.

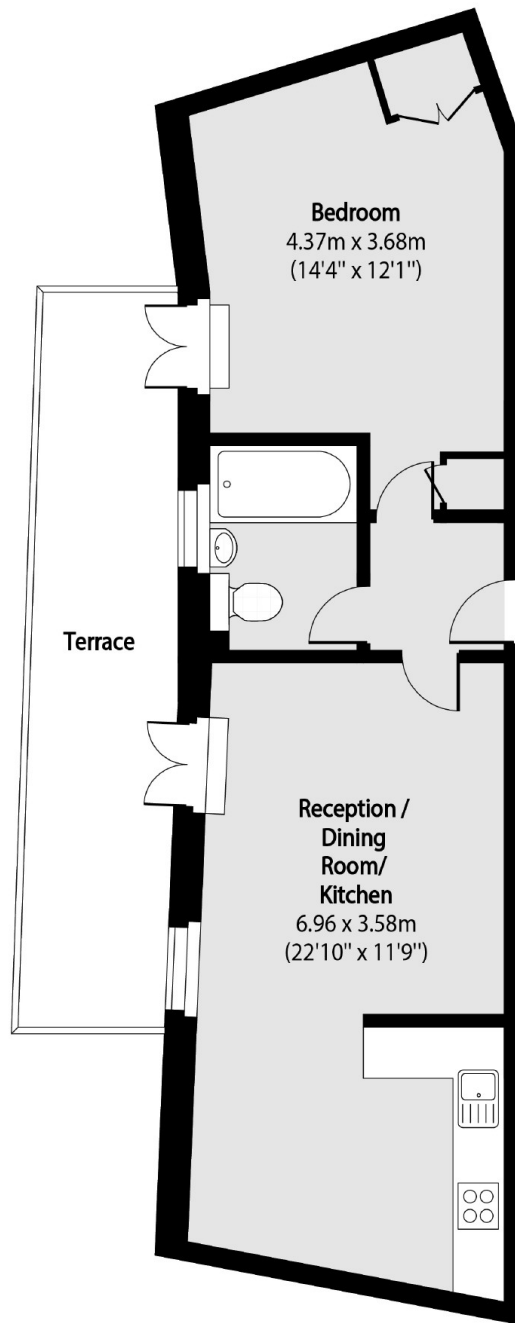
The property features a spacious open-plan living and dining area with excellent natural light and lots of storage. There is a modern fitted kitchen with ample storage, integrated appliances, and tiled flooring. The living area includes space for both relaxing and working from home, with large windows and French doors creating a light and airy feel.

The apartment is located on a quiet stretch of West Smithfield, close to the popular Smithfield Market and a wide range of local shops, cafés, and restaurants.

Features

- One Double Bedroom
- Large Private Terrace
- Great Location
- Lift Access
- Secure Entrance

West Smithfield,
London, EC1A



Total area (approx): 51.46 sq m (554 sq. ft)

Terrace total area (approx): 15.04 sq m (162 sq. ft)