



Bartholomew Close, EC1A

£3,100 Per week

This luxurious, bright & spacious one double bedroom apartment is on the third floor of the brand new and highly sought after Bart's Square development, close to Smithfield. Residents have access to a 24 hour concierge, cinema room & private bar.

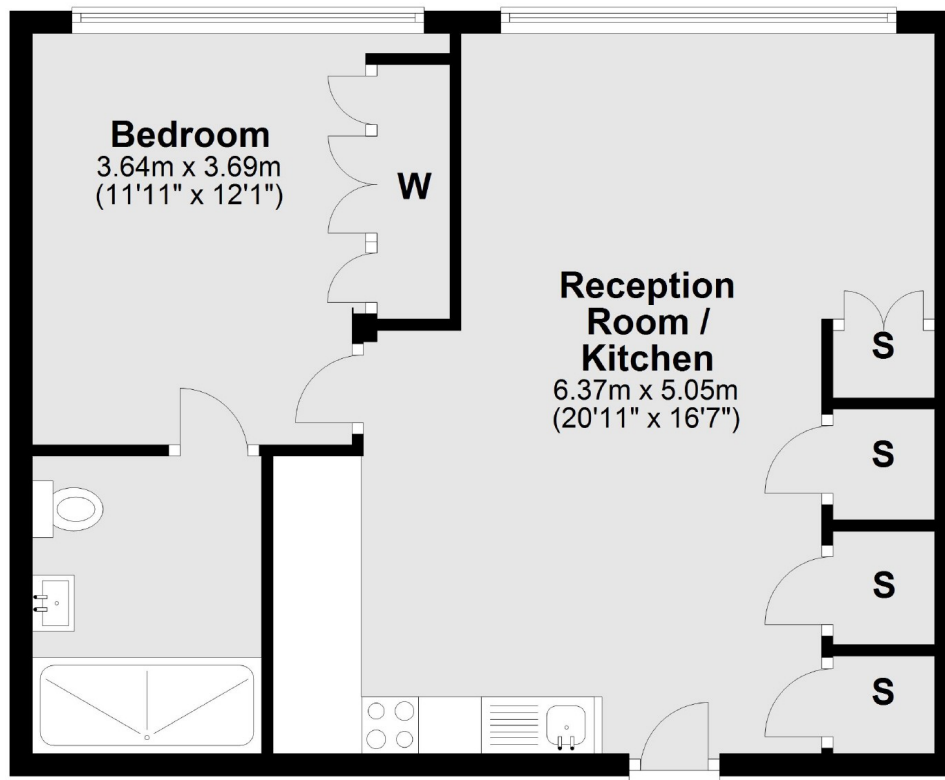
Bart's Square is one of the most prestigious and sought after developments in the area and is just a short walk from the the City with easy access to both Farringdon and St Paul's stations.

Features

- One Bedroom
- One Bathroom
- Wood Floors Throughout
- 24 Hour Concierge
- Resident Bar and Lounge
- Cinema Room

Bartholomew Close,
London, EC1A

Third Floor



Total area: approx. 50.8 sq. metres (547.2 sq. feet)