



Gray's Inn Road, WC1X

£3,400 Per calendar month

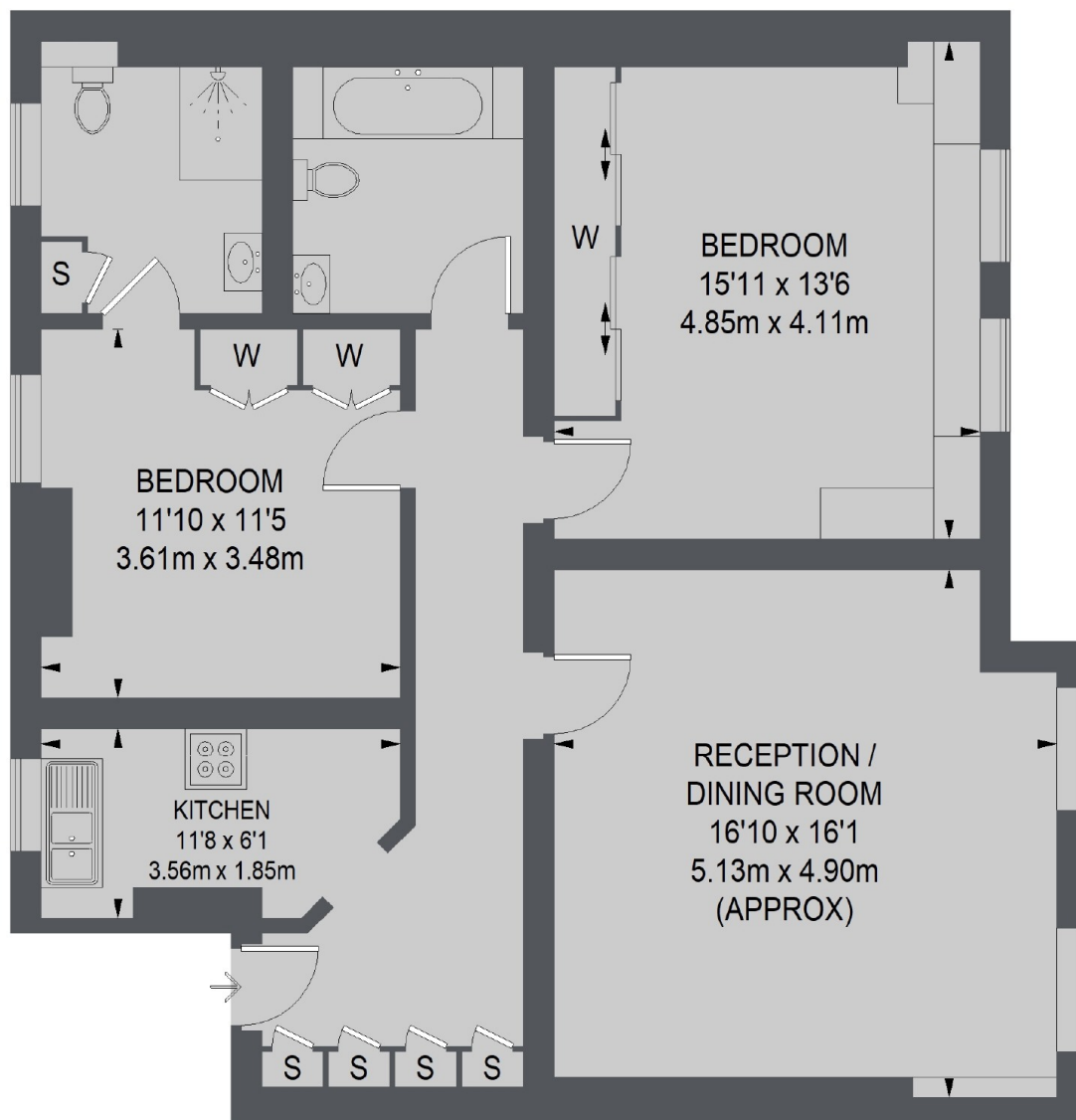
A two bedroom, two bathroom apartment measuring over 1000 sq/ft. Located in a period mansion block on Gray's Inn Road, the property features high ceilings, sash windows and plenty of built in storage.

Features

- Two Bedrooms
- Two Bathrooms
- High Ceilings
- Original Features
- Great Location
- Lift Access

Churston Mansions is a popular mansion block near Farringdon, Chancery Lane and Russell Square underground stations which are all about half a mile from the building.

Gray's Inn Road, London, WC1X



SIXTH FLOOR

TOTAL APPROX. FLOOR AREA
1009 SQ. FT. (93.77 SQ. M.)

Dexters

Clerkenwell
1b Britton St
London
EC1M 5NW
Lettings
020 7483 6370

Energy Rating: C. We aim to make our particulars both accurate and reliable. However they are not guaranteed; nor do they form part of an offer or contract. If you require clarification on any points then please contact us, especially if you're traveling some distance to view. Please note that appliances and heating systems have not been tested and therefore no warranties can be given as to their good working order.

 **RICS** | Regulated
Estate Agent
and Letting Agent

dexters.co.uk