



Bridgewater Square, EC2Y

£485 Per week

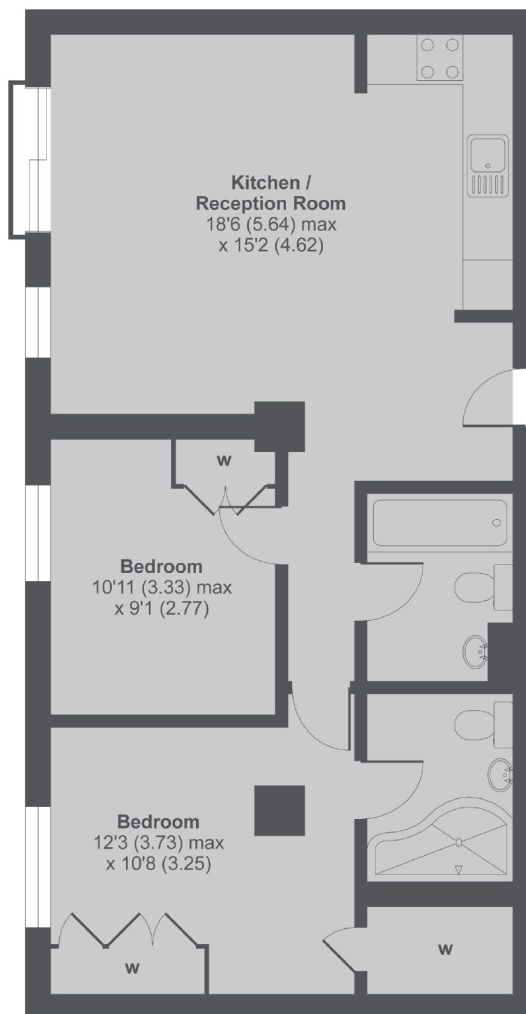
A two double bedroom, two bathroom apartment in the popular Cobalt Building. Wood floors give the property a spacious feel, whilst the open plan living area has lots of natural light. Perfect property for professionals.

The Cobalt Building is located on Bridgewater Square and is just over 350 yards from Barbican Underground station.

Features

- Daytime Porter
- Prime Location
- Great Size
- Perfect for Sharers
- Wood Floors
- Great Transport Links

Bridgewater Square, London, EC2Y



1st Floor

The Cobalt Building EC2Y

MAIN HOUSE APPROX FLOOR AREA 710 SQ.FT 65.9 SQ.M

Copyright nichecom.co.uk 2017 Produced for Dexters REF : 194004

Contact

To arrange a viewing call our office on the number below or visit our website.



Energy Rating: C. We aim to make our particulars both accurate and reliable. However they are not guaranteed; nor do they form part of an offer or contract. If you require clarification on any points then please contact us, especially if you're traveling some distance to view. Please note that appliances and heating systems have not been tested and therefore no warranties can be given as to their good working order.