



## Mount Pleasant, WC1X

£5,750 Per calendar month

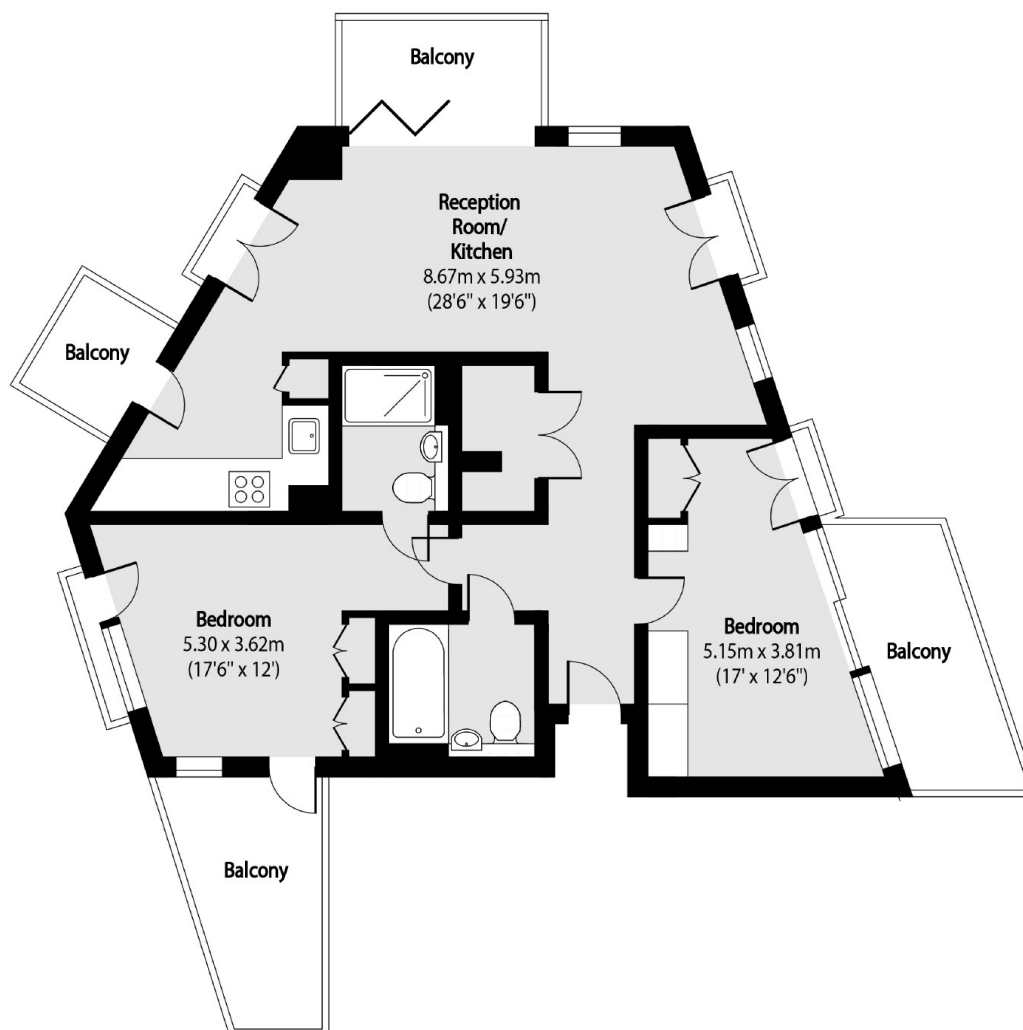
A modern top-floor apartment offers two double bedrooms, two bathrooms, and a bright open-plan living area with comfort cooling throughout. Four private balconies with uninterrupted city skyline views perfect for relaxing or entertaining. Located in a new-build complex, residents also enjoy access to communal gardens, a residents' lounge, and a private leisure centre with a gym, swimming pool, sauna, and treatment rooms.

Postmark couldn't be better connected, with the whole of central London on your doorstep and four major underground stations including Farringdon, Chancery Lane, Russell Square & Kings Cross within a 15-minute walk taking you to the rest of the city and beyond.

### Features

- Two Double Bedrooms
- Four Private Balconies
- Two Bathrooms
- 24 Hr Concierge
- Wellness Centre + Gym
- Residents Gym
- Cinema Room

# Mount Pleasant, London, WC1X



Total area (approx): 83.50 sq m (899 sq. ft)

Balcony total area (approx): 22.62 sq m (243sq. ft)

## Dexters

Clerkenwell  
1b Britton St  
London  
EC1M 5NW

Lettings  
020 7483 6370

Energy Rating: . We aim to make our particulars both accurate and reliable. However they are not guaranteed; nor do they form part of an offer or contract. If you require clarification on any points then please contact us, especially if you're traveling some distance to view. Please note that appliances and heating systems have not been tested and therefore no warranties can be given as to their good working order.

 **RICS** | Regulated  
Estate Agent  
and Letting Agent

[dexters.co.uk](https://www.dexters.co.uk)