



Lewis Cubitt Walk, N1C

£6,000 Per calendar month

Dexters



Lewis Cubitt Walk, N1C

Discover the epitome of modern city living in this stunning 2-bedroom apartment on the third floor of cadence court, a prestigious new-build development in the heart of King's Cross. This beautifully furnished apartment features a spacious open-plan living area with centralised flat control, ensuring seamless convenience. The master bedroom boasts an en-suite bathroom, while a second bathroom with a bathtub provides additional comfort.

One of the standout features is the expansive private terrace, offering breathtaking views and an elegant outdoor dining area with a stylish table and lush greenery - perfect for entertaining guests. Additionally, residents have access to a spectacular communal roof terrace, complete with ambient nighttime lighting.

Cadence Court offers an array of premium amenities, including a state-of-the-art gym, residents' lounge, and a 24-hour concierge service. Situated in an enviable location, the building is surrounded by vibrant restaurants, boutique shops, and exciting activities, all just moments from your doorstep.

Features

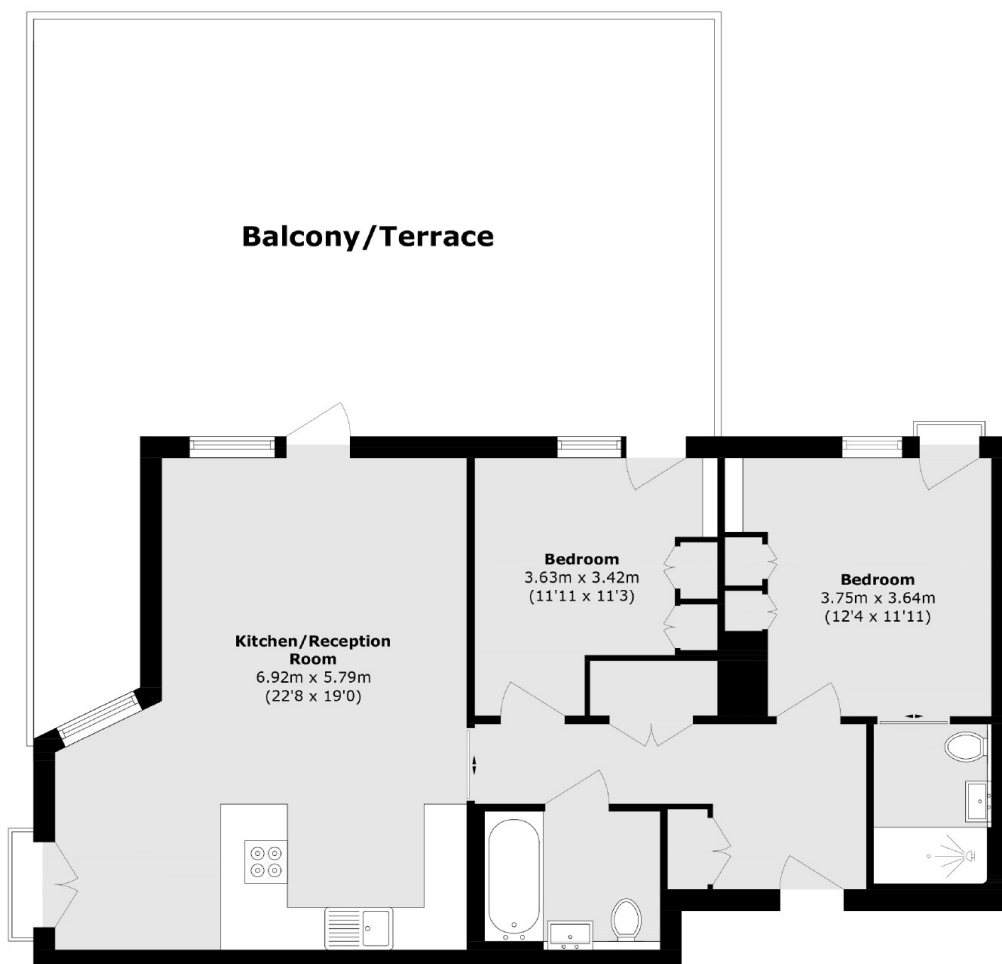
- Prime Location
- Luxury Amenities
- Spacious Private Terrace
- Modern Furnishings
- New Build Development
- Centralised Flat Control







Lewis Cubitt Walk, London, N1C



Total area (approx.): 81.3 sq. m (875.1 sq. ft)

Balcony/Terrace area (approx.): 62.0 sq. m (667.3 sq. ft)