



Hatton Place, EC1N

£3,500 Per calendar month

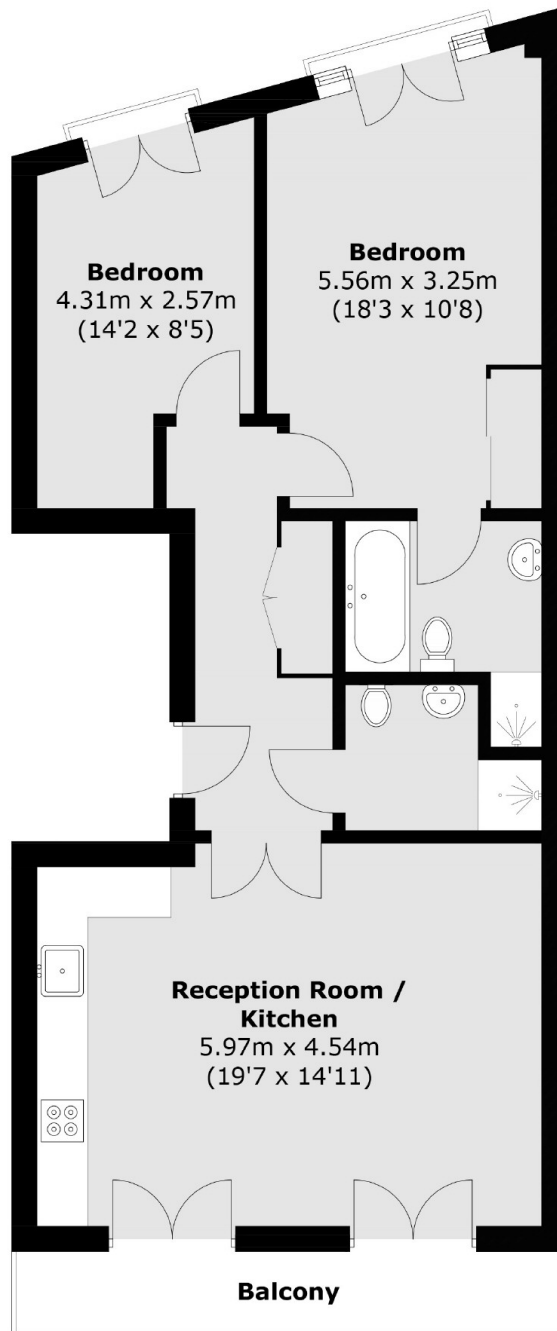
The property offers two spacious double bedrooms, including a principal bedroom with an en-suite shower room, and a large open-plan living area and a private west-facing terrace provides a sunny outdoor space. Within a sought after location, centrally located in the heart of Hatton Garden just moments from Farringdon Station and close to Chancery Lane.

Within a sought after location, centrally located in the heart of Hatton Garden, one of London's most vibrant and historic districts, just moments from Farringdon Station (Elizabeth Line) and close to Chancery Lane.

Features

- Two Double Bedroom
- Two Bathrooms
- Private Terrace
- Mews Street
- Close to transport
- Juliet Balconies

Hatton Place, London, EC1N



Total area (approx.): 72.2 sq. m (777.2 sq. ft)
Balcony: 6.1 sq. m (65.7 sq. ft)

Dexters

Clerkenwell
1b Britton St
London
EC1M 5NW

Lettings
020 7483 6370

Energy Rating: . We aim to make our particulars both accurate and reliable. However they are not guaranteed; nor do they form part of an offer or contract. If you require clarification on any points then please contact us, especially if you're traveling some distance to view. Please note that appliances and heating systems have not been tested and therefore no warranties can be given as to their good working order.

 **RICS** | Regulated
Estate Agent
and Letting Agent

[dexters.co.uk](https://www.dexters.co.uk)