



## Ludgate Hill, EC4M

£3,800 Per week

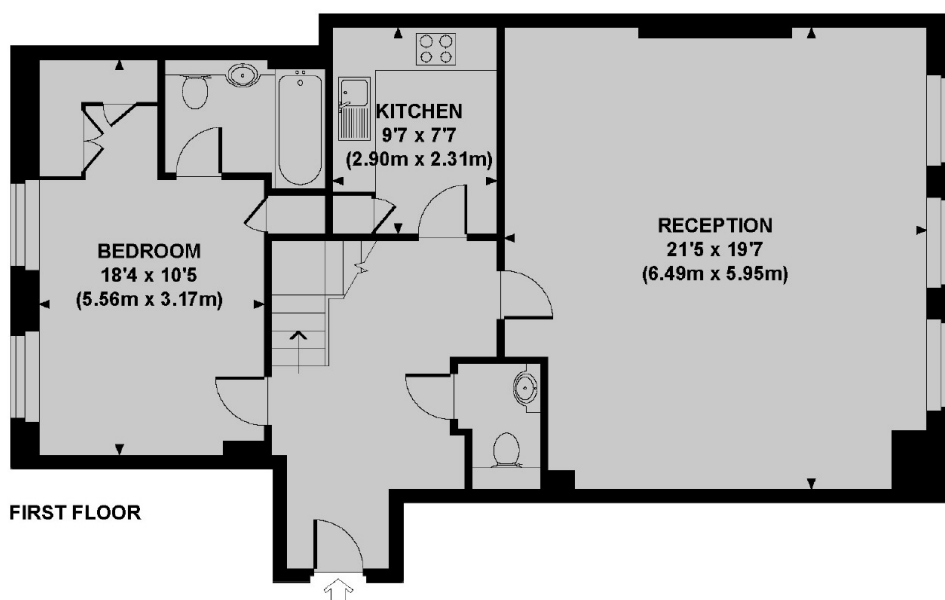
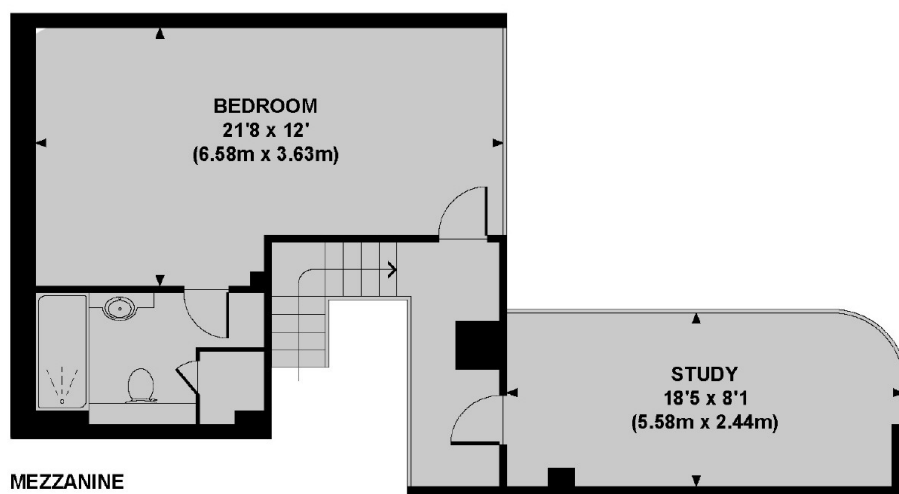
This is a three bedroom split level period conversion in the City with three bathrooms. The property is located next to St. Pauls Cathedral. The shops, bars and restaurants of Paternoster Square and One New Change are on the doorstep.

The Gallery is located on Ludgate Hill. The closest station is City Thameslink, and St Paul's and Blackfriars both about a quarter mile away for underground and mainline access.

### Features

- 1338 Sq/Ft
- Three Double Bedrooms
- Three Bath
- Mezzanine Level
- Great Transport Links
- Close To Shops And Bars

# Ludgate Hill, London, EC4M



Approx. gross internal area  
1338 Sq Ft. / 124.3 Sq M.

## Dexters

Clerkenwell  
1b Britton St  
London  
EC1M 5NW  
Lettings  
020 7483 6370

Energy Rating: E. We aim to make our particulars both accurate and reliable. However they are not guaranteed; nor do they form part of an offer or contract. If you require clarification on any points then please contact us, especially if you're traveling some distance to view. Please note that appliances and heating systems have not been tested and therefore no warranties can be given as to their good working order.

 **RICS** | Regulated  
Estate Agent  
and Letting Agent

[dexters.co.uk](https://www.dexters.co.uk)