

Central Street, EC1V

£3,500 Per calendar month

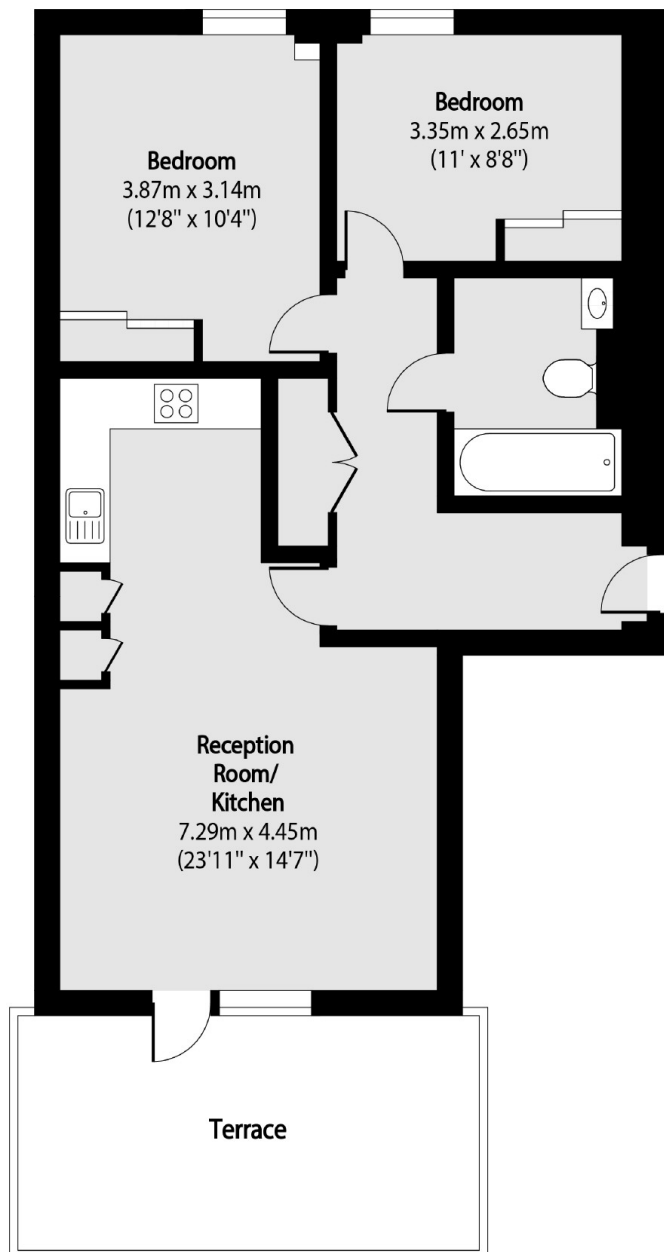
Modern two double bedroom apartment with a private south-facing terrace. Includes access to a communal rooftop terrace and concierge. Bright and airy with floor-to-ceiling windows and underfloor heating throughout.

Worcester Point is located on Central Street, about a half mile to Barbican and Farringdon stations, and about three quarters of a mile to Angel and Old Street stations.

Features

- Two Bedrooms
- Large Private Terrace
- Concierge
- Furnished
- Communal Roof Terrace

Central Street, London, EC1V



Total area (approx): 67.19 sq m (723 sq. ft)

Terrace total area (approx): 15.40 sq m (166 sq. ft)

Dexters

Clerkenwell
1b Britton St
London
EC1M 5NW

Lettings
020 7483 6370

Energy Rating: . We aim to make our particulars both accurate and reliable. However they are not guaranteed; nor do they form part of an offer or contract. If you require clarification on any points then please contact us, especially if you're traveling some distance to view. Please note that appliances and heating systems have not been tested and therefore no warranties can be given as to their good working order.

 **RICS** | Regulated
Estate Agent
and Letting Agent

[dexters.co.uk](https://www.dexters.co.uk)