



Wharton Street, WC1X

£475 Per week

A smart one bedroom garden flat ideally located on a desirable tree lined street in Finsbury. The property is within a beautiful Georgian conversion and has its own private entrance, wood flooring and a lovely private garden.*VIDEO VIEWING AVAILABLE

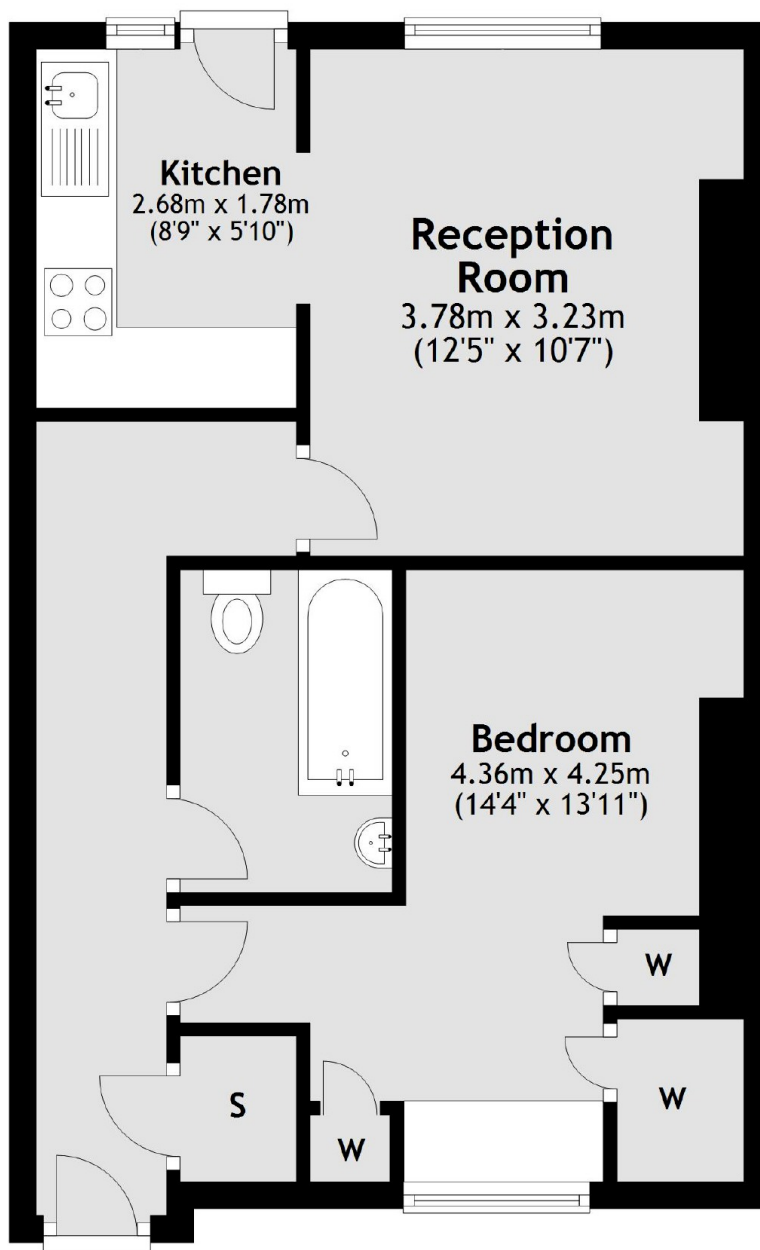
Wharton Street is well connected via Angel, King's Cross and Farringdon Stations. The popular Exmouth Market with its wide range of bars and eateries is also just moments away.

Features

- Managed by Dexters
- Fantastic Private Garden
- Wood Floors
- Private Entrance
- Good Storage
- Modern Bathroom

**Wharton Street,
London, WC1X**

Lower Ground Floor



Total area: approx. 44.9 sq. metres (483.5 sq. feet)