



Jubilee Walk, WC1X

£4,000 Per calendar month

**Dexters**



## Jubilee Walk, WC1X

A south facing apartment with stunning views of the City. The apartment has an open-plan kitchen and reception area, double bedrooms, and two luxury bathroom suites. Residents' facilities include a cinema, rooftop gardens, gym and a private dining room.

In one of the worlds most important financial hubs, the Postmark stands out for all the right reasons. From the carefully chosen interiors designed to feel like an intimate members club to the private balconies and terraces. The Postmark invites relaxation, offers entertainment and welcomes guests.

The property is well connected for the amenities of King's Cross, Farringdon and Russell Square and it is uniquely placed for easy access into the City and the West End.

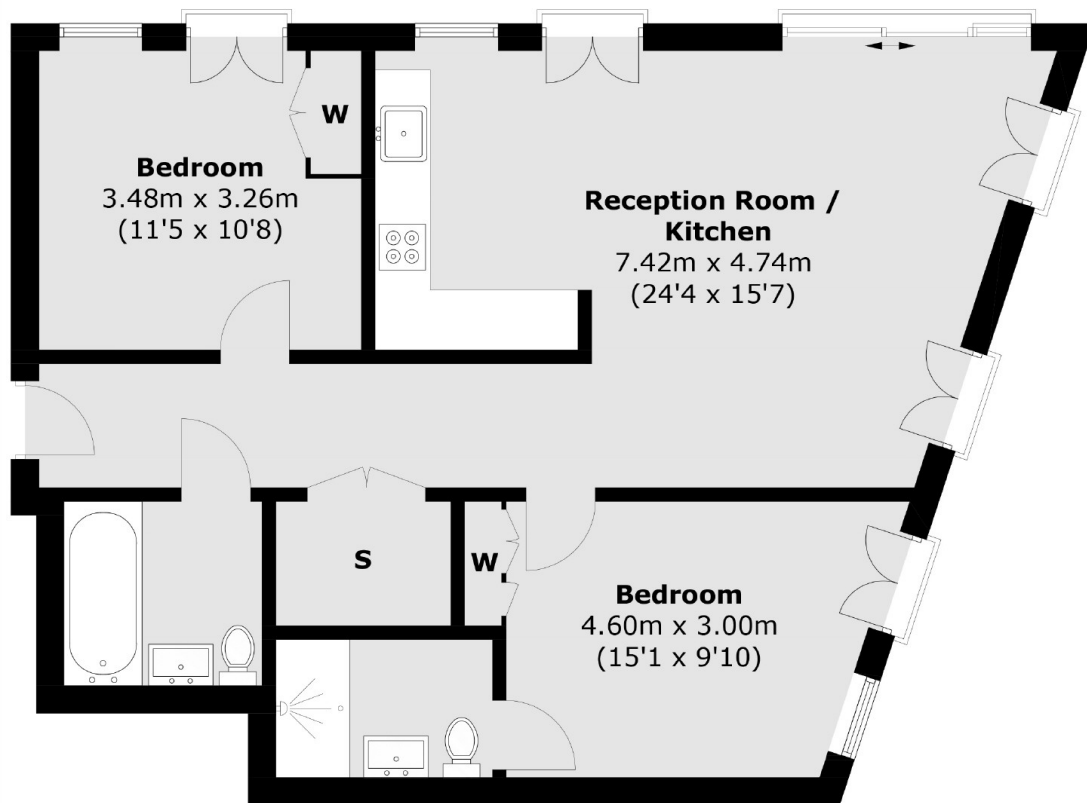
### Features

Two Bedrooms  
Gym, Swimming Pool, Spa

Cinema, Bar and Lounge  
Communal Gardens/Terraces



Jubilee Walk,  
London, WC1X



### Seventh Floor

Total area (approx.): 75.6 sq. m (813.7 sq. ft)

**Dexters**

Clerkenwell  
1b Britton St  
London  
EC1M 5NW  
Lettings  
020 7483 6370

Energy Rating: B. We aim to make our particulars both accurate and reliable. However they are not guaranteed; nor do they form part of an offer or contract. If you require clarification on any points then please contact us, especially if you're traveling some distance to view. Please note that appliances and heating systems have not been tested and therefore no warranties can be given as to their good working order.

 **RICS** | Regulated  
Estate Agent  
and Letting Agent

[dexters.co.uk](http://dexters.co.uk)