



## Bollinder Place, EC1V

£3,999 Per calendar month

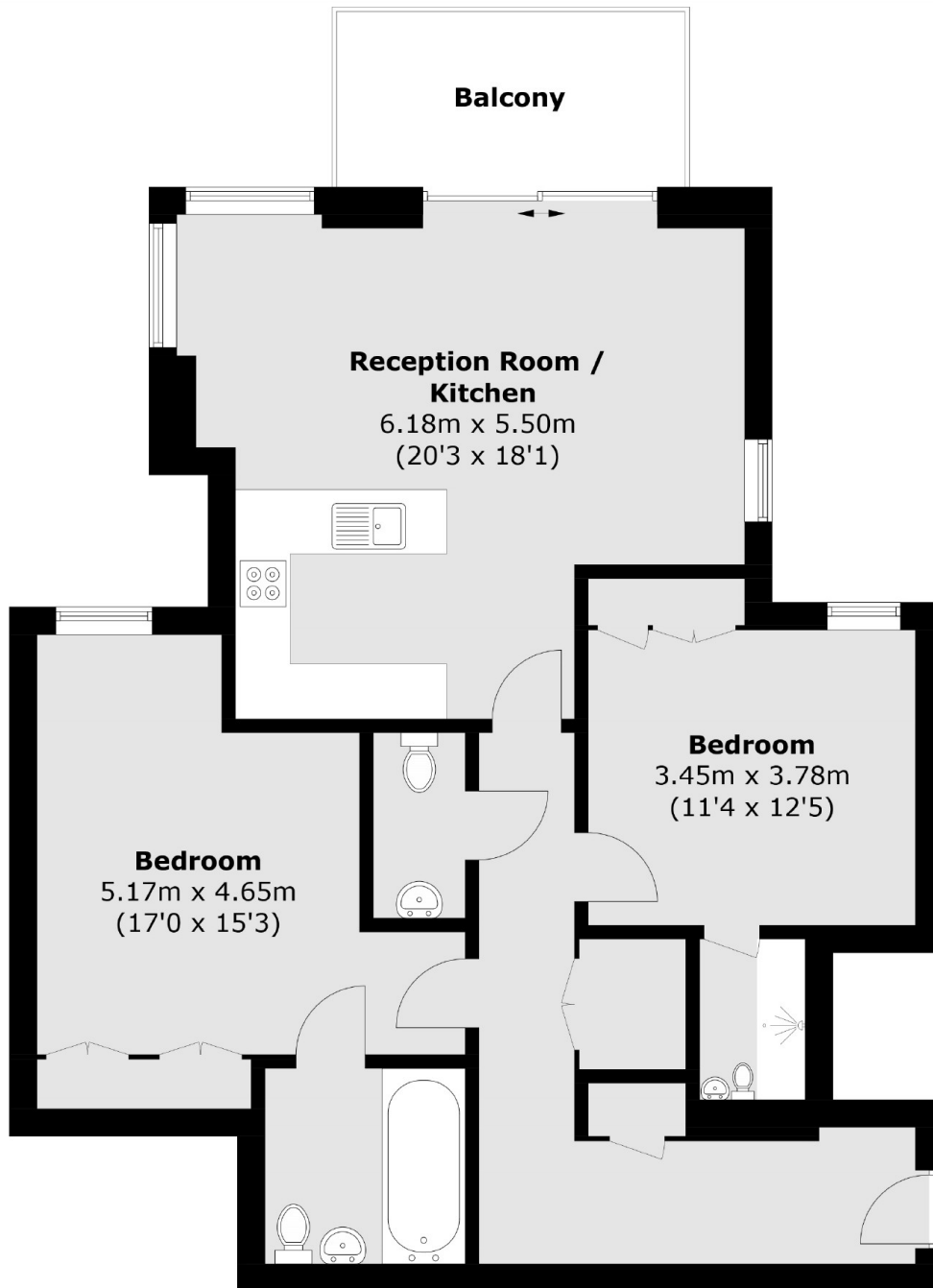
This luxury apartment is the latest release of the 250 City Road development. It features an expansive open-plan living area seamlessly integrated with a modern kitchen suite, complete with high-end appliances and access to a large balcony. Throughout the apartment, full-height windows and residents can enjoy access to a wealth of top-notch amenities, including a stylish lounge, gym, pool and spa.

Bollinder Place enjoys a prime location and offers residents swift and convenient access to both the City and Central London. The tenancy is professionally managed by Dexters.

### Features

- 24 Hour Concierge
- Pool, Gym & Spa
- Comfort Cooling
- Private Balcony
- Communal Gardens
- Managed by Dexters

Bollinder Place,  
London, EC1V



Total area (approx.): 86.2 sq. m (927.8 sq. ft)  
Balcony: 7.2 sq. m (77.5 sq. ft)