



## Dallington Square, EC1V

£4,000 Per week

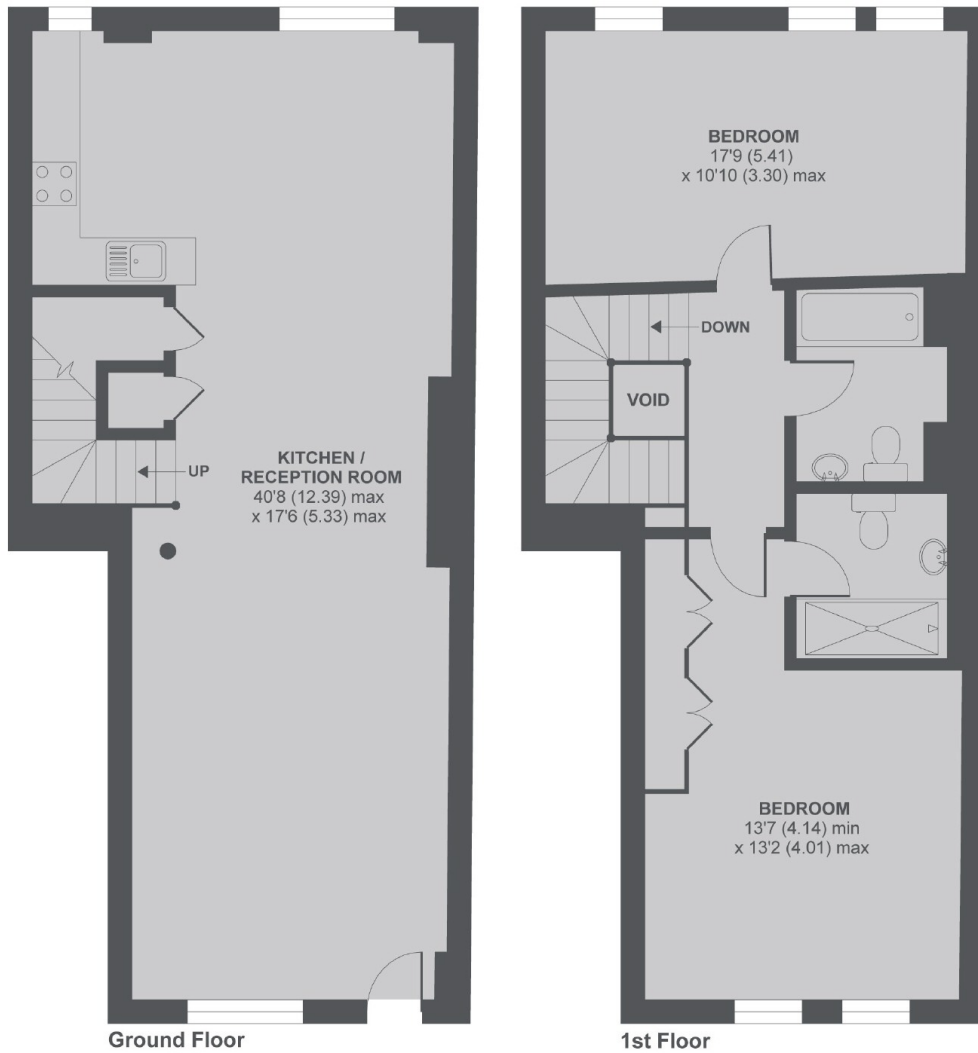
Set on the site that was originally the stables and storehouse for the iconic Cannon Brewery, this exceptionally spacious industrial style duplex benefits from a private decked garden, high ceilings, big windows and exposed brickwork. Managed by Dexters

In the heart of Clerkenwell, there are ample amenities in the vicinity with two supermarkets, restaurants and bars. It is well connected to the City and the West End With Farringdon, Angel and Old Street Stations readily accessible.

### Features

- Stables Conversion
- Private Gated Development
- Double Height Ceilings
- Exposed Brickwork
- Decked Garden
- Managed by Dexters

# Dallington Square, London, EC1V



## Dallington Square EC1

MAIN HOUSE APPROX FLOOR AREA 1228 SQ.FT 114 SQ.M (EXCLUDES VOID)

Copyright nichecom.co.uk 2017 REF : 212945

**Dexters**

Clerkenwell  
1b Britton St  
London  
EC1M 5NW  
Lettings  
020 7483 6370

Energy Rating: D. We aim to make our particulars both accurate and reliable. However they are not guaranteed; nor do they form part of an offer or contract. If you require clarification on any points then please contact us, especially if you're traveling some distance to view. Please note that appliances and heating systems have not been tested and therefore no warranties can be given as to their good working order.

 **RICS** | Regulated  
Estate Agent  
and Letting Agent

[dexters.co.uk](http://dexters.co.uk)