



## Lewis Cubitt Walk, N1C

£7,500 Per calendar month

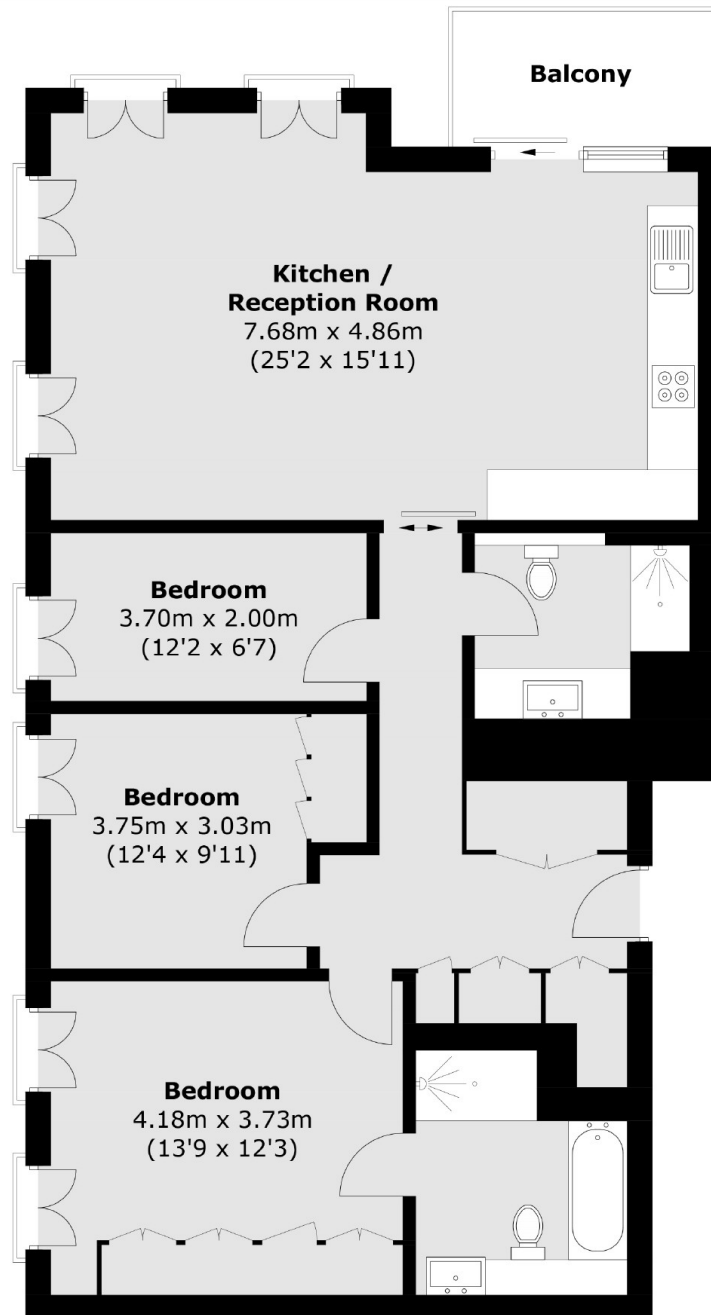
A stunning three bedroom two bathroom apartment in one of Coal Drops Yards most popular developments. The property has underfloor heating and comfort cooling throughout with a spacious kitchen/diner that has direct access to the west facing balcony. There is also an abundance of storage with integrated wardrobes in the hallway and principle bedroom.

Lewis Cubitt Park is just a short walk from Kings Cross/ St Pancras station providing convenient access for Eurostar to Paris and Europe. It is next to Coal Drops Yard retail quarter with a vast amount of new shops, restaurants and facilities.

### Features

- Daytime Concierge
- Communal Roof Garden
- Balcony
- New Build
- Underfloor Heating
- Comfort Cooling

Lewis Cubitt Walk,  
London, N1C



Total area (approx.): 100.9 sq. m (1,086.1 sq. ft)  
Balcony: 5.1 sq. m (54.9 sq. ft)