

Jubilee Walk, WC1X

£5,200 Per calendar month

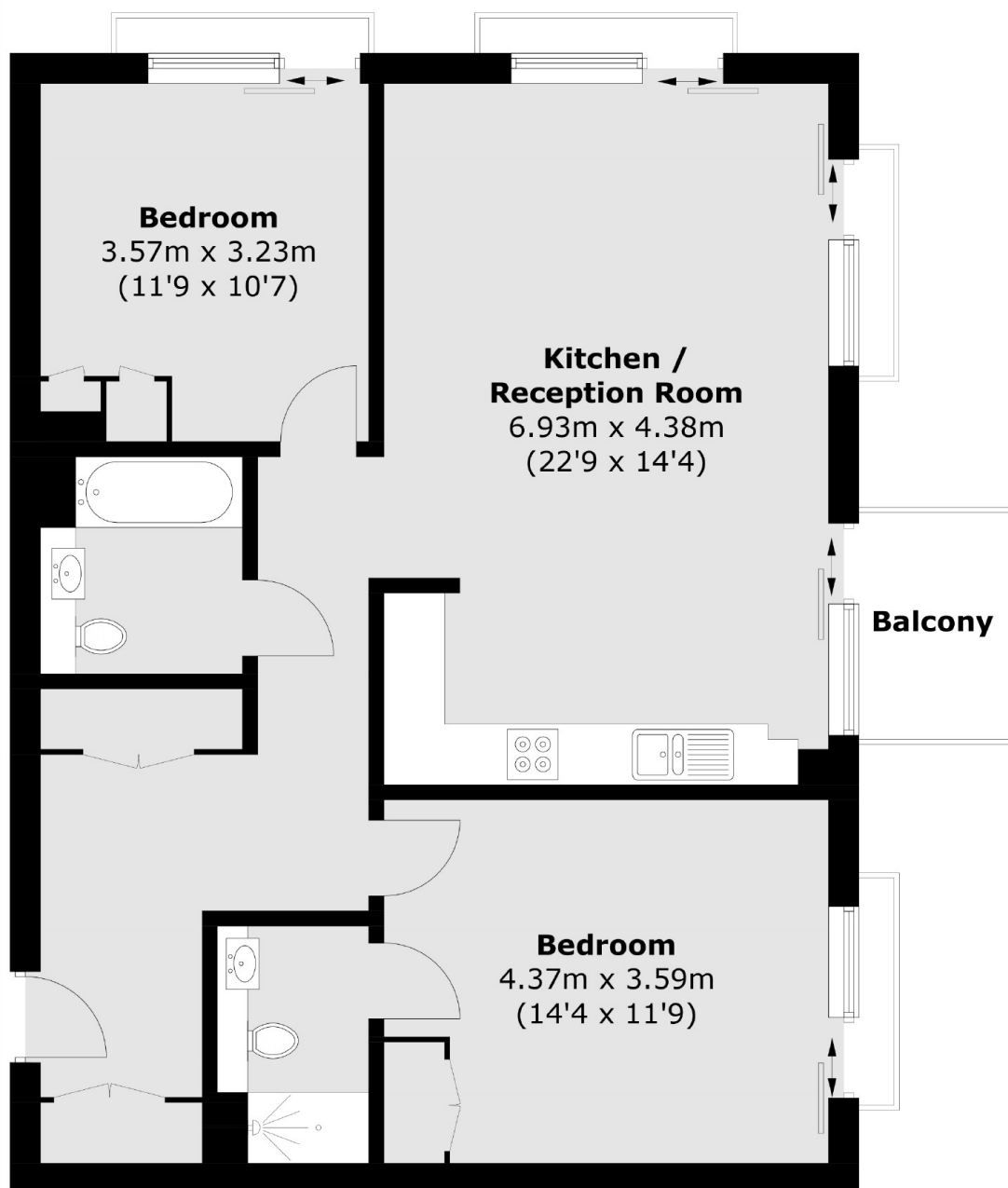
A stunning two bedroom apartment with four balconies, art-deco inspired bathrooms, kitchen and comfort cooling. The corner aspect of the apartment invites plenty of natural light and stunning views of the City's skyline. Residents' facilities include a pool, spa, cinema, rooftop gardens, gym and a function room.

The property is well connected for the amenities of King's Cross, Farringdon and Russell Square and it is uniquely placed for easy access into the City and the West End.

Features

- Comfort Cooling
- Four Balconies
- Residents' Bar & Lounge
- Cinema Room & Gym
- Communal Gardens
- Terraces
- Concierge
- Managed by Dexters

Jubilee Walk, London, WC1X



Fifth Floor

Total area (approx.): 84.2 sq. m (906.3 sq. ft)
Balcony area : 6.8 sq. m (73.1 sq. ft)