



Barbican, EC2Y

£2,999 Per calendar month

Split level one bed with a separate dining room apartment within the iconic Barbican complex for let.

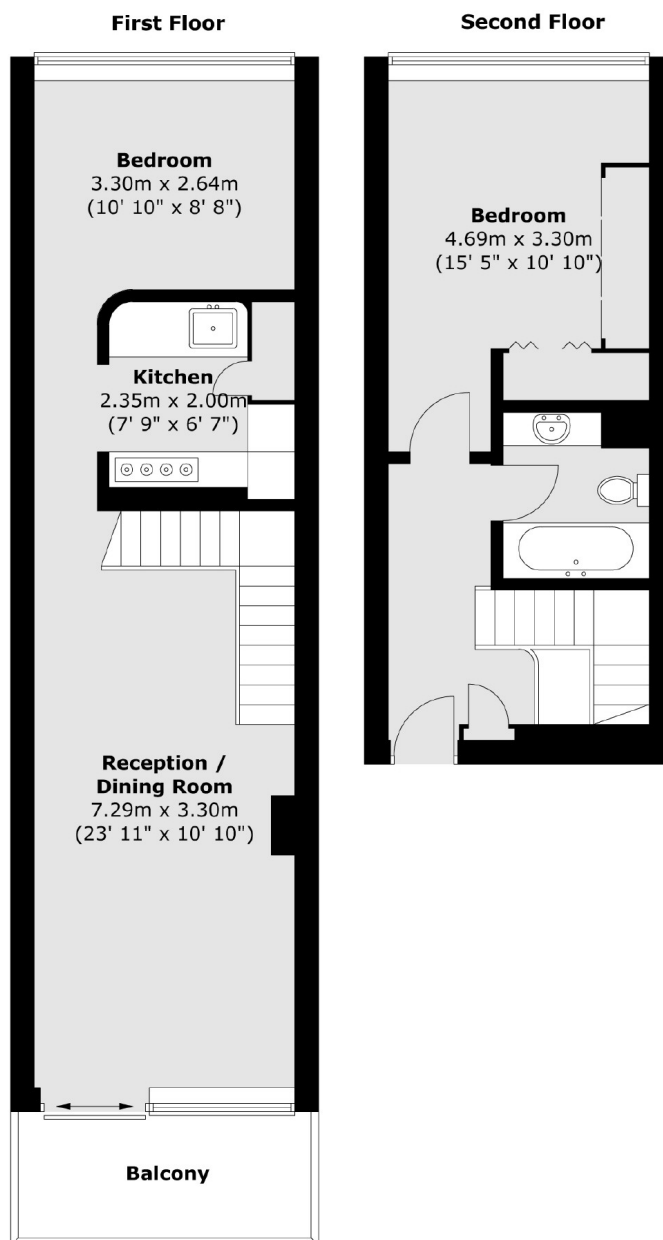
Through the second floor entrance, the upper level comprises entrance hall, original Barbican bathroom in excellent condition and generous bedroom with ample built in storage. An open staircase leads down to a double reception lounge area and separate dining area room with access to a large south facing balcony and semi open plan, mostly original Barbican kitchen.

Safe and quiet, the Barbican offers many amenities including the world famous Barbican Centre with its Galleries and theatres, large communal gardens, porter service, cafés and convenience stores.

Features

- Separate Dining Room
- Duplex Apartment
- Large Balcony
- Barbican Facilities
- Grade II Listed

Barbican, London, EC2Y



Total area (approx.) : 69.7 sq. m (750 sq. ft)
Total balcony area (approx.) : 5.9 sq. m (63 sq. ft)