



## Gray's Inn Road, WC1X

£3,466 Per calendar month

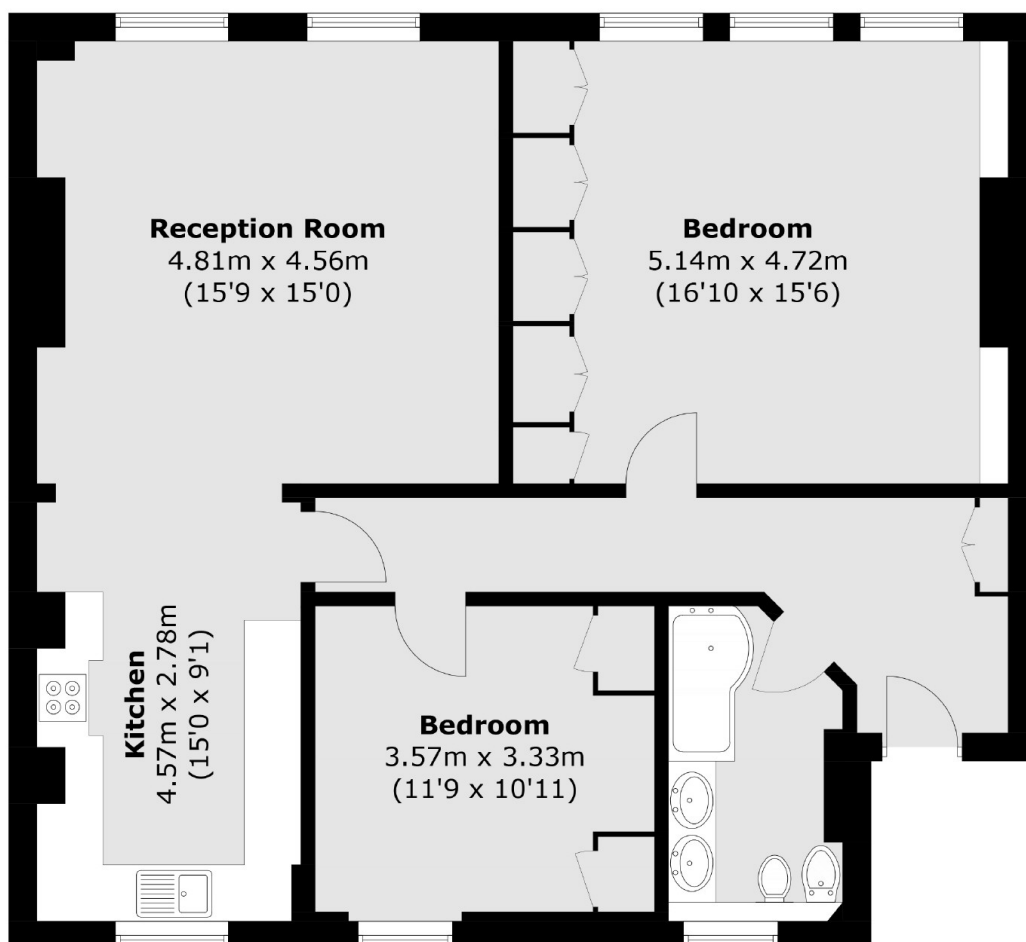
A very large, two bedroom property located within close proximity to excellent transport, amenities and world renowned universities. There is a semi open-plan living room/kitchen with built in appliances, two double bedrooms with fitted storage and a family bathroom.

It is very well located on Gray's Inn Road with excellent access to Bloomsbury and Covent Garden as well as Chancery Lane, Farringdon (Overground and Elizabeth Line) and King's Cross stations.

### Features

- Two Double Bedrooms
- 1000 Sq Ft
- Edwardian Mansion block
- Lift Access
- Excellent Transport
- High Ceilings

# Gray's Inn Road, London, WC1X



Total area (approx.): 92.9 sq. m (1,000.0 sq. ft)