



## Bollinder Place, EC1V

£4,300 Per calendar month

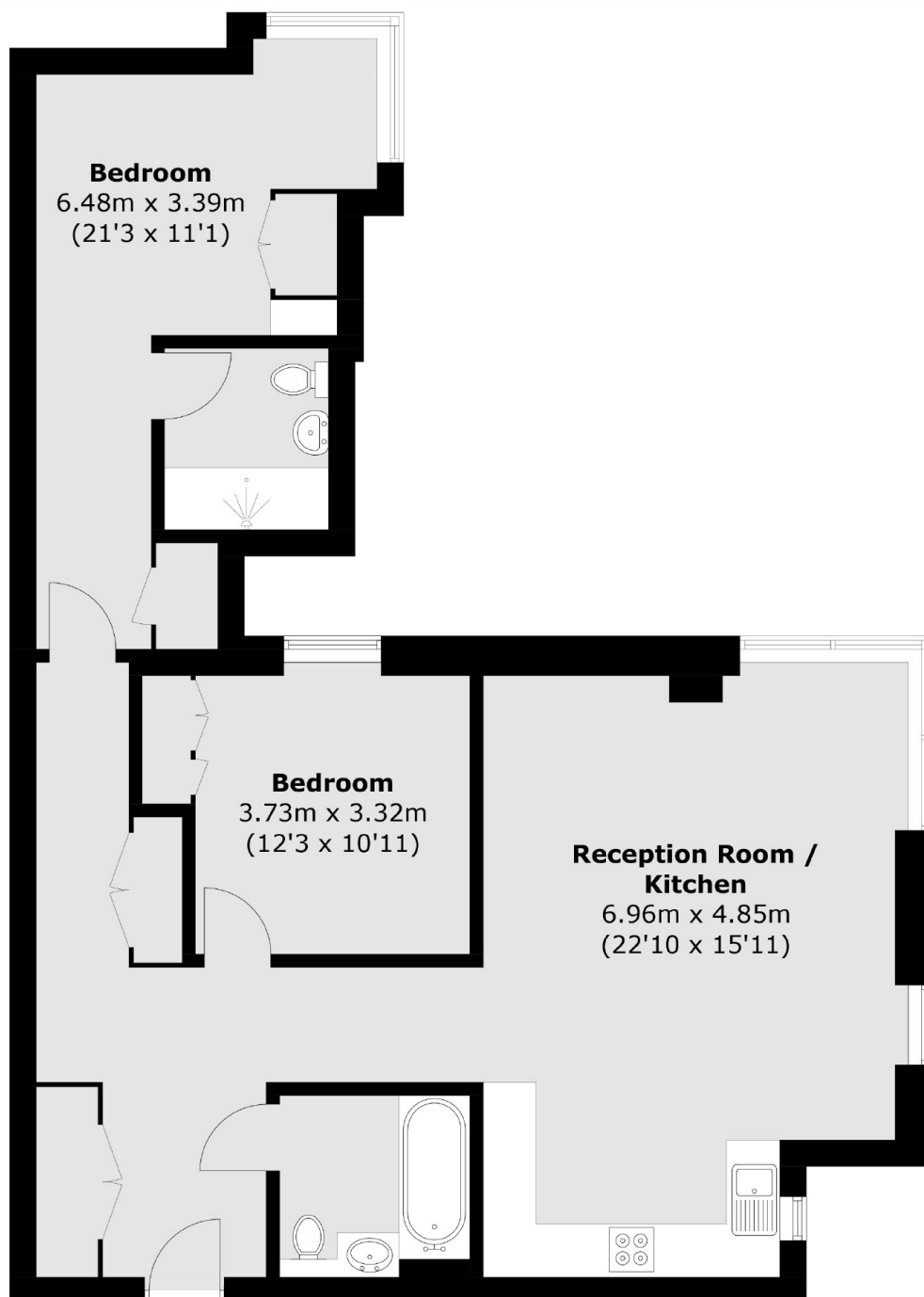
A luxury apartment, spanning just under 1000 square feet, is the latest iconic tower of the 250 City Road development. Available furnished or unfurnished (subject to offer). It features an expansive open-plan living area seamlessly integrated with a modern kitchen suite, complete with high-end appliances. Throughout the apartment, full-height windows offer breathtaking views of the City and residents can enjoy access to a wealth of top-notch amenities, including a stylish lounge, gym, pool and spa.

Valencia Tower enjoys a prime location and offers residents swift and convenient access to both the City and Central London.

### Features

- Furnished / Unfurnished
- 24 Hour Concierge
- Pool, Gym & Spa
- Comfort Cooling
- Resident's Lounge
- Communal Gardens

# Bollinder Place, London, EC1V



Total area (approx.): 87.8 sq. m (945.1 sq. ft)