



## Warwick Lane, EC4M

£3,550 Per calendar month

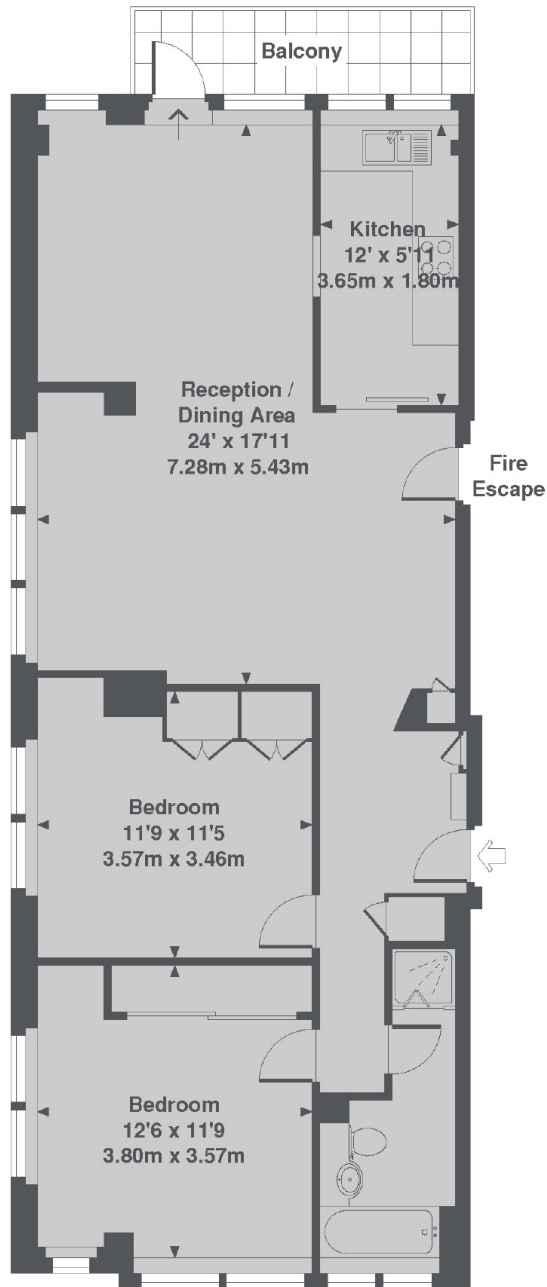
A modern apartment in the heart of the City offering plenty of natural light, two double bedrooms, solid flooring and a spacious balcony.

Blackfriars, St Pauls and City Thameslink stations are all within walking distance offering excellent underground and national rail links. Whilst a variety of shops, supermarkets and restaurants can be found at One New Change

### Features

- Two Double Bedrooms
- Private Balcony
- Excellent Transport Links
- Furnished
- Perfect Location
- Porter

Warwick Lane,  
London, EC4M



Amen Lodge, Warwick Lane, EC4M  
Total Approx. Floor area 867 Sq. Ft. (80.5 Sq. M.)